



U.S. Department
of Homeland Security
**United States
Coast Guard**

LOCAL NOTICE TO MARINERS

District: 11

Week: 16/24

CORRESPONDENCE TO:
COMMANDER
DISTRICT ELEVEN (DPW)
COAST GUARD ISLAND BUILDING 50-2
ALAMEDA, CA 94501-5100

REFERENCES: COMDTPUB P16502.6, Light List Volume VI, 2017 Edition, U.S. Chart No.1 12th Edition, and Coast Pilot Volume 7 49th Edition. These publications, along with corrections, are available at: <https://nauticalcharts.noaa.gov/>

BROADCAST NOTICE TO MARINERS - Information concerning aids to navigation and waterway management promulgated through BNM HB-0004-24, SF-0064-24, LA-0073-24, and SD-0027-24 have been incorporated in this notice, or will continue if still significant.

SECTION I - SPECIAL NOTICES

This section contains information of special concern to the Mariner.

SUBMITTING INFORMATION FOR PUBLICATION IN THE LOCAL NOTICE TO MARINERS

A complete set of guidelines with examples and contact information can be found at <http://www.pacificarea.uscg.mil/Our-Organization/District-11/Prevention-Division/LnmRequest/> or call Waterways Management Branch at 510-437-2929 or e-mail D11-SMB-D11-LNM@uscg.mil. Please provide all Local Notice to Mariners submissions 14 days prior to the start of operations

LNM: 17/21

BRIDGE INFORMATION- PROJECTS, DISCREPANCIES, CORRECTIONS & REGULATORY

For all bridge related issues, including lighting, operation, obstructions, construction, demolition, etc. contact the Eleventh Coast Guard District Bridge Administrator 24 hour cell phone at 510-219-4366. Flotsam may accumulate on and near bridge piers and abutments. Mariners should approach all bridges with caution. A vessel delay at a drawbridge may be reported to the District Bridge Administrator by telephone, or by using the Delay_Report_11-2017.pdf included in the Enclosures section of this Local Notice to Mariners.

BRIDGE INFORMATION-COMMUNICATIONS PROTOCOL-BENICIA/MARTINEZ UPRR BRIDGE- CARQUINEZ STRAIT

All mariners requiring a bridge lift at the Benicia-Martinez Union Pacific Railroad Bridge, mile 7.0, over the Carquinez Strait, California, should follow the protocol in the document entitled "Coordination of Communications for Union Pacific Railroad Lift Operations." Mariners can download a copy of the document by selecting the link BENICIA-MARTINEZ RR BRIDGE under the QUICK LINKS section at <https://www.pacificarea.uscg.mil/vtssf>.

CAUTION TO BE USED IN RELIANCE UPON AIDS TO NAVIGATION

The aids to navigation depicted on charts comprise a system of fixed and floating aids to navigation with varying degrees of reliability. Prudent mariners will not rely solely on any single aid to navigation, particularly a floating aid to navigation. With respect to buoys, the buoy symbol is used to indicate the approximate position of the buoy body and the sinker which secures the buoy to the seabed. The approximate position is used because of the practical limitations in positioning and maintaining buoys and their sinkers in precise geographical locations. These limitations include, but are not limited to, inherent imprecision in position fixing methods, prevailing atmospheric and sea conditions, slope of and the material making up the seabed, the fact that buoys are moored to sinkers by varying length of chain, and the fact that the buoy body and/or sinker positions are not under continuous surveillance, but are normally checked only during periodic maintenance visits which often occur more than a year apart. Due to the forces of nature, the position of the buoy body can be expected to shift inside and outside the charted symbol. The mariner is also cautioned that buoys may be extinguished or sound signals may not function as the result of natural causes, collisions, or other accidents. For the foregoing reasons, a prudent mariner must not rely completely upon the position or operation of floating aids to navigation, but will also utilize bearings from fixed objects and aids to navigation on shore. Furthermore, a vessel attempting to pass close aboard always risks collision with a yawing buoy or with the obstruction that the buoy marks.

NAVIGATION CENTER WEBSITE TRANSITION

The U.S. Coast Guard Navigation Center is going to transition the Navigation Center website to a new, enhanced version in the first quarter of 2022. As part of this transition, URLs will be updated across the site including URLs linked to PDFs. Therefore, once the transition is complete, legacy site URLs will no longer function, including bookmarked URLs and URLs used in automatic downloading of data and/or products. Outdated URLs will automatically redirect to the home page of the site, and from there you will be able to easily navigate to your preferred page.

Below are a few of the "old"/new URL pairs listed for your convenience. Please note that the new URLs will not be active until we launch the new

website. Of course, once it is launched, the new URLs will be available for re-bookmarking. As a reminder, these are top level URLs that may contain additional links that you use.

This notice will be updated when the final launch date is determined and another notice will be issued to notify you when the site goes live. Questions/concerns may be directed to the NAVCENWebTEAM@uscg.mil.

Local Notices to Mariners (LNMs)

Current URLs: <https://www.navcen.uscg.gov/?pageName=lnmMain>

Replacement: <https://www.navcen.uscg.gov/local-notices-to-mariners-by-cg-district>

Light Lists Annual Publication

Current URLs: <https://navcen.uscg.gov/?pageName=lightLists>

Replacement: <https://www.navcen.uscg.gov/light-list-annual-publication>

Light List - Weekly

Current URLs: <https://navcen.uscg.gov/?pageName=lightListWeeklyUpdates>

Replacement: <https://www.navcen.uscg.gov/weekly-light-lists>

Light List - Corrections

Current URLs: <https://navcen.uscg.gov/?pageName=lightListCorrections>

Replacement: <https://www.navcen.uscg.gov/light-list-summary-of-corrections>

LNM: 06/22

SAFETY NOTICE - NAVIGATIONAL RANGE AND SECTOR LIGHTS ON ELECTRONIC CHARTS

"The U.S. Coast Guard has become aware that the Range and Sector Light Characteristic labels are not displayed on Electronic Navigational Charts (ENCs) when used in an Electronic Chart Display and Information System (ECDIS) due to limitations of the S-52 ECDIS display specification. Mariners may query the ENC data directly within ECDIS or refer to the Light List for complete information on Range and Sector Light Characteristics."

LNM: 39/22

SOUTHERN CALIFORNIA - CHANNEL ISLANDS - AREA TO BE AVOIDED (ATBA) ENLARGED

In November of 2022, the International Maritime Organization (IMO) issued an adopted amendment, which goes into effect June 1, 2023. The amendment describes changes to the existing Area To Be Avoided (ATBA) around the Channel Islands, CA. As a result of these changes, the Area To Be Avoided (ATBA) has been significantly increased in size. Please be advised that, per an agreement with the USCG Headquarters, NOAA cartographers used more accurate points expressed in degrees, minutes, seconds, and hundredths of seconds, rather than the derived IMO positions published in the IMO circular, which are slightly degraded in terms of accuracy. For details, please see Enclosure included in this Local Notice to Mariners.

Charts: 18020 18022 18700 18720 18724 18725 18728 18729 18740

LNM: 21/23

SOUTHERN CALIFORNIA-SAN DIEGO BAY-MINIMIZE WAKE

The Navy Port Operations Manager requests that vessels slow to 7 kts when a vessel is moored in restricted area (33 CFR 334.865) located on the northeast side of North Island at 32-42-57N 117-11-22W, between San Diego Channel Lighted Buoy 20 (LLNR 1710) and San Diego Channel Lighted Buoy 22 (LLNR 1830). For more details or comments contact LT Rodriguez at 619-545-3232, Rigoberto.rodriguez3@navy.mil.

Chart 18773

LNM: 10/22

SUBMITTING INFORMATION FOR PUBLICATION IN THE LOCAL NOTICE TO MARINERS

Coast Guard District Eleven Waterways upgrade to E-Mail capabilities. All future requests for article submission in the District Eleven Local Notice to Mariners are requested to be E-Mailed to D11-SMB-SMB-D11-LNM@uscg.mil at least two weeks prior to the operation. For more details or comments please contact District Eleven Waterways Management Branch at 510-437-2929 or e-mail D11-SMB-D11-LNM@uscg.mil. Coast Guard District Eleven requests all Local Notice to Mariners submissions be E-Mailed to our office at least 14 days prior to the start of operations for timely submittal and publication.

LNM: 17/21

SECTION II - DISCREPANCIES

This section lists all reported and corrected discrepancies related to Aids to Navigation in this edition. A discrepancy is a change in the status of an aid to navigation that differs from what is published or charted.

DISCREPANCIES (FEDERAL AIDS)

| LLNR | Aid Name | Status | Chart No. | BNM Ref. | LNM St | LNM End |
|------|---------------------------------------|--------|-----------|------------|--------|---------|
| 181 | NOAA Environmental Lighted Buoy 46025 | LT EXT | 18720 | LA-0045-24 | 09/24 | |

| | | | | | |
|-------------|--|---------------------|--------------|-------------------|--------------|
| 240 | Morro Bay West Breakwater Light | SS INOP | 18703 | LA-0018-24 | 04/24 |
| 297 | NOAA Environmental Lighted Buoy 46042 | MISSING | 18680 | SF-0180-23 | 49/23 |
| 330 | Pillar Point Harbor Approach Lighted Buoy PP | TMK MISSING | 18680 | SF-0081-23 | 17/23 |
| 365 | Mile Rocks Light | LT EXT | 18649 | SF-0099-22 | 44/22 |
| 448 | Dart Tsunami Warning Lighted Buoy Station 46411 | ADRIFT | 18010 | SF-0017-24 | 06/24 |
| 490 | Humboldt Bay Entrance Lighted Whistle Buoy HB | REDUCED INT | 18620 | HB-0013-23 | 46/23 |
| 1493 | San Diego Bay Approach Lighted Bell Buoy 4 | LT IMCH | 18772 | SD-0074-22 | 41/22 |
| 1535 | Zuniga Jetty Light W | STRUCT DEST | 18773 | SD-0038-23 | 26/23 |
| 1545 | San Diego Bay Channel Lighted Buoy 8 | OFF STA | 18773 | SD-0070-23 | 39/23 |
| 1619 | San Diego North Island Shallow Water Habitat Light D | STRUCT DEST | 18773 | SD-0016-24 | 05/24 |
| 2295 | Oceanside Breakwater Light 1 | LT EXT/STRUCT DMGD | 18758 | SD-0025-24 | 09/24 |
| 2635 | Ship Rock Light | LT EXT | 18757 | LA-0095-21 | 26/21 |
| 2641 | Isthmus Cove Harbor Reefs Light | STRUCT DMGD | 18757 | LA-0018-21 | 05/21 |
| 2670 | Santa Catalina Island West End Light | LT EXT | 18757 | LA-0113-19 | 34/19 |
| 2800 | Anaheim Bay West Jetty Light 5 | SS INOP | 18749 | LA-0072-24 | 16/24 |
| 2810 | Anaheim Bay Channel Buoy 7 | OFF STA | 18749 | LA-0062-22 | 30/22 |
| 3132 | Terminal Island Channel Lighted Buoy 1 | STRUCT DMGD | 18749 | LA-0027-22 | 16/22 |
| 3330 | Redondo Beach West Jetty Light 3 | STRUCT DEST | 18744 | LA-0021-23 | 09/23 |
| 3685 | Ventura Marina South Breakwater Light 3 | DAYMK MISSING | 18725 | LA-0065-24 | 14/24 |
| 3835 | Morro Bay West Breakwater Light | SS INOP | 18703 | LA-0018-24 | 04/24 |
| 4125 | Southeast Reef Southern End Lighted Gong Buoy 1S | MISSING | 18680 | SF-0004-24 | 02/24 |
| 4130 | Pillar Point Harbor Entrance Lighted Gong Buoy 1 | SS INOP/STRUCT DMGD | 18680 | SF-0082-23 | 17/23 |
| 4245 | Mile Rocks Light | LT EXT | 18649 | SF-0099-22 | 44/22 |
| 4610 | Oakland Outer Harbor Range B Front Light | DAYMK MISSING | 18650 | SF-0070-23 | 14/23 |
| 4625 | Oakland Outer Harbor Range A Rear Light | STRUCT DEST/TRLB | 18650 | SF-0032-24 | 10/24 |
| 4655 | Oakland Outer Harbor Light 13 | MISSING/TRLB | 18650 | SF-0067-23 | 14/23 |
| 4680 | Oakland Inner Harbor Light 10 | MISSING/TRLB | 18650 | SF-0052-21 | 02/22 |
| 4684 | Oakland Inner Harbor Turn Basin Light B | STRUCT DMGD/TRLB | 18650 | SF-0097-21 | 29/21 |
| 4740 | San Leandro Bay Airport Channel Daybeacon 6 | STRUCT DEST/TRUB | 18650 | SF-0033-22 | 15/22 |
| 4745 | Alameda Naval Air Station Channel Entrance Lighted Bell Buoy 1 | MISSING | 18650 | SF-0052-24 | 12/24 |
| 4830 | San Leandro Marina Channel Light 1 | LT EXT/SS INOP | | SF-0012-23 | 02/23 |
| 5225 | Redwood Creek Light 11 | STRUCT DEST/TRLB | | SF-0148-23 | 41/23 |
| 5430 | Berkeley Marina Channel Light 2 | LT EXT | 18650 | SF-0086-22 | 40/22 |
| 5685 | Richmond Harbor Channel Light 4 | MISSING/TRLB | 18653 | SF-0040-24 | 10/24 |
| 5725 | Richmond Harbor Channel Light 9 | MISSING/TRLB | 18649 | SF-0098-22 | 43/22 |
| 5845 | San Rafael Creek Light 3 | STRUCT DEST | 18653 | SF-0109-23 | 48/23 |
| 6095 | Mare Island Strait Light 2 | STRUCT DMGD/TRLB | 18655 | SF-0152-20 | 49/20 |
| 6100 | Mare Island Strait Light 3 | STRUCT DEST/TRLB | 18655 | SF-0173-23 | 47/23 |
| 6240 | Carquinez Strait Light 23 | LT EXT | 18656 | SF-0008-23 | 02/23 |
| 6557 | Suisun Bay Channel Light 24A | STRUCT DEST/TRLB | 18656 | SF-0134-23 | 36/23 |
| 6685 | San Joaquin River Light 8 | STRUCT DMGD/TRLB | 18656 | SF-0109-21 | 02/22 |
| 6760 | San Joaquin River Light 25 | MISSING/TRLB | 18661 | SF-0012-24 | 05/24 |
| 6830 | San Joaquin River Light 39 | STRUCT DMGD | 18661 | SF-0119-23 | 30/23 |

| | | | | | |
|--------|---|------------------|-------|------------|-------|
| 7210 | Sacramento River Deep Water Ship Channel Light 10 | MISSING/TRLB | 18656 | SF-0101-21 | 32/21 |
| 7230 | Sacramento River Deep Water Ship Channel Light 14 | MISSING/TRLB | 18661 | SF-0140-23 | 39/23 |
| 7235 | Sacramento River Deep Water Ship Channel Light 15 | MISSING/TRLB | 18661 | SF-0100-20 | 42/23 |
| 7240 | Sacramento River Deep Water Ship Channel Light 16 | STRUCT DEST/TRLB | 18661 | SF-0127-18 | 34/18 |
| 7260 | Sacramento River Deep Water Ship Channel Light 20 | MISSING/TRLB | 18661 | SF-0108-21 | 05/23 |
| 7810 | Bodega Harbor Channel Light 6 | STRUCT DMGD/TRLB | | SF-0028-21 | 08/23 |
| 7815 | Bodega Harbor Channel Daybeacon 7 | STRUCT DEST/TRLB | | SF-0046-23 | 08/23 |
| 8130 | Humboldt Bay Entrance Lighted Whistle Buoy HB | REDUCED INT | 18620 | HB-0013-23 | 46/23 |
| 8195.1 | Humboldt Bay Light 9 | MISSING | 18620 | HB-0014-23 | 01/24 |

DISCREPANCIES (FEDERAL AIDS) CORRECTED

| LLNR | Aid Name | Status | Chart No. | BNM Ref. | LNM St | LNM End |
|------|---|-------------------|-----------|------------|--------|---------|
| 3106 | Los Angeles Approach Channel Lighted Buoy 2 | WATCHING PROPERLY | 18749 | LA-0058-24 | 12/24 | 16/24 |
| 3109 | Los Angeles Approach Channel Lighted Buoy 6 | WATCHING PROPERLY | 18749 | LA-0071-24 | 16/24 | 16/24 |

DISCREPANCIES (PRIVATE AIDS)

| LLNR | Aid Name | Status | Chart No. | BNM Ref. | LNM St | LNM End |
|--------|--|------------------|-----------|------------|--------|---------|
| 20 | Ocean Beach Pier Fog Sound Signal | SS INOP | 18765 | SD-0002-19 | 05/19 | |
| 158 | Scripps Waverider Lighted Research Buoy 092 | OFF STA | 18746 | | 45/18 | |
| 505 | Scripps Waverider Lighted Research Buoy 168 | LT EXT | 18620 | HB-0003-22 | 14/22 | |
| 1665 | Americas Cup Harbor Daybeacon 2 | STRUCT DEST/TRUB | 18773 | SD-0001-22 | 02/22 | |
| 1720 | Navy San Diego Bay Mooring Buoy 19 | LT EXT | 18773 | SD-0079-23 | 42/23 | |
| 2054 | Sweetwater Channel Light 4 | LT EXT | 18773 | SD-0019-24 | 02/24 | |
| 2056 | Sweetwater Channel Light 6 | LT EXT | 18773 | SD-0018-24 | 02/24 | |
| 2070 | Coronado Cays Channel Daybeacon 3 | STRUCT DEST | 18773 | SD-0098-17 | 36/17 | |
| 2090 | Coronado Cays Channel Light 7 | STRUCT DEST/TRUB | 18773 | SD-0046-22 | 31/22 | |
| 2159.1 | Chula Vista Channel Shoal Light B | STRUCT DEST | 18773 | SD-0021-23 | 14/23 | |
| 2255 | Chula Vista Channel Light 21 | DAYMK MISSING | 18773 | SD-0017-24 | 03/24 | |
| 2288 | Scripps Waverider Lighted Research Buoy 220 | OFF STA | 18765 | SD-0041-20 | 30/20 | |
| 2289.1 | Scripps Waverider Lighted Research Buoy 100 | OFF STA | 18765 | | 22/20 | |
| 2289.4 | Scripps "CORDC" Lighted Research Buoy | MISSING | 18765 | | 22/20 | |
| 2764.4 | Catalina Sea Ranch SE Buoy | MISSING | 18746 | LA-0001-22 | 03/22 | |
| 2847 | Long Beach Harbor Bait Barge LMB "NB" | OFF STA | 18749 | | 12/24 | |
| 2848 | Harbor Bait Barge Lighted Mooring Buoy "LB" | MISSING | 18749 | | 12/24 | |
| 2860 | Long Beach Harbor Harley Marine Mooring Buoy "H" | LT EXT | 18749 | | 12/24 | |
| 2871 | Long Beach Harbor Brusco Lighted Mooring Buoy | LT EXT | 18749 | LA-0009-21 | 03/21 | |
| 2871 | Long Beach Harbor Brusco Lighted Mooring Buoy | LT EXT | 18749 | | 12/24 | |
| 2875 | Long Beach Harbor Bait Barge Lighted Mooring Buoy "FI" | MISSING | 18749 | | 12/24 | |
| 2965 | Catalina Landing West Light | LT EXT | 18749 | | 12/24 | |
| 3028 | Pier F Fireboat Pier Light | LT EXT | 18749 | | 12/24 | |
| 3337 | King Harbor Channel Buoy 1 | OFF STA | 18744 | LA-0028-24 | 07/24 | |
| 3338 | King Harbor Channel Buoy 2 | OFF STA | 18744 | LA-0028-24 | 07/24 | |

| | | | | | |
|--------|--|-------------------|-------|------------|-------|
| 3339.2 | REDONDO HARBOR LIGHT | LT EXT | 18744 | LA-0181-18 | 52/18 |
| 3400 | El Segundo NRG Energy Buoy 6ES | SINKING | 18744 | LA-0153-21 | 39/21 |
| 3420 | Hyperion Lighted Gong Buoy 10 ES | LT EXT | 18744 | | 16/20 |
| 4401 | Richardson Bay Daybeacon 8 | DAYMK DMGD | 18653 | | 15/20 |
| 4480 | San Francisco Bay Anchorage 6 Lighted Mooring Buoy A | MISSING | 18650 | | 46/23 |
| 4480.1 | San Francisco Bay Anchorage 6 Lighted Mooring Buoy B | MISSING | 18650 | | 46/23 |
| 4576 | South Beach Harbor North Entrance Light 2 | LT EXT | 18650 | SF-0047-21 | 11/21 |
| 4577 | South Beach Harbor North Entrance Light 1 | LT EXT | 18650 | SF-0046-21 | 10/21 |
| 4578 | South Beach Harbor South Entrance Light 1 | LT EXT | 18650 | SF-0091-20 | 33/20 |
| 4827.1 | San Francisco Bay Anchorage 9 Lighted Mooring Buoy A | LT EXT | 18650 | SF-0012-20 | 04/20 |
| 4828.1 | San Francisco Bay Anchorage 9 Lighted Mooring Buoy B | MISSING | 18650 | | 39/23 |
| 5661 | Southampton Shoal Outfall Lighted Buoy 1 | SINKING/RAC INOP | 18653 | SF-0136-23 | 38/23 |
| 5662 | Southampton Shoal Outfall Lighted Buoy 2 | LT EXT | 18653 | SF-0059-21 | 14/21 |
| 5877.2 | San Rafael Rock Quarry Mooring Buoy C | MISSING | 18653 | | 36/18 |
| 6623 | New York Slough Koch West Light | LT IMCH | | | 39/18 |
| 6624 | New York Slough Koch East Light | LT EXT | | | 39/18 |
| 6645.5 | Delta Diablo Outfall Lighted Buoy | LT EXT | | SF-0005-22 | 02/22 |
| 6677 | Antioch Marina Entrance Light 1 | LT IMCH | 18656 | | 18/23 |
| 6678 | Antioch Marina Entrance Light 2 | LT IMCH | 18656 | | 39/23 |
| 8325 | Pacific Gas and Electric Dike Light | LT EXT | | HB-0009-21 | 20/21 |
| 8591.1 | Lake Tahoe NASA-JPL Lighted Research Buoy TB2 | Status Unreported | | | 37/22 |

DISCREPANCIES (PRIVATE AIDS) CORRECTED

| LLNR | Aid Name | Status | Chart No. | BNM Ref. | LNM St | LNM End |
|------|----------|--------|-----------|----------|--------|---------|
|------|----------|--------|-----------|----------|--------|---------|

None

PLATFORM DISCREPANCIES

| Name | Status | Position | BNM Ref. | LNM St | LNM End |
|------|--------|----------|----------|--------|---------|
|------|--------|----------|----------|--------|---------|

None

PLATFORM DISCREPANCIES CORRECTED

| Name | Status | Position | BNM Ref. | LNM St | LNM End |
|------|--------|----------|----------|--------|---------|
|------|--------|----------|----------|--------|---------|

None

SECTION III - TEMPORARY CHANGES and TEMPORARY CHANGES CORRECTED

This section contains temporary changes and corrections to Aids to Navigation for this edition. When charted aids are temporarily relocated for dredging, testing, evaluation, or marking an obstruction, a temporary correction shall be listed in Section IV giving the new position.

TEMPORARY CHANGES

| LLNR | Aid Name | Status | Chart No. | BNM Ref. | LNM St | LNM End |
|-------------|--|----------------------------------|--------------|------------|--------------|---------|
| 182 | Scripps Waverider CDIP Lighted Research Buoy 234 | DISCONTINUED | 18720 | LA-0052-24 | 11/24 | |
| 1571 | Ballast Point Shoal Buoy | DISCONTINUED FOR DREDGING | 18773 | SD-0022-24 | 08/24 | |
| 3855 | Morro Bay Channel Lighted Buoy 4 | DISCONTINUED FOR DREDGING | 18703 | | 16/24 | |

| | | | | |
|------|-----------------------------------|---------------------------|-------|-------|
| 3856 | Morro Bay Channel Lighted Buoy 4A | DISCONTINUED FOR DREDGING | 18703 | 16/24 |
| 3860 | Morro Bay Channel Lighted Buoy 5 | DISCONTINUED FOR DREDGING | 18703 | 16/24 |
| 3865 | Morro Bay Channel Lighted Buoy 6 | DISCONTINUED FOR DREDGING | 18703 | 16/24 |
| 3870 | Morro Bay Channel Lighted Buoy 7 | DISCONTINUED FOR DREDGING | 18703 | 16/24 |
| 3875 | Morro Bay Channel Lighted Buoy 8 | DISCONTINUED FOR DREDGING | 18703 | 16/24 |
| 3880 | Morro Bay Channel Buoy 10 | DISCONTINUED FOR DREDGING | 18703 | 16/24 |

TEMPORARY CHANGES CORRECTED

| LLNR | Aid Name | Status | Chart No. | BNM Ref. | LNM St | LNM End |
|------|----------|--------|-----------|----------|--------|---------|
|------|----------|--------|-----------|----------|--------|---------|

None

PLATFORM TEMPORARY CHANGES

| Name | Status | Position | BNM Ref. | LNM St | LNM End |
|------|--------|----------|----------|--------|---------|
|------|--------|----------|----------|--------|---------|

None

PLATFORM TEMPORARY CHANGES CORRECTED

| Name | Status | Position | BNM Ref. | LNM St | LNM End |
|------|--------|----------|----------|--------|---------|
|------|--------|----------|----------|--------|---------|

None

SECTION IV - CHART CORRECTIONS

This section contains corrections to federally and privately maintained Aids to Navigation, as well as NOS corrections.

This section contains corrective actions affecting chart(s). Corrections appear numerically by chart number, and pertain to that chart only. It is up to the mariner to decide which chart(s) are to be corrected. The following example explains individual elements of a typical chart correction.

| Chart Number | Chart Edition | Edition Date | Last Local Notice to Mariners | Horizontal Datum Reference | Source of Correction | Current Local Notice to Mariners |
|--|---------------|--------------|-------------------------------|----------------------------|------------------------|----------------------------------|
| 12327 | 91st Ed. | 19-APR-97 | Last LNM: 26/97 | NAD 83 | | 27/97 |
| Chart Title: NY-NJ-NEW YORK HARBOR - RARITAN RIVER | | | | | | |
| Main Panel 2245 NEW YORK HARBOR | | | | | | |
| (Temp) ADD | | | NATIONAL DOCK CHANNEL BUOY 3 | | CGD01 at 40-41-09.001N | 074-02-48.001W |
| Corrective Action | | Green can | Object of Corrective Action | | Position | |

(Temp) indicates that the chart correction action is temporary in nature. Courses and bearings are given in degrees clockwise from 000 true. Bearings of light sectors are toward the light from seaward. The nominal range of lights is expressed in nautical miles (NM) unless otherwise noted.

50 **9th Ed.** **01-DEC-15** **Last LNM: 34/22** **NAD 83** **16/24**

Chart Title: North Pacific Ocean (eastern part) Bering Sea Continuation

Main Panel 2400 NORTH PACIFIC OCEAN EASTERN PART. Page/Side: A

NOS

LAST EDITION No new editions of chart 50 will be published. It will be canceled on 04-Sep-24. Comparable or larger scale Electronic Navigational Chart (ENC) coverage is available. See "Cancellation of NOAA Paper and Raster Nautical Charts" in Section I of this LNM for details. A list of all canceled NOAA charts is at <https://www.charts.noaa.gov/MCD/Dole.shtml>.

--

--

501 **13th Ed.** **01-JUN-09** **Last LNM: 31/22** **NAD 83** **16/24**

Chart Title: North Pacific Ocean West Coast Of North America Mexican Border To Dixon Entrance

Main Panel 1650 MEXICAN BORDER TO DIXON ENTRANCE. Page/Side: N/A

NOS

LAST EDITION No new editions of chart 501 will be published. It will be canceled on 04-Sep-24. Comparable or larger scale Electronic Navigational Chart (ENC) coverage is available. See "Cancellation of NOAA Paper and Raster

--

--

Nautical Charts" in Section I of this LNM for details. A list of all canceled NOAA charts is at <https://www.charts.noaa.gov/MCD/Dole.shtml>.

| | | | | | |
|---|--|------------------|------------------------|---------------|--------------|
| 530 | 35th Ed. | 01-DEC-15 | Last LNM: 34/22 | NAD 83 | 16/24 |
| <i>ChartTitle: North America West Coast San Diego to Aleutian Islands and Hawai'ian Islands</i> | | | | | |
| Main Panel 2405 SAN DIEGO TO ALEUTIAN ISLANDS AND HAWAIIAN ISLANDS. Page/Side: A | | | | | |
| NOS | | | | | |
| LAST EDITION | No new editions of chart 530 will be published. It will be canceled on 04-Sep-24. Comparable or larger scale Electronic Navigational Chart (ENC) coverage is available. See "Cancellation of NOAA Paper and Raster Nautical Charts" in Section I of this LNM for details. A list of all canceled NOAA charts is at https://www.charts.noaa.gov/MCD/Dole.shtml . | | | | -- |
| 18007 | 33rd Ed. | 01-FEB-09 | Last LNM: 23/21 | NAD 83 | 16/24 |
| <i>ChartTitle: San Francisco to Cape Flattery</i> | | | | | |
| Main Panel 1652 SAN FRANCISCO TO CAPE FLATTERY. Page/Side: N/A | | | | | |
| NOS | | | | | |
| LAST EDITION | No new editions of chart 18007 will be published. It will be canceled on 02-Oct-24. Comparable or larger scale Electronic Navigational Chart (ENC) coverage is available. See "Cancellation of NOAA Paper and Raster Nautical Charts" in Section I of this LNM for details. A list of all canceled NOAA charts is at https://www.charts.noaa.gov/MCD/Dole.shtml . | | | | -- |
| 18010 | 22nd Ed. | 01-SEP-12 | Last LNM: 29/20 | NAD 83 | 16/24 |
| <i>ChartTitle: Monterey Bay to Coos Bay</i> | | | | | |
| Main Panel 1653 MONTEREY BAY TO COOS BAY. Page/Side: N/A | | | | | |
| NOS | | | | | |
| LAST EDITION | No new editions of chart 18010 will be published. It will be canceled on 02-Oct-24. Comparable or larger scale Electronic Navigational Chart (ENC) coverage is available. See "Cancellation of NOAA Paper and Raster Nautical Charts" in Section I of this LNM for details. A list of all canceled NOAA charts is at https://www.charts.noaa.gov/MCD/Dole.shtml . | | | | -- |
| 18020 | 39th Ed. | 01-JAN-12 | Last LNM: 10/21 | NAD 83 | 16/24 |
| <i>ChartTitle: San Diego to Cape Mendocino</i> | | | | | |
| Main Panel 1654 SAN DIEGO TO CAPE MENDOCINO. Page/Side: N/A | | | | | |
| NOS | | | | | |
| LAST EDITION | No new editions of chart 18020 will be published. It will be canceled on 02-Oct-24. Comparable or larger scale Electronic Navigational Chart (ENC) coverage is available. See "Cancellation of NOAA Paper and Raster Nautical Charts" in Section I of this LNM for details. A list of all canceled NOAA charts is at https://www.charts.noaa.gov/MCD/Dole.shtml . | | | | -- |
| 18022 | 36th Ed. | 01-JUN-11 | Last LNM: 10/21 | NAD 83 | 16/24 |
| <i>ChartTitle: San Diego to San Francisco Bay</i> | | | | | |
| Main Panel 1655 SAN DIEGO TO SAN FRANCISCO BAY. Page/Side: N/A | | | | | |
| NOS | | | | | |
| LAST EDITION | No new editions of chart 18022 will be published. It will be canceled on 02-Oct-24. Comparable or larger scale Electronic Navigational Chart (ENC) coverage is available. See "Cancellation of NOAA Paper and Raster Nautical Charts" in Section I of this LNM for details. A list of all canceled NOAA charts is at https://www.charts.noaa.gov/MCD/Dole.shtml . | | | | -- |
| 18602 | 13th Ed. | 01-FEB-12 | Last LNM: 24/17 | NAD 83 | 16/24 |
| <i>ChartTitle: Pyramid Point to Cape Sebastian;Chetco Cove;Hunters Cove</i> | | | | | |
| Main Panel 1802 PYRAMID POINT TO CAPE SEBASTIAN. Page/Side: N/A | | | | | |
| NOS | | | | | |
| LAST EDITION | No new editions of chart 18602 will be published. It will be canceled on 31-Jul-24. Comparable or larger scale Electronic Navigational Chart (ENC) coverage is available. See "Cancellation of NOAA Paper and Raster Nautical Charts" in Section I of this LNM for details. A list of all canceled NOAA charts is at https://www.charts.noaa.gov/MCD/Dole.shtml . | | | | -- |
| 18603 | 17th Ed. | 01-MAR-11 | Last LNM: 44/08 | NAD 83 | 16/24 |
| <i>ChartTitle: St. George Reef and Crescent City Harbor;Crescent City Harbor</i> | | | | | |
| Main Panel 1803 ST. GEORGE REEF AND CRESCENT CITY HARBOR. Page/Side: N/A | | | | | |
| NOS | | | | | |
| LAST EDITION | No new editions of chart 18603 will be published. It will be canceled on 31-Jul-24. Comparable or larger scale Electronic Navigational Chart (ENC) coverage is available. See "Cancellation of NOAA Paper and Raster Nautical Charts" in Section I of this LNM for details. A list of all canceled NOAA charts is at https://www.charts.noaa.gov/MCD/Dole.shtml . | | | | -- |

| | | | | | |
|---|-----------------|------------------|------------------------|---------------|--------------|
| 18623 | 12th Ed. | 01-JAN-12 | Last LNM: 10/12 | NAD 83 | 16/24 |
| <i>ChartTitle: Cape Mendocino and vicinity</i> | | | | | |
| Main Panel 1810 CAPE MENDOCINO AND VICINITY. Page/Side: N/A | | | | | |
| LAST EDITION No new editions of chart 18623 will be published. It will be canceled on 31-Jul-24. Comparable or larger scale Electronic Navigational Chart (ENC) coverage is available. See "Cancellation of NOAA Paper and Raster Nautical Charts" in Section I of this LNM for details. A list of all canceled NOAA charts is at https://www.charts.noaa.gov/MCD/Dole.shtml . | | | | | NOS -- |
| 18649 | 68th Ed. | 01-JUN-13 | Last LNM: 16/20 | NAD 83 | 16/24 |
| <i>ChartTitle: Entrance to San Francisco Bay</i> | | | | | |
| Main Panel 1823 SAN FRANCISCO ENTRANCE. Page/Side: N/A | | | | | |
| LAST EDITION No new editions of chart 18649 will be published. It will be canceled on 31-Jul-24. Comparable or larger scale Electronic Navigational Chart (ENC) coverage is available. See "Cancellation of NOAA Paper and Raster Nautical Charts" in Section I of this LNM for details. A list of all canceled NOAA charts is at https://www.charts.noaa.gov/MCD/Dole.shtml . | | | | | NOS -- |
| 18650 | 58th Ed. | 01-JAN-17 | Last LNM: 09/21 | NAD 83 | 16/24 |
| <i>ChartTitle: San Francisco Bay Candlestick Point to Angel Island</i> | | | | | |
| Main Panel 1824 SAN FRANCISCO BAY CANDLESTICK POINT TO ANGEL ISLAND. Page/Side: A | | | | | |
| LAST EDITION No new editions of chart 18650 will be published. It will be canceled on 31-Jul-24. Comparable or larger scale Electronic Navigational Chart (ENC) coverage is available. See "Cancellation of NOAA Paper and Raster Nautical Charts" in Section I of this LNM for details. A list of all canceled NOAA charts is at https://www.charts.noaa.gov/MCD/Dole.shtml . | | | | | NOS -- |
| 18653 | 12th Ed. | 01-OCT-12 | Last LNM: 16/20 | NAD 83 | 16/24 |
| <i>ChartTitle: San Francisco Bay-Angel Island to Point San Pedro</i> | | | | | |
| Main Panel 1939 SAN FRANCISCO BAY ANGEL ISLAND TO POINT SAN PEDRO. Page/Side: N/A | | | | | |
| LAST EDITION No new editions of chart 18653 will be published. It will be canceled on 31-Jul-24. Comparable or larger scale Electronic Navigational Chart (ENC) coverage is available. See "Cancellation of NOAA Paper and Raster Nautical Charts" in Section I of this LNM for details. A list of all canceled NOAA charts is at https://www.charts.noaa.gov/MCD/Dole.shtml . | | | | | NOS -- |
| 18654 | 45th Ed. | 01-JAN-11 | Last LNM: 09/21 | NAD 83 | 16/24 |
| <i>ChartTitle: San Pablo Bay</i> | | | | | |
| Main Panel 1846 SAN PABLO BAY. Page/Side: N/A | | | | | |
| LAST EDITION No new editions of chart 18654 will be published. It will be canceled on 31-Jul-24. Comparable or larger scale Electronic Navigational Chart (ENC) coverage is available. See "Cancellation of NOAA Paper and Raster Nautical Charts" in Section I of this LNM for details. A list of all canceled NOAA charts is at https://www.charts.noaa.gov/MCD/Dole.shtml . | | | | | NOS -- |
| 18655 | 59th Ed. | 01-OCT-06 | Last LNM: 09/21 | NAD 83 | 16/24 |
| <i>ChartTitle: Mare Island Strait</i> | | | | | |
| Main Panel 2914 MARE ISLAND STRAIT. Page/Side: N/A | | | | | |
| LAST EDITION No new editions of chart 18655 will be published. It will be canceled on 31-Jul-24. Comparable or larger scale Electronic Navigational Chart (ENC) coverage is available. See "Cancellation of NOAA Paper and Raster Nautical Charts" in Section I of this LNM for details. A list of all canceled NOAA charts is at https://www.charts.noaa.gov/MCD/Dole.shtml . | | | | | NOS -- |
| 18656 | 56th Ed. | 01-AUG-10 | Last LNM: 09/21 | NAD 83 | 16/24 |
| <i>ChartTitle: Suisun Bay</i> | | | | | |
| Main Panel 1849 SUISUN BAY. Page/Side: N/A | | | | | |
| LAST EDITION No new editions of chart 18656 will be published. It will be canceled on 31-Jul-24. Comparable or larger scale Electronic Navigational Chart (ENC) coverage is available. See "Cancellation of NOAA Paper and Raster Nautical Charts" in Section I of this LNM for details. A list of all canceled NOAA charts is at https://www.charts.noaa.gov/MCD/Dole.shtml . | | | | | NOS -- |

| | | | | | |
|---|-----------------|------------------|------------------------|---------------|--------------|
| 18658 | 31st Ed. | 01-SEP-07 | Last LNM: 30/19 | NAD 83 | 16/24 |
| <i>ChartTitle: SUISUN BAY-Roe Island and vicinity</i> | | | | | |
| Main Panel 1851 SUISUN BAY ROE ISLAND AND VICINITY. Page/Side: N/A | | | | | |
| LAST EDITION No new editions of chart 18658 will be published. It will be canceled on 31-Jul-24. Comparable or larger scale Electronic Navigational Chart (ENC) coverage is available. See "Cancellation of NOAA Paper and Raster Nautical Charts" in Section I of this LNM for details. A list of all canceled NOAA charts is at https://www.charts.noaa.gov/MCD/Dole.shtml . | | | | | |
| | | | | NOS | -- |
| 18661 | 30th Ed. | 01-MAR-09 | Last LNM: 22/20 | NAD 83 | 16/24 |
| <i>ChartTitle: Sacramento and San Joaquin Rivers Old River, Middle River and San Joaquin River extension;Sherman Island</i> | | | | | |
| Main Panel 1855 SACRAMENTO AND SAN JOAQUIN RIVERS. Page/Side: B | | | | | |
| LAST EDITION No new editions of chart 18661 will be published. It will be canceled on 31-Jul-24. Comparable or larger scale Electronic Navigational Chart (ENC) coverage is available. See "Cancellation of NOAA Paper and Raster Nautical Charts" in Section I of this LNM for details. A list of all canceled NOAA charts is at https://www.charts.noaa.gov/MCD/Dole.shtml . | | | | | |
| | | | | NOS | -- |
| 18662 | 22nd Ed. | 01-MAY-09 | Last LNM: 09/21 | NAD 83 | 16/24 |
| <i>ChartTitle: Sacramento River Andrus Island to Sacramento</i> | | | | | |
| Main Panel 1857 SACRAMENTO RIVER ANDRUS ISLAND TO SACRAMENTO. Page/Side: N/A | | | | | |
| LAST EDITION No new editions of chart 18662 will be published. It will be canceled on 31-Jul-24. Comparable or larger scale Electronic Navigational Chart (ENC) coverage is available. See "Cancellation of NOAA Paper and Raster Nautical Charts" in Section I of this LNM for details. A list of all canceled NOAA charts is at https://www.charts.noaa.gov/MCD/Dole.shtml . | | | | | |
| | | | | NOS | -- |
| 18663 | 6th Ed. | 01-APR-06 | Last LNM: 30/19 | NAD 83 | 16/24 |
| <i>ChartTitle: San Joaquin River Stockton Deep Water Channel Medford Island to Stockton</i> | | | | | |
| Main Panel 1945 SAN JOAQUIN RIVER MEDFORD ISLAND TO STOCKTON. Page/Side: N/A | | | | | |
| LAST EDITION No new editions of chart 18663 will be published. It will be canceled on 31-Jul-24. Comparable or larger scale Electronic Navigational Chart (ENC) coverage is available. See "Cancellation of NOAA Paper and Raster Nautical Charts" in Section I of this LNM for details. A list of all canceled NOAA charts is at https://www.charts.noaa.gov/MCD/Dole.shtml . | | | | | |
| | | | | NOS | -- |
| 18664 | 12th Ed. | 26-AUG-00 | Last LNM: 15/08 | NAD 83 | 16/24 |
| <i>ChartTitle: Sacramento River Sacramento to Fourmile Bend</i> | | | | | |
| Main Panel 1860 SACRAMENTO RIVER SACRAMENTO TO FOURMILE BEND. Page/Side: A | | | | | |
| LAST EDITION No new editions of chart 18664 will be published. It will be canceled on 31-Jul-24. Comparable or larger scale Electronic Navigational Chart (ENC) coverage is available. See "Cancellation of NOAA Paper and Raster Nautical Charts" in Section I of this LNM for details. A list of all canceled NOAA charts is at https://www.charts.noaa.gov/MCD/Dole.shtml . | | | | | |
| | | | | NOS | -- |
| 18685 | 34th Ed. | 01-SEP-12 | Last LNM: 33/16 | NAD 83 | 16/24 |
| <i>ChartTitle: Monterey Bay;Monterey Harbor;Moss Landing Harbor;Santa Cruz Small Craft Harbor</i> | | | | | |
| Main Panel 1868 MONTEREY BAY. Page/Side: N/A | | | | | |
| LAST EDITION No new editions of chart 18685 will be published. It will be canceled on 31-Jul-24. Comparable or larger scale Electronic Navigational Chart (ENC) coverage is available. See "Cancellation of NOAA Paper and Raster Nautical Charts" in Section I of this LNM for details. A list of all canceled NOAA charts is at https://www.charts.noaa.gov/MCD/Dole.shtml . | | | | | |
| | | | | NOS | -- |
| 18703 | 26th Ed. | 01-MAR-13 | Last LNM: 05/21 | NAD 83 | 16/24 |
| <i>ChartTitle: Estero Bay;Morro Bay</i> | | | | | |
| Main Panel 1877 ESTERO BAY. Page/Side: N/A | | | | | |
| LAST EDITION No new editions of chart 18703 will be published. It will be canceled on 31-Jul-24. Comparable or larger scale Electronic Navigational Chart (ENC) coverage is available. See "Cancellation of NOAA Paper and Raster Nautical Charts" in Section I of this LNM for details. A list of all canceled NOAA charts is at https://www.charts.noaa.gov/MCD/Dole.shtml . | | | | | |
| | | | | NOS | -- |
| 18724 | 3rd Ed. | 01-JUN-13 | Last LNM: 17/09 | NAD 83 | 16/24 |
| <i>ChartTitle: Port Hueneme And Approaches;Port Hueneme</i> | | | | | |

Inset 1882 PORT HUENEME. Page/Side: N/A

LAST EDITION No new editions of chart 18724 will be published. It will be canceled on 31-Jul-24. Comparable or larger scale Electronic Navigational Chart (ENC) coverage is available. See "Cancellation of NOAA Paper and Raster Nautical Charts" in Section I of this LNM for details. A list of all canceled NOAA charts is at <https://www.charts.noaa.gov/MCD/Dole.shtml>.

NOS
--

18725 31st Ed. 01-OCT-20 Last LNM: 30/20 NAD 83 16/24
ChartTitle: Port Hueneme to Santa Barbara;Santa Barbara;Channel Islands Harbor and Port Hueneme;Ventura
Main Panel 1884 PORT HUENEME TO SANTA BARBARA - -. Page/Side: -

LAST EDITION No new editions of chart 18725 will be published. It will be canceled on 31-Jul-24. Comparable or larger scale Electronic Navigational Chart (ENC) coverage is available. See "Cancellation of NOAA Paper and Raster Nautical Charts" in Section I of this LNM for details. A list of all canceled NOAA charts is at <https://www.charts.noaa.gov/MCD/Dole.shtml>.

NOS
--

18728 9th Ed. 01-NOV-04 Last LNM: 51/18 NAD 83 16/24
ChartTitle: Santa Cruz Channel
Main Panel 1890 SANTA CRUZ CHANNEL. Page/Side: N/A

LAST EDITION No new editions of chart 18728 will be published. It will be canceled on 31-Jul-24. Comparable or larger scale Electronic Navigational Chart (ENC) coverage is available. See "Cancellation of NOAA Paper and Raster Nautical Charts" in Section I of this LNM for details. A list of all canceled NOAA charts is at <https://www.charts.noaa.gov/MCD/Dole.shtml>.

NOS
--

18729 13th Ed. 01-OCT-05 Last LNM: 49/18 NAD 83 16/24
ChartTitle: Anacapa Passage;Prisoners Harbor
Main Panel 1891 ANACAPA PASSAGE. Page/Side: N/A

LAST EDITION No new editions of chart 18729 will be published. It will be canceled on 31-Jul-24. Comparable or larger scale Electronic Navigational Chart (ENC) coverage is available. See "Cancellation of NOAA Paper and Raster Nautical Charts" in Section I of this LNM for details. A list of all canceled NOAA charts is at <https://www.charts.noaa.gov/MCD/Dole.shtml>.

NOS
--

18744 33rd Ed. 01-AUG-10 Last LNM: 16/09 NAD 83 16/24
ChartTitle: Santa Monica Bay;King Harbor
Main Panel 1894 SANTA MONICA BAY. Page/Side: N/A

LAST EDITION No new editions of chart 18744 will be published. It will be canceled on 31-Jul-24. Comparable or larger scale Electronic Navigational Chart (ENC) coverage is available. See "Cancellation of NOAA Paper and Raster Nautical Charts" in Section I of this LNM for details. A list of all canceled NOAA charts is at <https://www.charts.noaa.gov/MCD/Dole.shtml>.

NOS
--

18746 40th Ed. 01-JAN-17 Last LNM: 10/21 NAD 83 16/24
ChartTitle: San Pedro Channel;Dana Point Harbor
Main Panel 1897 SAN PEDRO CHANNEL. Page/Side: A

LAST EDITION No new editions of chart 18746 will be published. It will be canceled on 05-Jun-24. Comparable or larger scale Electronic Navigational Chart (ENC) coverage is available. See "Cancellation of NOAA Paper and Raster Nautical Charts" in Section I of this LNM for details. A list of all canceled NOAA charts is at <https://www.charts.noaa.gov/MCD/Dole.shtml>.

NOS
--

18749 44th Ed. 01-OCT-15 Last LNM: 21/09 NAD 83 16/24
ChartTitle: San Pedro Bay;Anaheim Bay Huntington Harbor
Main Panel 1902 SAN PEDRO BAY. Page/Side: A

LAST EDITION No new editions of chart 18749 will be published. It will be canceled on 31-Jul-24. Comparable or larger scale Electronic Navigational Chart (ENC) coverage is available. See "Cancellation of NOAA Paper and Raster Nautical Charts" in Section I of this LNM for details. A list of all canceled NOAA charts is at <https://www.charts.noaa.gov/MCD/Dole.shtml>.

NOS
--

18757 11th Ed. 01-SEP-04 Last LNM: 06/08 NAD 83 16/24
ChartTitle: Santa Catalina Island;Avalon Bay;Catalina Harbor;Isthmus Cove
Main Panel 1910 SANTA CATALINA ISLAND. Page/Side: N/A

NOS

LAST EDITION No new editions of chart 18757 will be published. It will be canceled on 31-Jul-24. Comparable or larger scale Electronic Navigational Chart (ENC) coverage is available. See "Cancellation of NOAA Paper and Raster Nautical Charts" in Section I of this LNM for details. A list of all canceled NOAA charts is at <https://www.charts.noaa.gov/MCD/Dole.shtml>. -- --

18758 **8th Ed.** **01-MAR-17** **Last LNM: 06/12** **NAD 83** **16/24**
ChartTitle: Del Mar Boat Basin

Main Panel 1912 DEL MAR BOAT BASIN CAMP JOSEPH H. PENDLETON CALIFORNIA - -. Page/Side: -
 NOS

LAST EDITION No new editions of chart 18758 will be published. It will be canceled on 31-Jul-24. Comparable or larger scale Electronic Navigational Chart (ENC) coverage is available. See "Cancellation of NOAA Paper and Raster Nautical Charts" in Section I of this LNM for details. A list of all canceled NOAA charts is at <https://www.charts.noaa.gov/MCD/Dole.shtml>. -- --

18765 **17th Ed.** **01-NOV-10** **Last LNM: 10/20** **NAD 83** **16/24**
ChartTitle: Approaches to San Diego Bay;Mission Bay

Main Panel 1917 APPROACHES TO SAN DIEGO BAY. Page/Side: N/A

LAST EDITION No new editions of chart 18765 will be published. It will be canceled on 05-Jun-24. Comparable or larger scale Electronic Navigational Chart (ENC) coverage is available. See "Cancellation of NOAA Paper and Raster Nautical Charts" in Section I of this LNM for details. A list of all canceled NOAA charts is at <https://www.charts.noaa.gov/MCD/Dole.shtml>. -- --

18772 **48th Ed.** **01-DEC-05** **Last LNM: 10/20** **NAD 83** **16/24**
ChartTitle: Approaches to San Diego Bay

Main Panel 1919 APPROACHES TO SAN DIEGO BAY. Page/Side: N/A

LAST EDITION No new editions of chart 18772 will be published. It will be canceled on 31-Jul-24. Comparable or larger scale Electronic Navigational Chart (ENC) coverage is available. See "Cancellation of NOAA Paper and Raster Nautical Charts" in Section I of this LNM for details. A list of all canceled NOAA charts is at <https://www.charts.noaa.gov/MCD/Dole.shtml>. -- --

18773 **43rd Ed.** **01-MAY-12** **Last LNM: 10/20** **NAD 83** **16/24**
ChartTitle: San Diego Bay

Main Panel 1920 SAN DIEGO BAY. Page/Side: N/A

LAST EDITION No new editions of chart 18773 will be published. It will be canceled on 31-Jul-24. Comparable or larger scale Electronic Navigational Chart (ENC) coverage is available. See "Cancellation of NOAA Paper and Raster Nautical Charts" in Section I of this LNM for details. A list of all canceled NOAA charts is at <https://www.charts.noaa.gov/MCD/Dole.shtml>. -- --

18774 **12th Ed.** **01-JUL-11** **Last LNM: 10/21** **NAD 83** **16/24**
ChartTitle: Gulf of Santa Catalina;Delmar Boat Basin-Camp Pendleton

Main Panel 1922 GULF OF SANTA CATALINA. Page/Side: N/A

LAST EDITION No new editions of chart 18774 will be published. It will be canceled on 05-Jun-24. Comparable or larger scale Electronic Navigational Chart (ENC) coverage is available. See "Cancellation of NOAA Paper and Raster Nautical Charts" in Section I of this LNM for details. A list of all canceled NOAA charts is at <https://www.charts.noaa.gov/MCD/Dole.shtml>. -- --

SECTION V - ADVANCE NOTICES

This section contains advance notice of approved projects, changes to aids to navigation, or upcoming temporary changes such as dredging, etc. Mariners are advised to use caution while transiting these areas.

SUMMARY OF ADVANCED APPROVED PROJECTS

| <u>Approved Project(s)</u> | <u>Project Date</u> | <u>Ref. LNM</u> |
|-----------------------------------|----------------------------|------------------------|
| None | | |

Advance Notice(s)

CALIFORNIA-SAN FRANCISCO TO SAN DIEGO-REMOVAL OF RACONS ON AIDS TO NAVIGATION

The U.S. Coast Guard will be removing the RACONS from aids to navigation located along the California Coast due to the consistent failure of the signals and that they are no longer considered necessary for safe navigation of the waterways. While there is no specific timeline for the removal of this equipment, it will be coordinated with servicing and discrepancy responses. The removal of the RACONS will be announced by Broadcast Notice to Mariners and published in the Local Notice to Mariners as Chart and Light List corrections. These aids to navigation are:

Harding Rock Lighted Buoy HR (LLNR 4330): 37-50-17.661N 122-26-45.579W
 Los Angeles Approach Channel Lighted Whistle Buoy 3 (LLNR 3107): 33-41-16.012N 118-14-24.050W
 Long Beach Channel Approach Lighted Whistle Buoy LB (LLNR 3010): 33-41-24.013N 118-11-01.050W
 Mariners are requested to respond in writing to the Coast Guard District office with any comments on this change at D11-SMB-D11-LNM@uscg.mil.
 Any discrepancy for these or other Aids to Navigation should continue to be reported to the closest US Coast Guard Sector.
 Charts: 18007 18010 18022 18640 18649 18650 18680 18746 18749 18765 18772 LNM: 33/23

SECTION VI - PROPOSED CHANGES

Periodically, the Coast Guard evaluates its system of aids to navigation to determine whether the conditions for which the aids to navigation were established have changed. When changes occur, the feasibility of improving, relocating, replacing, or discontinuing aids are considered. This section contains notice(s) of non-approved, proposed projects open for comment. SPECIAL NOTE: Mariners are requested to respond in writing to the District office unless otherwise noted (see banner page for address).

PROPOSED WATERWAY PROJECTS OPEN FOR PUBLIC COMMENT

| <u>Proposed Project(s)</u> | <u>Closing</u> | <u>Docket No.</u> | <u>Ref. LNM</u> |
|-----------------------------------|-----------------------|--------------------------|------------------------|
| None | | | |

Proposed Change Notice(s)

NORTHERN CALIFORNIA-HUMBOLDT BAY-HUMBOLDT BAY LIGHT 9

The U.S. Coast Guard is proposing to permanently change Humboldt Bay Light 9 (LLNR 8195.1) from a fixed aid to a floating aid. The aid is in position 40-45-26.441N, 124-13-25.363W. Please direct questions, comments, or concerns no later than 22 May, 2024 to LTJG Samantha Hu at Samantha.G.Koval@uscg.mil.

Chart 18620 LNM: 13/24

NORTHERN CALIFORNIA-HUMBOLDT BAY-SOUND SIGNAL DEVICE REMOVAL

The U.S. Coast Guard is proposing to permanently discontinue the sound signal device on the following Aids to Navigation:

Albion River Light 1 – LLNR 8080

Trinidad Head Light – LLNR 525

Please direct questions, comments, or concerns no later than 15 May, 2024 to LTJG Samantha Hu at 206-827-3518 or Samantha.G.Koval@uscg.mil.

Chart 18620 LNM: 12/24

SECTION VII - GENERAL

This section contains information of general concern to the Mariners. Mariners are advised to use caution while transiting these areas.

ANNOUNCEMENT – U.S. Coast Pilot® 7 and U.S. Coast Pilot® -NEW EDITIONS-Spring 2023

PUBLICATION–National Oceanic Atmospheric Administration (NOAA) – U.S. Coast Pilot 7, Pacific Coast:

California, 55th Edition, 2023, has been issued and is ready for free download and weekly updates at

www.nauticalcharts.noaa.gov/publications/coast-pilot/index.html.

Only Print-on-Demand (POD) bound copies are available for purchase; visit nauticalcharts.noaa.gov/publications/print-agents.html#coast-pilot.

The 2023 Edition cancels the preceding 2022 Edition, and incorporates all previous corrections.

LNM: 22/23

ARIZONA/NEVADA-COLORADO RIVER-BRIDGE

NEW LAUGHLIN-BULLHEAD CITY BRIDGE- The new bridge, in approximate position 35-03-17N 114-36-45W, completely spans the waterway. Work continues Monday through Friday, 0630 to 1430. The center span of the bridge provides 30 ft of vertical clearance at ordinary high water and is lighted on the upstream and downstream sides with green center channel lights. For on-site conditions contact 702-455-6030 or 702-817-7088, or 702-286-0137. For further information contact the Coast Guard Bridge Office at 510- 437-3515.

LNM: 02/24

CALIFORNIA- OFFSHORE CALIFORNIA-SALMON FISHERIES

NMFS has taken inseason actions in the commercial and recreational salmon fisheries south of Cape Falcon. Please broadcast the NTM below three times daily beginning Sunday, 10 March, 2024 and continuing through Wednesday, 20 March, 2024.

EFFECTIVE MAY 1, 2024 AT 12:01 AM THE COMMERCIAL SALMON FISHERY FROM THE OREGON/CALIFORNIA BORDER TO HUMBOLDT SOUTH JETTY IS CLOSED.

EFFECTIVE APRIL 16, 2024 AT 12:01 AM THE COMMERCIAL SALMON FISHERY FROM LATITUDE 40°10' N AND POINT ARENA, CA, IS CLOSED.

EFFECTIVE MAY 1, 2024 AT 12:01 AM THE COMMERCIAL SALMON FISHERY FROM POINT ARENA, CA TO PIGEON POINT, CA IS CLOSED.

EFFECTIVE MAY 1, 2024 AT 12:01 AM THE COMMERCIAL OCEAN SALMON FISHERY FROM PIGEON POINT, CA TO THE U.S./CANADA BORDER IS CLOSED.

EFFECTIVE MAY 1, 2024 AT 12:01 AM THE RECREATIONAL SALMON FISHERY FROM THE OREGON/CALIFORNIA BORDER TO LATITUDE 40°10' N IS CLOSED.

EFFECTIVE APRIL 6, 2024 AT 12:01 AM THE RECREATIONAL SALMON FISHERY FROM LATITUDE 40°10' N TO POINT ARENA, CA IS CLOSED.

EFFECTIVE APRIL 6, 2024 AT 12:01 AM THE RECREATIONAL SALMON FISHERY FROM POINT ARENA, CA TO PIGEON POINT, CA IS CLOSED

EFFECTIVE APRIL 6, 2024 AT 12:01 AM THE RECREATIONAL SALMON FISHERY FROM PIGEON POINT, CA TO THE U.S./MEXICO BORDER IS CLOSED.

Charts: 18620 18640 18680 18700 18720 18740 LNM: 11/24

CALIFORNIA-CALIFORNIA COAST-VOLUNTARY VESSEL SPEED REDUCTION

CALIFORNIA-CALIFORNIA COAST-VOLUNTARY VESSEL SPEED REDUCTION

NOAA, U.S. Coast Guard and the Environmental Protection Agency request that all vessels 300 gross registered tons (GRT) or larger reduce speeds to 10 knots or less when transiting in the Vessel Speed Reduction zones off of San Francisco and Monterey from 1 May, 2024 until 31 December, 2024, and off Southern California from 1 May, 2024 until 15 December, 2024 to protect endangered whales. See 2024 NOAA USCG EPA VSR Announcement pdf in the enclosure section. These areas contain populations of endangered blue, humpback, and fin whales that are federally protected under the Federal Endangered Species Act (16 USC 1538 et seq.), the Marine Mammal Protection Act (16 USC 1361 et seq.), and the National Marine Sanctuaries Act (16 USC 1431 et seq.). Please report any collisions with whales or any observed injured or dead whales to the U.S. Coast Guard on VHF Channel 16. NOAA is asking for the public's help in tracking whales. Please report sightings through Whale Alert, a free application available at <http://westcoast.whalealert.org/>. For more information, contact Sean Hastings at 805-705-1790 or email at sean.hastings@noaa.gov.

LNM: 16/24

CALIFORNIA-USCG-NEW MERCHANT MARINER CREDENTIAL

The U.S. Coast Guard announced a new merchant mariner credential (MMC) set to launch on March 1, 2024. This milestone marks the first comprehensive revision of the mariner credential in nearly a decade and is strategically designed to enhance both quality of service and security within the Marine Transportation System (MTS). U.S. Coast Guard Marine Safety Information Bulletin (MSIB) 01-24, New Merchant Mariner Credential Passport Booklet Replacement, has been posted on the DCO's MSIB Site and announced at the National Maritime Center (CG-NMC) Home Page (uscg.mil). Please visit these resources for more information on the credential.

LNM: 09/24

LOWER COLORADO RIVER-LAKE HAVASU-MARINE EVENT

Nautiwater Racing will be sponsoring Lake Havasu Water X from 19-21 April, 2024 between 9:00am until 7:00pm each day. The event will involve personal watercraft races from the shoreline and around A6 buoys. Mariners are requested to transit the area with caution. For more details or comments contact Terry Hiebert at 316-312-4049.

LNM: 14/24

LOWER COLORADO RIVER-LAKE HAVASU-MARINE EVENT

Desert Storm 2.0 will be sponsoring the Desert Storm Poker Run and Shootout from 26-28 April, 2024 in Lake Havasu, AZ. The poker run will occur on 26 April, 2024, at 11:00am and will include a parade through Bridgewater Channel and card stops until 2:00pm. The shootout will occur on 27 April, 2024, from 9:00am until 5:00pm involving individual boat races, with a backup day on 28 April, 2024. A special local regulation zone will be in effect from 11:00am until 5:00pm on 26 April, 2024, and 10:00am until 3:00pm on 27 April, 2024. In case of inclement weather, special local regulations will also be in effect on Sunday, April 28, 2024 from 10:00am until 3:00pm. Mariners are advised to use due caution when transiting near the event area. For more details or comments, contact Jim Russell at 928-208-2252.

LNM: 14/24

LOWER COLORADO RIVER-LAUGHLIN-MARINE EVENT

The Avi Resort & Casino will be hosting the Fireworks Over the Colorado River fireworks event on 6 April, May 26, July 4, and September 1, 2024 from 7:00pm to 9:00pm each day in Laughlin, NV. Waterway closures will be in effect from Veterans Bridge to the north end of Avi Resorts Lagoon during the event. Mariners are requested to transit the area with caution. For more details or comments contact David Smith at 702-420-3928.

LNM: 11/24

LOWER COLORADO RIVER-PARKER-MARINE EVENT

The Arizona Drag boat Association will be sponsoring Thunder on the River 2 from 19-21 April, 2024 between 8:00am until 5:30pm each day. The event will take place along a 1000 ft course. Mariners are requested to transit the area with caution. For more details or comments contact Jeremy Denny at 602-614-0560

LNM: 14/24

NORTHERN CALIFORNIA- PIONEER CANYON- OCEANOGRAPHIC SURVEY OPERATIONS

SAILDRONE, INC. is conducting offshore oceanographic research and survey testing and will operate unmanned Surface Vehicles (USV's) called SAILDRONE EXPLORER and SAILDRONE VOYAGER from 30 June, 2024 in the area eastbound traffic lane and southbound traffic lane extending out to the Pioneer Canyon Area at:

37-40-09N 122-46-01W

37-39-34N 122-44-19W

37-13-12N 122- 44-17W

37-25-36N 123-13-15W

The Saildrone Explorer is 23 feet long, 16 feet tall, painted orange with a white all-around light on top and marked SAILDRONE. The SAILDRONE VOYAGER is 33 feet long, 21 feet tall and painted orange or gray with a tri-color light on top. Saildrones will broadcast AIS and travel at a speed up to 5 knots. Mariners are requested to transit the area with caution. For more details or comments contact Saildrone Mission Control at missioncontrol@saildrone.com or 510-722-6070.

Charts: 18640 18650

LNM: 13/24

NORTHERN CALIFORNIA-ACKER ISLAND-MARINE OPERATIONS

Dutra is conducting marine operations for the material placement and debris removal occurring at Lost Isle Resort on Acker Island from 15 February, 2024 until 30 April, 2024. CB TM20 equipped with a Bucyrus-Erie 88b Excavator along with a TB will be utilized on the project and will be monitoring CHF-FM Chan. 9, 16, & 68A. The crane barge will be spudded in with flashers on all corners along with all other marine equipment. Mariners are requested to transit the area with caution. For more details or comments contact Lucas Dutra at 707-378-3822.

Chart 18661

LNM: 06/24

NORTHERN CALIFORNIA-ALCATRAZ ISLAND-MARINE CONSTRUCTION

Manson Construction Co. will be conducting marine construction to the wharf at Alcatraz Island at 37-49-36N 122-25-15W. Construction will begin on 23 January, 2023 and be completed on 04 October, 2025. During construction DB HAGAR will be utilizing divers during low tide. Tug WESTAR will be assisting DB HAGAR and monitoring VHF-FM Chan. 13 and 16. Mariners are requested to transit the area with caution. For more details or comments contact Matt Lehmann at 510-529-1583.

Chart 18653

NORTHERN CALIFORNIA-ALCATRAZ ISLAND-MARINE CONSTRUCTION

LNM: 50/22

NORTHERN CALIFORNIA-CHINA BASIN-BRIDGE

THIRD STREET BRIDGE-The east side red/green bascule light is extinguished due to sidewalk repairs. Estimated time to reenergize the light is 18 March, 2024. For further information contact the Coast Guard Bridge Office at 510-219-4366.

Chart 18649

LNM: 03/24

NORTHERN CALIFORNIA-DELTA & RIVERS-AMERICAN RIVER-BRIDGE

CAPITAL CITY HWY (Route 51) BRIDGE-Caltrans is conducting rehabilitation of the bridge until 27 June, 2025. Work will be conducted during daylight hours, 7am to 5:30pm, Monday through Friday, and will include the use of barges, work boats, tugboats, turbidity curtains, and access piers. (See AmRiv_SiltCurtain_BargeLocation.pdf in the enclosure section.). During the workday, barges can be moved for the safety of navigation with one hour notice to the contractor via VHF-FM CH 16 or by cell at 916-532-8208. Mariners should contact the contractor before transiting the bridge to determine location of turbidity curtains. Barges will be unmanned and moored at their work locations overnight. Each corner of each barge will be lighted at night with steady burning red lights. At least 25 feet of horizontal clearance for navigation will be available at all times. Mariners are requested to transit the area with caution. For further information, contact the Coast Guard Bridge Office at 510-437-3461.

Chart 18662

LNM: 23/22

NORTHERN CALIFORNIA-DELTA & RIVERS-LITTLE POTATO SLOUGH-BRIDGE

LITTLE POTATO SLOUGH BRIDGE (STATE ROUTE 12)-The northwest upstream swing span light and the two east side swing span lights are extinguished. For further information contact the Coast Guard Bridge Office at 510-437-3514.

Chart 18661

LNM: 16/24

NORTHERN CALIFORNIA-DELTA & RIVERS-MIDDLE RIVER-BRIDGE

CA ROUTE 4-The downriver northeast dolphin has been partially removed, exposing the center steel pile of the dolphin. There is no protection around the steel pile. A red light is mounted atop the steel pile. Mariners are urged to transit the area with caution. For further information contact the Coast Guard Bridge Office at 510-437-3516.

Chart 18661

LNM: 44/23

NORTHERN CALIFORNIA-DELTA & RIVERS-MOKELUMNE RIVER-BRIDGE

MOKELUMNE RIVER BRIDGE (CA ROUTE 12)-The west side pier axis light is reported extinguished. For further information contact the Coast Guard Bridge Office at 510-437-3514.

Chart 18661

LNM: 16/24

NORTHERN CALIFORNIA-DELTA & RIVERS-NAPA RIVER-BRIDGE

HIGHWAY 37 BRIDGE-Repairs to the damaged east and west side fenders will take place Monday through Friday, during daylight hours, 01 Nov, 2023 through 01 May, 2024. The 188' X 60' crane barge "MORTY" or "KELSO" will be on-site along with the tug "PHYLLIS T" or "BECKY T" and will be moored, with anchors and spuds, in the channel span at various times, upstream and downstream of the bridge, temporarily reducing horizontal clearance of the bridge. During the workday, the barge can be moved for navigational safety if at least a two-hour notice is given to the tug via VHF-FM Channel 13, 14, or 16 or via cell phone at 415-686-9397. After normal working hours, the tug and barge will be moored off-site and the channel span of the bridge will be clear. After hours mariners can call 415-300-5336 or 415-686-3938 to report any discrepancies at the work site. For further information mariners can contact the Coast Guard Bridge Office at 510-437-3461.

Chart 18654

LNM: 42/23

NORTHERN CALIFORNIA-DELTA & RIVERS-OLD RIVER-BRIDGE

CA ROUTE 4 BRIDGE- Critical bridge rehabilitation is taking place 7am-3:30pm, Monday through Friday. Caltrans is anticipating a 30 April, 2024 time frame for project completion. The swing span WILL NOT open for the passage of vessels. In the closed position, the bridge provides 12' vertical clearance above mean high water. Vessels able to transit the bridge while closed can continue to do so at any time, but only through the south channel. For conditions at the work site, mariners can contact the contractor at 209-513-7309 or 415-375-5549; or Caltrans at 209-470-8835 or 209-465-0935. For further information, contact the Coast Guard Bridge Office at 510-437-3461.

Chart 18661

LNM: 07/24

NORTHERN CALIFORNIA-DELTA & RIVERS-OLD RIVER-BRIDGE

BNSF RAILROAD DRAWBRIDGE-Fender work is being conducted at the bridge, Monday through Saturday, 6 am to 4:30 pm, 25 March, 2024 through 27 September, 2024. A 50' X 80' flexi-float barge and a 50' X 110' material barge will be spudded down at the piers (See BNSF_OldRiver_Barge_Lighting01.pdf in the enclosure section). The material barge will be moored behind the fender system at all times and the flexi-float will be moored against the pier protection being worked in in the navigation span. For the safety of navigation, the flexi-float can be moved if 1-hour notice is given to the contractor at 206-391-5461 or 206-450-4639. Mariners are requested to transit the area with caution. For on-site conditions contact the contractor. For further information contact the Coast Guard Bridge Office at 510-437-3515 or D11-SG-M-DPW-Bridges@uscg.mil.

Chart 18661

LNM: 13/24

NORTHERN CALIFORNIA-DELTA & RIVERS-PETALUMA RIVER-BRIDGE

BLACK POINT RAILROAD BRIDGE- The upstream northeast side fenders are damaged and may not offer adequate protection for the bridge or vessels. Mariners are urged to exercise caution when transiting through the bridge. Estimated time of repairs is unknown. For comments, contact the Coast Guard Bridge Office at (510) 437-3461.

Chart 18654

LNM: 28/23

NORTHERN CALIFORNIA-DELTA & RIVERS-SACRAMENTO RIVER-BRIDGE

TOWER BRIDGE-The lift span of the bridge will be secured in the closed-to-navigation position from 7:30 am to 12 Noon on 01 Jun, 2024 for a community event. When closed the bridge provides 29' of vertical clearance above mean high water. Vessels able to transit the bridge while closed can continue to do so at any time. In the event of an emergency, the span can open on signal if at least one hour notice is given to the drawtender. For further information contact the Coast Guard Bridge Office at (510) 219-4366.

NORTHERN CALIFORNIA-DELTA & RIVERS-SACRAMENTO RIVER-BRIDGE

Chart 18664

LNM: 14/24

NORTHERN CALIFORNIA-DELTA & RIVERS-SACRAMENTO RIVER-BRIDGE

PAINTERSVILLE BRIDGE-Debris is built up on the northwest clearance gauge dolphin with a log protruding into the navigation span. For further information contact the Coast Guard Bridge Office at 510-437-3514.

Chart 18662

LNM: 15/24

NORTHERN CALIFORNIA-DELTA & RIVERS-SACRAMENTO RIVER-BRIDGE

REPLACEMENT BUTTE CITY BRIDGE- Replacement bridge construction continues Monday through Friday during daylight hours until 25 September, 2026. A temporary trestle, along with falsework, has been installed at the bridge site. High flood waters have caused damaged to the temporary trestle. The alternate navigation span during construction has moved from the center of the trestle to the east bank of the river. Mariners are requested to use extreme caution when transiting the construction site. The alternate navigation span will be moved back to its original position once water flows recede, and the trestle can be repaired. For on-scene conditions contact Golden State Bridge, Inc, at 415-720-6577 or 925-260-0403 or Caltrans at 530-941-8272 or 530-682-3931. For further information contact the Coast Guard Bridge Office at 510-437-3461.

LNM: 09/24

NORTHERN CALIFORNIA-DELTA & RIVERS-SACRAMENTO RIVER-BRIDGE

RIO VISTA BRIDGE-Wire rope replacement is ongoing so the lift span of the bridge will open on signal if at least 4-hour notice is given to the drawtender at 707-374-2134. Starting at 6 pm on 14 March, 2024 the draw span of the bridge will operate as follows; Monday through Saturday, 6 pm to 9 am the following day, the bridge will be secured in the closed-to-navigation position for wire rope replacement and at all other times, the bridge will open on signal if at least 4-hours notice is given to the bridge tender at 707-374-2134. It is anticipated wire rope replacement will take at least 40 nights to complete if not delayed by weather. For further information contact the Coast Guard Bridge Office at 510-437-3516 or D11-SG-M-DPW-Bridges@uscg.mil.

Chart 18661

LNM: 11/24

NORTHERN CALIFORNIA-DELTA & RIVERS-SACRAMENTO RIVER-BRIDGE

RIO VISTA BRIDGE-The upriver and downriver green center channel lights on the lift span are not operational. The center span channel lights show red in all positions, even when the span is in the fully open-to-navigation position. The bridgetender will be able to inform any vessel requesting an opening when the lift span is fully open. Estimated time of repair is unknown. For further information contact the Coast Guard Bridge Office at 510-437-3516.

Chart 18661

LNM: 49/22

NORTHERN CALIFORNIA-DELTA & RIVERS-SAN JOAQUIN RIVER-BRIDGE

CROWS LANDING ROAD BRIDGE-Replacement of the bridge is ongoing. Work is being conducted Monday through Friday 6am to 4pm until 30 June, 2024. A temporary bridge, with a removable span, is installed to facilitate construction. With the span removed, the temporary bridge will provide, at a minimum, 15ft of horizontal clearance. Temporary falsework has also been installed. The temporary falsework's navigation span will provide 16ft of vertical clearance at Ordinary High Water when the temporary bridge's removable span is removed. Upriver and downriver red channel margin lights and green center channel lights will mark the temporary navigation span at night. To view the temporary navigation span and lighting, see the TemporaryBridge_FalseworkLighting.pdf enclosure at the end of this notice. Mariners are requested to use extreme caution when transiting the work site. For conditions at the project site, mariners can contact the contractor at 916-869-8210. For further information contact the Coast Guard Bridge Office at 510-437-3461.

LNM: 46/23

NORTHERN CALIFORNIA-DELTA & RIVERS-STEAMBOAT SLOUGH-BRIDGE

STEAMBOAT SLOUGH BRIDGE- The southeast red pier light is extinguished. For further information contact the Coast Guard Bridge Office at 510-437-3514.

Chart 18662

LNM: 16/24

NORTHERN CALIFORNIA-DELTA & RIVERS-THREE MILE SLOUGH-BRIDGE

THREE MILE SLOUGH BRIDGE- The lift span of the bridge will be secured in the closed-to-navigation position from 02 Jan, 2024 through 30 Jun, 2024, to conduct major mechanical and electrical rehabilitation. During the work, the lift span will not be able to open for the passage of vessels. In the closed position the bridge provides 12 feet of vertical clearance at mean high water. Vessels able to pass through the bridge while closed can continue to do so at any time. For further information contact the Coast Guard Bridge Office at 571-607-5820.

Chart 18661

LNM: 50/23

NORTHERN CALIFORNIA-DELTA & RIVERS-TURNER CUT-BRIDGE

ZUCKERMAN BROTHERS BRIDGE-The retractable span of the bridge is secured in the closed-to-navigation position due to mechanical and electrical issues. When closed the bridge provides 16 feet of vertical clearance at mean high water. Vessels able to transit the bridge while closed can continue to do so at any time. Estimated time of repair, unknown. For further information contact the Coast Guard Bridge Office at 510-467-3516.

Chart 18661

LNM: 25/23

NORTHERN CALIFORNIA-FORT BRAGG-BUOY DEPLOYMENT

Oneka Technologies will deploy two wave monitoring research buoys on 07 October, 2023 near Fort Bragg, CA with the characteristics of FI Y 2.5s at 39-26-38.26N 123-49-27.48W and 39-26-36.71N 123-49-23.20W. RV SCULLY will be deploying the buoys and will be monitoring VHF-FM Chan. 16. The buoys will be deployed until 10 July, 2025. Mariners are requested to transit the area with caution. For more details or comments contact Jeff Williams at 707-974-0917.

Chart 18620

LNM: 40/23

NORTHERN CALIFORNIA-HUMBOLDT HARBOR & BAY- DREGING OPERATIONS

The Corps of Engineers will be conducting dredging operations from approximately 22 April, 2024 through 31 May, 2024 in the Federally authorized Navigation Channels. The Government Hopper Dredge ESSAYONS will be performing annual maintenance dredging on the Bar & Entrance and Middle Ground Channels. The vessel YAQUINA will be working in Interior Channels, which include North Bay, and Eureka. Disposal will be at the

NORTHERN CALIFORNIA-HUMBOLDT HARBOR & BAY- DREGING OPERATIONS

designated offshore Humboldt Open Ocean Disposal Site (HOODS). Mariners are requested to transit the area with caution. Vessels will be monitoring VHF-FM Chan. 16. For more details or comments contact, YAQUINA'S Master at 541-974-7596 or 541-974-4418 or ESSAYON'S Master at 503-808-5035 or 503-808-4990.

Charts: 18650 18655 18656

LNM: 16/24

NORTHERN CALIFORNIA-HUMBOLDT-WIND ENERGY PROJECT

The Humboldt Wind Energy Area includes the joint Fisheries Communication Plan developed by RWE and Vineyard Offshore to inform and guide communications between leaseholders in the Humboldt Wind Energy Area located 17-29 nautical miles off the coast of Humboldt, the fishing industry, and other marine users. The current version of this Plan, along with all subsequent revisions, will be available on the Companies' websites. RWE: <https://americas.rwe.com/-/media/RWE/RWE-USA/documents/rwe-vineyard-offshore-joint-fcp.pdf>. Vineyard Offshore: <https://www.vineyardoffshore.com/california>. Please provide any feedback on this plan via email to Rick Robins at rick.robins@rwe.com 757-876-3778 or Lucia Ordóñez at lordonez@vineyardoffshore.com 707-572-9011.

Chart 18620

LNM: 06/24

NORTHERN CALIFORNIA-MONTEREY BAY-BUOY DEPLOYMENT

University of California Santa Barbara has deployed research Wave Buoy Station CDIP 266 in position 36-50-41N 121-49-28W with characteristics of a flashing yellow light every 5 seconds. Mariners are requested to transit the area with caution. For more details or comments contact University of California Santa Barbara at 858-534-3032 or admin@cdip.ucsd.edu.

Chart 18685

LNM: 17/23

NORTHERN CALIFORNIA-MONTEREY- WAVEGLIDER DATA COLLECTION

The Monterey Bay Aquarium Research Institute (MBARI) will be conducting 24/7 autonomous, unmanned maritime vehicle operations of two Liquid Robotics, Inc. Wavegliders from 25 January, 2024 until 31 December, 2024 between latitudes 36-18-00N and 37-12-00N and will extend shoreward from as far west as 122-58-35W longitude. Operations consist of scientific ocean data collection. Wave Glider carries no fuel, lubricants, or hydrocarbons, is wave powered, remotely attended from MBARI, moving at speeds of ~1kt, and designed to give way or part if encountered by a vessel. It is approximately 8' x 2' (surfboard size), yellow/copper in color, with a contact plaque and mast extending 1 meter above the water surface supporting a flag. Mariners are advised to use caution when transiting the area. For further information, authorities and mariners can contact MBARI at 831-775-1700, waveglider@listserver.mbari.org, or Liquid Robotics 24/7 WGOE Operations at 888-574-4574 or 408-636-4205.

Chart 18685

LNM: 05/24

NORTHERN CALIFORNIA-NAPA- DIRECTIONAL DRILLING OPERATION

PG&E will be conducting horizontal directional drilling operations below the Napa River to install a pipeline crossing in Napa at 38-14-30N 122-17-10W from 22 April, 2024 until 31 October, 2024. Construction equipment will be staged on land above the adjacent shorelines. Mariners are requested to transit the area with caution. For more details or comments contact Garrett Pon at 925-658-0672.

Chart 18654

LNM: 11/24

NORTHERN CALIFORNIA-OAKLAND INNER HARBOR-BRIDGE

FRUITVALE AVE RAIL BRIDGE-The lift span of the rail bridge is kept in the partially opened position providing 80 feet of vertical clearance at mean high water. The lift span has been repaired and can be raised to its fully upon position upon request from the Fruitvale Highway bridge operator. When the lift span of the railroad bridge is in the partially open position and the bascule span of the adjacent highway bridge is in the closed position, the lift span will show two red 180-degree center span lights on the upstream and downstream lower edge of the span. When the bascule span of the highway bridge is in the fully opened position, the lift span of the railroad bridge will show two 360-degree green lights, providing a range for the centerline of the channel between both highway and railroad bridges. For further information contact the Coast Guard Bridge Office at 510-437-3516.

Chart 18649

LNM: 25/23

NORTHERN CALIFORNIA-OAKLAND-MARINER OPERATIONS

The Dutra Group will be conducting marine operations for the emergency pier rehabilitation occurring at the Oakland Airport ALSF Pier from 19 April, 2024 until 7 December, 2024. A flexi Barge along with a tugboat and small skiff will be anchored near the pier along with being tied to it. The Barges will be spudded in with flashers on all corners along with all other marine equipment, the upstream and downstream corners of each barge will be lighted at night with steady burning red lights and will be monitoring VHF-FM Chan. 9, 16 & 68A. Mariners are requested to transit the area with caution. For more details or comments contact Lucas Walker at 707-378-3822.

Chart 18650

LNM: 16/24

NORTHERN CALIFORNIA-OFFSHORE HALF MOON BAY-OCEANOGRAPHIC OPERATIONS

The Scripps Institution of Oceanography research vessel SALLY RIDE (Call Sign WSAF) will conduct 24 hour surface to floor oceanographic operations between 10-19 April, 2024. The exact timing and location of each station will depend on operational concerns and weather conditions. Moorings will be deployed/recovered during the operations with a two-tone (yellow and blue), cylindrical surface buoy, marked "UCSD RESEARCH". The buoy is about 2ft tall, 2ft diameter and has a flashing amber light. Operations will be conducted in the vicinity of the following coordinates:

35-56-28N 125-03-00W

35-39-31N 124-59-00W

35-54-42N 125-02-40W

During over-the-side operations, vessel will be restricted in ability to maneuver; all traffic requested to give R/V SALLY RIDE a wide berth. R/V SALLY RIDE will monitor VHF-FM channels 13 and 16. Mariners are requested to transit the area with caution. For more details or comments contact vessel master at sr-master@ucsd.edu or Heather Galihier at 858-226-8761.

Charts: 18700 18720 18740

LNM: 15/24

NORTHERN CALIFORNIA-OFFSHORE PT MONTARA-SUVERY OPERATIONS

SAILDRONE, INC. in collaboration with NOAA's National Data Buoy Center (NDBC), is conducting surveys at 37-21-21N 122-52-51W with an Uncrewed Surface Vehicle (USV), called a "SAILDRONE EXPLORER". This vehicle will remain on station from 31 August, 2023 until 31 August, 2024. Saildrone vehicles are 23 feet in length, orange in color, have a white all around light on top of the wing and are marked "SAILDRONE". The vehicle will have limited maneuverability during survey operations. Mariners are requested to remain greater than 500 meters away from the research equipment and to transit the area with caution. For more details or comments contact Saildrone at 510-722-6070 or

NORTHERN CALIFORNIA-OFFSHORE PT MONTARA-SUVERY OPERATIONS

missioncontrol@saildrone.com.

Charts: 18680 18700

LNM: 36/23

NORTHERN CALIFORNIA-OLD RIVER-HAZARD TO NAVIGATION

The Coast Guard has received a report of downed powerlines in Old River from Mandeville Island to Webb Tract. The downed powerlines have been cut by PG&E and remain laying on the bottom of Old River. Mariners are recommended to avoid anchoring in the area and transit the area with caution. For details or comments contact Coast Guard Sector San Francisco Waterways at 510-612-9729.

Chart 18661

LNM: 01/23

NORTHERN CALIFORNIA-OYSTER COVE MARINA-BUOY DEPLOYMENT

Kilroy Realty has deployed two buoys at the entrance to Oyster Cove Marina at

37-40-03.09N 122-23-13.04W

37-40-03.05N 122-23-12.61W

Both buoys are white 36" cylinders with orange retroreflective bands and an orange diamond marked "Danger Barrier Marina Closed". Both buoys are lit at night with a yellow flashing light flashing once every 4 seconds, Fl Y4s. Between the break wall and the pier there is a white line with small floats connected to both buoys. Mariners are advised to use caution in the area to avoid entanglement. For comments or details, contact Travis Lund at 510-419-2392.

Chart 18650

LNM: 48/23

NORTHERN CALIFORNIA-PACIFICA-BUOY DEPLOYMENT

Environmental Science Associates has deployed a private aid approximately 0.85 miles offshore of the Pacifica Municipal Pier at 37-37-5N 122-30-37W for the collection of wave and water level information from 7 September, 2023 to 8 August, 2024. A 23' North River dory boat will be monitoring VHF-FM Chan. 16. For more information or comments contact, Damien Kunz at 805-252-9895.

Chart 18680

LNM: 37/23

NORTHERN CALIFORNIA-PIGEON POINT-TEMPORARY DISESTABLISHMENT

The U.S. Coast Guard has temporarily disestablished the light on Pigeon Point Light (LLNR 320) for approximately 18 months due to planned maintenance. The aid is in position 37-10-54.281N, 122-23-38.253W. Direct any questions or comments regarding this project to Roger Wykle at rwykle@sustainable-group.com or (925) 899-9721.

Chart 18022

LNM: 08/24

NORTHERN CALIFORNIA-REDWOOD CITY-DREDGE OPERATIONS

HME Construction, Inc will be conducting dredge operations in the Redwood City Shipping Channel at 37-32-51N 122-11-39W from 8 March, 2024 until 19 May, 2024, 24hrs a day. Clamshell Dredge SEAHORSE, assist boat DOUGLAS, tug ARTHUR, and 3 dump scows will be monitoring VHF-FM Chan. 13,14 and 67. All dredged materials will be disposed of at SF-11 and DODS disposal sites. Mariners are requested to transit the area with caution. For more details or comments contact Justin Bay at 360-904-2978.

Charts: 18649 18653 18680

LNM: 08/24

NORTHERN CALIFORNIA-SACRAMENTO RIVER-REDUCED VERTICAL CLEARANCE

Overhead power cables upstream of Sacramento River at 38-03-54N 121-47-09W have a reported reduced vertical clearance to 119.5'.

LNM: 22/16

NORTHERN CALIFORNIA-SAN FRANCISCO BAY-BRIDGE

RICHMOND/SAN RAFAEL BRIDGE: Two of the three white center channel lights in the west span on the south side are extinguished. For further information contact the Coast Guard Bridge Office at 510-437-3514.

Chart 18649

LNM: 16/24

NORTHERN CALIFORNIA-SAN FRANCISCO BAY-BRIDGE

WEST SPAN SAN FRANCISCO/OAKLAND BAY BRIDGE-Caltrans will be using the maintenance travelers in span A (W2) – B (W3), 8:00am to 2:00pm, 22-24 April, 2024. For the safety of navigation, the traveler can be moved with a 2-hour advance notice by calling 916-926-3920, 510-512-3164 or 510-390-4125. When in the span, the traveler reduces vertical clearance by 5 feet. For further information contact the Coast Guard Bridge Office at 510-219-4366.

Chart 18649

LNM: 16/24

NORTHERN CALIFORNIA-SAN FRANCISCO BAY-BRIDGE

WEST SPAN SAN FRANCISCO/OAKLAND BAY BRIDGE-During periods of rain, the operation of the navigation lights and fog signals on the bridge are unreliable and may be extinguished. Investigations to determine the cause of the unreliability of the lights and signals, and plans to repair, are in the works. Mariners should exercise caution when transiting the bridge until the navigation lights and fog signals are once again reliable. Report outages of the navigation lights and the fog signals to the U.S. Coast Guard at 510-219-4366.

Chart 18650

LNM: 52/23

NORTHERN CALIFORNIA-SAN FRANCISCO BAY-BRIDGE

RICHMOND-SAN RAFAEL BRIDGE-Concrete/steel repairs and cleaning of the bridge continues. Work is being conducted Monday through Friday, 0500 to 1700, until 30 April, 2024. Temporary underdeck platforms have been installed from the western shore to pier 33 and between piers 43-46 reducing vertical clearance in each span by three feet. The upstream and downstream lower edge of each temporary platform is lighted at night with steady burning red lights (see R-SR_Bridge_Temp_Platform_Lighting.pdf at the end of this notice.) Two 160' X 50' barges and one 110' X 32' barge are being used to assist in the installation of the platforms and for the blasting and painting. One barge has been secured to pier 8 and will be left on-scene, overnight, unmanned. The outboard corners of the barge at pier 8 is lighted at night with steady red lights. Barge "37" and barge "32" can be contacted on VHF-FM Ch. 16, 13 and 14. At no time will the work impede the east or west navigation spans or their auxiliary spans. For conditions at the bridge, mariners can contact the contractor at 860-904-8787 or 443-847-6286. For further information concerning this project contact the Coast Guard Bridge Office at 510-437-3515.

NORTHERN CALIFORNIA-SAN FRANCISCO BAY-BRIDGE

Chart 18653

LNM: 46/23

NORTHERN CALIFORNIA-SAN FRANCISCO BAY-BRIDGE

SAN MATEO-HAYWARD BRIDGE-Work continues on the causeway portion of the bridge, east of pier 38, 0700 to 1530, Monday through Friday, until 31 May, 2024. Various size barges will be used during the project, the largest being a 100' X 20' flexifloat barge. During the workday, barges will either be spudded down or tied to the bridge piers, no anchors or anchor line will be utilized. After regular working hours the unmanned barge will be left on-site. For the safety of navigation, the barges can be moved with one-hour advance notice. For conditions at the bridge mariners can contact Golden State Bridge, Inc., on VHF-FM Marine Radio Channels 13, 14, and 16 or by cell phone at 707-246-0725, 925-260-2104, or 925-382-7288. For more details or comments contact the Coast Guard Bridge Office at 510-437-3515.

LNM: 07/24

NORTHERN CALIFORNIA-SAN FRANCISCO BAY-BRIDGE

GOLDEN GATE BRIDGE-Three 54' temporary under deck platforms; one 425' north of the south tower; one 2,050' and one 2,175' south of the north tower have been installed at the bridge. Temporary platforms reduce vertical clearance at the bridge by no more than 14'. The bridge's maintenance travelers are in use during the project and will remain outboard of the furthest north and furthest south temporary platforms. The temporary platforms and maintenance travelers are lighted at night with all-round red lights (see PlatformLighting_GG_Bridge_20Feb24.pdf at the end of this notice). For navigational safety the maintenance travelers can be moved by contacting the Golden Gate Bridge at 415-923-2220. Work is being conducted Monday through Saturday, 0700-1700 and 2100-0500. For conditions at the bridge, mariners can contact the contractor at 415-716-0384. For more details or comments contact the Coast Guard Bridge Office at 510-437-3516.

Chart 18649

LNM: 08/24

NORTHERN CALIFORNIA-SAN FRANCISCO BAY-DETERIORATING CONCRETE PILINGS

Deteriorating concrete pilings above and below the waterline are present in the vicinity of the the south edge of Southampton Shoal Light (LLNR 5480). Mariners are requested to transit the area with caution. For more details or comments contact LT Miranda Brumbaugh at 510-437-2978 or Miranda.E.Brumbaugh@uscg.mil.

Chart 18649

LNM: 23/15

NORTHERN CALIFORNIA-SAN FRANCISCO BAY-OCEANOGRAPHIC SURVEY OPERATIONS

SAILDRONE, INC. is conducting oceanographic survey operations and will operate Unmanned Surface Vehicles called SAILDRONE EXPLORER and SAILDRONE VOYAGER until 30 June, 2024. The operations will be conducted 0.8 nm South of General Anchorage 9 in San Francisco Bay and bounded by the following coordinates:

Area 1:

37-44-30N 122-18-46W

37-43-47N 122-17-53W

37-43-16N 122-18-26W

37-44-01N 122-19-22W

Area 2:

37-42-13N 122-18-26W

37-42-41N 122-17-19W

37-41-45N 122-16-34W

37-41-11N 122-17-45W

The Saildrone Explorer is 23 feet long, 16 feet tall, painted orange with a white all-around light on top and marked SAILDRONE. The Saildrone Voyager is 33 feet long, 21 feet tall and painted orange or gray with a tri-color light on top. Saildrones will broadcast AIS and travel at a speed up to 5 knots. Mariners are requested to transit the area with caution. For more details or comments contact Saildrone Mission Control at missioncontrol@saildrone.com or 510-722-6070.

Charts: 18640 18650

LNM: 13/24

NORTHERN CALIFORNIA-SAN FRANCISCO BAY-SEASONAL DISESTABLISHMENT

The following Aids to Navigation sound signals have been seasonally disestablished in accordance with Light List Volume VI, 2021.

East Brother Light (LLNR 5865)

San Bruno Shoal Channel Light 1 (LLNR 4945)

San Bruno Shoal Light 5 (LLNR 4965)

For more details or comments contact Sector San Francisco at 415-399-7436.

LNM: 16/24

NORTHERN CALIFORNIA-SAN LEANDRO BAY-BRIDGE

BAY FARM ISLAND HIGHWAY AND PEDESTRIAN BRIDGES-The pier protection system at the bridges have deteriorated and may not offer adequate protection for the bridges as well as vessels transiting the bridge. Mariners are urged to transit both bridges with caution. The bridge owner is in the process of designing a replacement pier protection system. For more details or comments contact the Coast Guard Bridge Office at 510-437-3514.

Chart 18649

LNM: 31/22

NORTHERN CALIFORNIA-SAN LEANDRO-SUBMERGED VESSEL

A partially capsized and submerged 40 foot twin masted sailing vessel at the entrance to San Leandro Marina at approximate coordinates 37-41-40N 122-11-37W. San Leandro Public works will be contracting removal of the vessel. To report updates or request additional information please contact Sector San Francisco Waterways Management Division at SFWaterways@uscg.mil.

Chart 18650

LNM: 09/24

NORTHERN CALIFORNIA-SAN LORENZO RIVER-BRIDGE

LAUREL STREET BRIDGE- Work will resume for the installation of a new water conveyance pipeline. To conduct the work, a bucket truck on the bridge deck will be utilized to suspend a mobile platform from the side of the bridge, vertical clearance will be reduced by 6-feet. Work will take place Monday through Friday, 7:00am to 4:30pm, from 01 September, 2023 through 31 May, 2024. There will be no in-water work or equipment used during this project. Mariners are urged to use caution while transiting the bridge. For further information contact the Coast Guard Bridge Office at

NORTHERN CALIFORNIA-SAN LORENZO RIVER-BRIDGE

510-437-3515.

Chart 18685

LNM: 50/23

NORTHERN CALIFORNIA-SAN PABLO BAY-BUOY DEPLOYMENT

US Army Corp of Engineers have deployed 3 meteorological recording stations in the San Pablo Bay area in the following coordinates:

38-04-32N 122-20-41W

38-01-51N 122-18-43W

37-52-39N 122-20-22W

For more details or comments contact Justin Yee at 415-503-6788.

Chart 18654

LNM: 31/23

NORTHERN CALIFORNIA-SANTA CRUZ-HAZARDOUS AND SHOALING

The Santa Cruz Harbor federal navigation channel is shallow, with shoaling extending across the entrance. Breaking waves across the entrance may occur at all tides. Mariners are advised to use extreme caution when transiting the entrance and to check the latest sounding in-advance. The latest sounding is available on the Port District's website www.santacruzharbor.org. For more details or comments, contact LT William Harris at 415-399-7443.

Chart 18685

LNM: 05/24

NORTHERN CALIFORNIA-STEAMBOAT SLOUGH-SUBMERGED VESSEL

The Coast Guard received a report of a submerged 16' vessel north of Steamboat Slough at 38-11-21N 121-39-60W and is not visible from the waterline. There are no salvage plans at this time. Mariners are requested to transit the area with caution. For more details or comments contact USCG Sector San Francisco Waterways at 415-399-7443 or SFWaterways@uscg.mil.

Chart 18661

LNM: 09/24

NORTHERN CALIFORNIA-VENICE ISLAND LEVEE-MARINE OPERATIONS

The Dutra Group will be conducting marine operations for the emergency levee rehabilitation occurring along the west side of Venice Island levee facing the San Joaquin River from 17 April, 2024 until 31 May, 2024. The Crane Barge TM20 (dim. 50'x150') equipped with an Excavator along with a tugboat will be spudded in with flashers on all corners along with all other marine equipment and will be monitoring VHF-FM Chan. 9, 16 & 68A. Mariners are requested to transit the area with caution. For more details or comments contact Lucas Walker at 707-378-3822.

Chart 18661

LNM: 16/24

NORTHERN CALIFORNIA-PILLAR POINT-BUOY DEPLOYMENT

Sofar Ocean has deployed a research buoy approximately 1.4nm West of Pillar Point CA, in position 37-30-00.90N 122-31-57.68W. The buoy is a 15" diameter yellow sphere with a yellow light flashing every 2.5 seconds, Fl Y2.5s. For further comments or details contact Ciara Dorsay at 941-961-8543.

Chart 18680

LNM: 50/23

SOUTHERN CALIFORNIA- OFFSHORE CATALINA ISLAND- AUTONOMOUS UNDERWATER VEHICLE OPERATIONS

Boeing will be conducting autonomous underwater vehicle operations from 22 January through 30 September 2024.

OPAREA 1:

33-42-25N 118-19-55W

33-39-47N 118-21-36W

33-41-13N 118-24-40W

33-43-48N 118-22-48W

OPAREA3:

33-26-34N 118-26-55W

33-25-33N 118-23-59W

33-25-36N 118-21-19W

33-29-15N 118-18-36W

33-31-35N 118-23-31W

33-28-11N 118-26-55W

M/V AMERICAN ISLANDER will be monitoring VHF-FM Chan. 13, 14 & 16. Mariners are requested to transit the area with caution. For more details or comments, contact Sector Los Angeles/ Long Beach at 310-521-3860.

Chart 18740

LNM: 03/24

SOUTHERN CALIFORNIA- SAN LUIS HARBOR-DREDGING OPERATIONS

The U.S. Army Corps of Engineers will be conducting dredging operations from 23 February, 2024 until 31 August, 2024 at Port San Luis Harbor. A land-based crane with 50HP Toyo Submersible pump will conduct every week day during daylight hours. If the crane is next to the water, it should be assumed that dredging operations are underway. Mariners are requested to transit the area with caution. For more details or comments contact Natalie Teeter at 805-595-5431 or nataliet@portsanluis.com.

Chart 18703

LNM: 07/24

SOUTHERN CALIFORNIA-ALAMITOS BAY-ANAHEIM BAY-WATERWAYS ANALYSIS AND MANAGEMENT SYSTEM (WAMS) STUDY

The Coast Guard is conducting a Waterways Analysis and Management System (WAMS) study of the Alamos Bay and Anaheim Bay. The study focuses on the area's aids to navigation system, waterborne commerce, marine casualty information, port/harbor resources, emergency response plans, routine and emergency communication capabilities, and future development projects. Furthermore, this study seeks to obtain data on the effectiveness of the system of Aids to Navigation, as well as other waterway safety concerns. Any interested company or individual wishing to provide comments or participate in a user survey may do so via link at: <https://www.research.net/r/FZBRS7P> or contact LTJG Rubymar Sebastian at Rubymar.sebastianechevarria@uscg.mil or via phone at (571)-613-2930.

Chart 18749

LNM: 02/24

SOUTHERN CALIFORNIA-CAMP PENDELTON-BUOY DEPLOYMENT

Scripps Waverider CDIP Lighted Research Buoy 264 has been deployed 1.4 NM southwest of Red Beach, Camp Pendelton CA in position 33-17-23.8N 117-30-00.5W. The buoy is operated by Scripps Institute of Oceanography and is 3-foot diameter sphere with an attached telemetry whip antenna and a nighttime yellow color warning flashing light. The light timing sequence is a series of 5 flashes at 1-second intervals with a period of 20 seconds between each series. Visual range is one kilometer. The buoy is painted yellow and marked "Wave Buoy" with the phone number 858-534-3032. For further comments or details contact James Behrens at 858-534-3032.

Chart 18774

LNM: 43/23

SOUTHERN CALIFORNIA-CHANNEL ISLANDS TO SAN DIEGO-OCEANOGRAPHIC RESEARCH

Saildrone, INC. is conducting Uncrewed Surface Vehicle(USV) operations called SAILDRONE Voyager from 10 February, 2024 until 31 July, 2024 around the Channel Islands, Gulf of Santa Catalina, and San Diego. The SAILDRONE VOYAGER is 10 meters in length, 6.4 meters tall, gray in color, has a tricolor light on top on the wing and is marked SAILDRONE. Mariners are requested to transit the area with caution. For more details or comments, contact Saildrone Mission Control at missioncontrol@saildrone.com or 510-722-6070.

Charts: 18720 18740 18765

LNM: 06/24

SOUTHERN CALIFORNIA-DANA POINT HARBOR

ISLAND WAY BRIDGE-The northeast side red pier light is extinguished. Estimated time of repair is unknown. For further information contact the Coast Guard Bridge Office at 510-437-3515.

Chart 18746

LNM: 16/24

SOUTHERN CALIFORNIA-EL SEGUNDO-BUOY REPLACEMENT

Chevron has replaced a weather buoy in position 33-54-30N 118-27-09W with a similar yellow buoy with characteristics of a flashing yellow light every 3 seconds. Mariners are requested to transit the area with caution. For more details or comments contact Chevron at 310-615-5735 or cscsmtsmm@chevron.com.

Chart 18744

LNM: 17/23

SOUTHERN CALIFORNIA-EL SEGUNDO-DIVING OPERATION

Aqueos will be conducting diving/ROV operations from 23 October, 2023 until 30 April, 2024 offshore Ventura. The DB SALTA VERDE (WDF9705) 185' LOA black hull with a crawler crane on deck, will be in a 4-point moor 24-hours per day and will be monitoring VHF-FM Chan. 16. Operations conducted during daylight hours. Two temporary mooring will be set, and locations have been added to the survey plot map. The surface buoy will have a beacon light for additional visual reference. Mariners are requested to transit the area with caution. For more details or comments contact Jason Smith at 805-205-3156.

Chart 18744

LNM: 45/23

SOUTHERN CALIFORNIA-HUNTINGTON BEACH-MARINE CONSTRUCTION

CPS Coastal Permits, Inc. will be conducting marine construction from 24 April, 2024 until 9 May, 2024 at Huntington Beach at 33-36-58N 117-55-27W. A small 17 foot barge will be replacing a 613 sq. ft. "W" shaped floating dock. Mariners are requested to transit the area with caution. For more details or comments contact Max Jackson at 714-732-6127.

Chart 18749

LNM: 15/24

SOUTHERN CALIFORNIA-LEUCADIA STATE BEACH-BUOY DEPLOYMENT

Scripps Waverider CDIP Lighted Research Buoy 262 has been deployed 0.7 NM west of Leucadia State Beach, Encinitas CA in position 33-03-43.5N 117-18-50.7W. The buoy is operated by Scripps Institute of Oceanography and is 3-foot diameter sphere with an attached telemetry whip antenna and a nighttime yellow color warning flashing light. The light timing sequence is a series of 5 flashes at 1-second intervals with a period of 20 seconds between each series. Visual range is one kilometer. The buoy is painted yellow and marked "Wave Buoy" with the phone number 858-534-3032. For further comments or details contact James Behrens at 858-534-3032.

Chart 18774

LNM: 43/23

SOUTHERN CALIFORNIA-LONG BEACH-MARINE CONSTRUCTION

GP POLB will be conducting marine construction from 27 November, 2023 until 30 May, 2024 at 33-46-10N 118-12-45W. DB VULCAN and DB VALKYRIE will be monitoring VHF-FM Chan. 13, 16 & 66. Mariners are requested to transit the area with caution. For more details or comments contact Bryan Haynes at 562-762-5394.

Chart 18749

LNM: 47/23

SOUTHERN CALIFORNIA-LOS ANGELES-MARINE CONSTRUCTION

The Reyes/Larison Joint Venture (RLJV) will be conducting marine construction from 28 December, 2023 until 3 January, 2025 at The Port of Los Angeles Berths 168, 176-182 at 33-45-38N 118-15-40W. T/B PATCONA II/LARCONA, T/B DURANGO, DB VENTURA, DB LONG BEACH, DB LOS ANGELES, work skiffs and work barges will be monitoring VHF-FM Chan. 13 & 65. Mariners are requested to transit the area with caution. For more details or comments, contact Alex Lopez 909-270-6343.

Charts: 18746 18749

LNM: 14/24

SOUTHERN CALIFORNIA-LOS ANGELES/LONG BEACH HARBOR-BRIDGE

VINCENT THOMAS BRIDGE-A 180 ft temporary maintenance platform continues to move west from the east tower. The platform reduces vertical clearance of the bridge by 5.5 ft. It is anticipated the temporary platform will arrive at the east edge of the shipping channel in summer of 2024. The upstream and downstream corners and every 50' along the upstream and downstream side of the platform is lighted at night with steady burning red lights (see V_Thomas_Platform_Lighting1.pdf at the end of this notice). Work will take place during daylight hours, Monday through Friday. For conditions at the bridge mariners can contact 213-479-4138, 213-479-1144 or 310-261-9552. For more details or comments contact the Coast Guard Bridge Office at 510-437-3516.

Chart 18749

LNM: 30/22

SOUTHERN CALIFORNIA-MORRO BAY-MARINE CONSTRUCTION

Associated Pacific Constructors, Inc. will be conducting marine construction from 8 April, 2024 until 8 June, 2024 at Inner Harbor Morro Bay at 35-21-56N 120-51-13W during daylight hours. C/B MERI will be monitoring VHF-FM Chan. 16. Mariners are requested to transit the area with caution.

SOUTHERN CALIFORNIA-MORRO BAY-MARINE CONSTRUCTION

For more details or comments contact Associated Pacific Constructors, Inc. at 805-234-5055.

Chart 18022

LNM: 13/24

SOUTHERN CALIFORNIA-MORRO BAY-WIND ENERGY PROJECT

The Morro Bay Wind Energy Area includes the Even Keel Wind Project as one of the three leaseholders. EKW is providing their Final Fisheries Communication Plan that can be accessed at Even Keel Wind Project website <https://evenkeelwind.invenergy.com/documents> this Plan is a living document that will continue to be updated as needed. Please provide any feedback on this plan via email to Laura.Casali@stantec.com.

Chart 18700

LNM: 44/23

SOUTHERN CALIFORNIA-MORRO BAY-WIND ENERGY PROJECT

Equinor Wind US LLC, leaseholder for the Bureau of Ocean Energy Management Lease Area OCS-P 0563, has developed a Fisheries Communication Plan (FCP) which is available for public comment. The FCP overviews the plan for engagement with the region's fishing community during development of the Equinor California Offshore Wind Project. The FCP is available at www.equinorcalifornia.com. Comments on the plan, and any questions about the project, can be sent to Elizabeth Marchetti at emarc@equinor.com or 401-954-2902.

Chart 18700

LNM: 46/23

SOUTHERN CALIFORNIA-NAVAL BASE POINT LOMA-MARINE CONSTRUCTION

R.E. Staite Engineering, Inc. will be conducting marine construction from 15-22 April, 2024 at Pier 5000 at Naval Base Point Loma at 32-41-24N 117-14-06W under contract with the Department of the Navy. Vessels DB PALOMAR will be monitoring VHF-FM Chan. 16. Mariners are requested to transit the area with caution. For more details or comments contact Tory Wagoner at 619-629-9733.

Chart 18773

LNM: 12/24

SOUTHERN CALIFORNIA-NEWPORT BEACH-MARINE EVENT

Marine Event "Newport Ensenada International Yacht Race" will be taking place off Balboa Peir in Newport Beach, CA on 26 April, 2024. The event will host 175 vessels that will be transiting to one of two finish lines. One finish is in San Diego, and the second finish is in Mexico.

Special Local Regulation 33 CFR 100.1104 Table 1.1 Newport to Ensenada will be implemented as follows:

Starting area only. All waters of the Pacific Ocean near Newport Beach, CA bounded by a line starting

33-35-18N 117-53-18W

33-34-54N 117-53-18W

33-34-54N 117-54-30W

33-35-18N 117-54-30W (Returning to point of origin)

(1) No spectator shall anchor, block, loiter, nor impede the through transit of participants or official patrol vessels in the regulated areas during all applicable effective dates and times unless cleared to do so by or through an official patrol vessel.

(2) When hailed and/or signaled by an official patrol vessel, any spectator located within a regulated area during all applicable effective dates and times shall come to an immediate stop.

(3) The Patrol Commander (PATCOM) is empowered to control the movement of all vessels in the regulated area or to restrict vessels from entering the regulated area. The Patrol Commander shall be designated by the cognizant Coast Guard Sector Commander; will be a U.S. Coast Guard commissioned officer, warrant officer, or petty officer to act as the Sector Commander's official representative; and will be located aboard the lead official patrol vessel. As the Sector Commander's representative, the PATCOM may terminate the event any time it is deemed necessary for the protection of life and property. PATCOM may be reached on VHF-FM Channel 13 (156.65MHz) or 16 (156.8MHz) when required, by the call sign "PATCOM."

(4) The Patrol Commander may, upon request, allow the transit of commercial vessels through regulated areas when it is safe to do so.

(5) The Coast Guard may be assisted by other Federal, state, or local agencies.

Concern Mariners can contact the Coast Guard Waterways Manger Office by phone at 310-467-2099 or e-mail D11-SMB-SectorLALB-WWM@uscg.mil. Participating Vessels will be monitoring VHF-FM Chan. 6 & 72 during this event.

Chart 18746

LNM: 16/24

SOUTHERN CALIFORNIA-OFFSHORE CARLSBAD/SAN DIEGO-MARINE SURVEY

SubCom, LLC will be conducting a survey of proposed subsea telecommunications cable route from 30 January, 2024 until 30 April, 2024 in California coastal and marine waters west of Carlsbad and San Diego at positions:

33-07-32N 117-24-05W

33-06-07N 117-29-39W

33-05-01N 117-33-31W

33 04-22N 117-34-52W

32-56-47N 117-45-57W

32-53-22N 117-50-57W

32-51-30N 117-52-30W

32-37-34N 117-49-00W

M/V OCEAN TITAN will have limited maneuverability while conducting this operation and will be monitoring VHF-FM Chan. 13 & 16. Mariners are requested to transit the area with caution. For more details or comments, contact Daniel Marquis at 603-285-5248.

Chart 18765

LNM: 16/24

SOUTHERN CALIFORNIA-OFFSHORE HUNTINGTON BEACH-REMOTE OPERATED VEHICLE PIPELINE SURVEY

Aqueos will be conducting Remote Operated Vehicle (ROV) pipeline survey from 23-24 April, 2024 offshore Huntington Beach at 33-35-02N 118-07-49W. M/V DANNY C will perform underwater pipeline inspection work and will be monitoring VHF-FM Chan. 16. The operations will include the vessel using an underwater remote operated vehicle(ROV) "flying" the pipeline. M/V DANNY C is 100' LOA, black hull and white superstructure. Mariners are requested to transit the area with caution. For more details or comments, contact Jason Smith at 805-205-3156.

Chart 18749

LNM: 16/24

SOUTHERN CALIFORNIA-OFFSHORE LOS ANGELES-MARINE SURVEY

SubCom, LLC will be conducting a survey of proposed Subsea Telecommunications Cable Route from 25 January, 2024 until 30 April, 2024 at California coastal and marine waters west of Los Angeles at positions:

33-56-31N 118-26-30W

SOUTHERN CALIFORNIA-OFFSHORE LOS ANGELES-MARINE SURVEY

33-56-29N 118-35-18W
33-53-13N 118-42-52W
33-49-15N 119-01-36W
33-52-11N 119-18-28W
33-43-12N 119-40-38W
33-35-09N 119-47-58W
33-03-27N 120-31-34W
32-40-05N 122-03-11W
32-26-00N 123-57-52W

M/V OCEAN TITAN will have limited maneuverability while conducting this operation and will be monitoring VHF-FM Chan. 13 & 16. Mariners are requested to transit the area with caution. For more details or comments, contact Daniel Marquis at 603-285-5248.

Charts: 18020 18022

LNLM: 16/24

SOUTHERN CALIFORNIA-OFFSHORE MORRO BAY-FISHERIES COMMUNICATION PLAN AVAILABLE

Golden State Wind LLC, leaseholder for the Bureau of Ocean Energy Management Lease Area OCS-P 0564, has developed a Fisheries Communication Plan (FCP) which is available for public comment. The FCP overviews the plan for engagement with the region’s fishing community during development of the Golden State Wind Project. The FCP is available at https://www.goldenstatewind.com/wp-content/uploads/2023/09/GSW_Fisheries-Comms-Plan_2023.08.23_clean_508-compressed.pdf Comments on the plan, and any questions about the project, can be sent to Rachel Mahler at rachel.mahler@oceanwinds.com or 805-680-8138.

Chart 18703

LNLM: 45/23

SOUTHERN CALIFORNIA-OFFSHORE-HAZARDOUS OPERATIONS

There will be hazardous operations conducted in the Fleet Training Area Hot (FLETA HOT) until 1 January, 2025. Mariners are requested to transit the area with caution. For more details or comments contact Henry Rogel at 619-545-1757

A. HAZARDOUS OPERATIONS REQUEST (FLETA HOT):

(1) IN AREA BOUNDED BY:

32-33-00N 118-25-00W
32-35-00N 118-16-00W
32-35-00N 117-40-00W
31-55-00N 117-40-00W
31-55-00N 118-25-00W
32-33-00N 118-25-00W

TO POINT OF ORIGIN.

B. HAZARDOUS OPERATIONS REQUEST (SOAR):

(1) IN AREA BOUNDED BY:

32-52-42N 119-11-58W
33-08-04N 118-52-05W
33-08-04N 118-46-02W
33-03-52N 118-41-48W
33-02-32N 118-43-33W
32-58-53N 118-43-31W
32-47-40N 118-32-21W
32-36-55N 118-45-00W
32-36-55N 118-56-57W

TO POINT OF ORIGIN.

C. HAZARDOUS OPS REQUEST (SHOBA WITH BOTH EXTENSIONS):

(1) AREA BOUNDED BY FOLLOWING COORDS:

32-55-00 N 118-25-00 W
32-55-00 N 118-15-00 W
32-40-00 N 118-15-00 W
32-40-00 N 118-35-00 W
32-45-00 N 118-35-00 W

TO POINT OF ORIGIN.

D. HAZARDOUS OPERATIONS REQUEST (MOORED BUOYS IN PYRAMID COVE)

(1) IN AREA BOUNDED BY:

ANCHOR 1: 15FT, 32-47-38N 118-25-49W
ANCHOR 2: 15FT, 32-47-24N 118-25-12W
ANCHOR 3: 20FT, 32-47-36N 118-24-53W
ANCHOR 4: 20FT, 32-47-11N 118-25-26W
ANCHOR 5: 25FT, 32-47-19N 118-25-00W
ANCHOR 6: 30FT, 32-47-07N 118-24-51W
ANCHOR 7: 210FT, 32-47-24N 118-24-27W
ANCHOR 8: 170FT, 32-47-24N 118-25-59W
ANCHOR 9: 243FT, 32-47-19N 118-24-27W
ANCHOR 10: 227FT, 32-47-19N 118-25-59W
ANCHOR 11: 00FT, 32-47-45N 118-24-18W
ANCHOR 12: 00FT, 32-46-56N 118-24-18W
ANCHOR 13: 00FT, 32-46-56N 118-26-13W
ANCHOR 14: 00FT, 32-47-45N 118-26-13W.

Charts: 18700 18720 18740

LNLM: 01/24

SOUTHERN CALIFORNIA-OFFSHORE-HAZARDOUS OPERATIONS LIVE FIRE

There will be hazardous operations conducted in the Fleet Training Areas (FLETA HOT, SOAR, and SHOBA WITH BOTH EXTENSIONS) until 1 January, 2025. Mariners are requested to stay clear of these areas. The hazardous operations include live fire. For more details or comments contact Darrel Rumsey at 619-545-1744 or Henry Rogel at 619-545-1757.

SOUTHERN CALIFORNIA-OFFSHORE-HAZARDOUS OPERATIONS LIVE FIRE

A. HAZARDOUS OPERATIONS REQUEST (FLETA HOT FOR LIVE FIRE):

- (1) IN AREA BOUNDED BY:
 - 32-33-00N 118-25-00W
 - 32-35-00N 118-16-00W
 - 32-35-00N 117-4-000W
 - 31-55-00N 117-40-00W
 - 31-55-00N 118-25-00W
 - 32-33-00N 118-25-00W (TO POINT OF ORIGIN).

B. HAZARDOUS OPERATIONS REQUEST (SOAR FOR LIVE FIRE)

- (1) IN AREA BOUNDED BY:

- 32-52-42N 119-11-58W
- 33-08-04N 118-52-05W
- 33-08-04N 118-46-02W
- 33-03-52N 118-41-48W
- 33-02-32N 118-43-33W
- 32-58-53N 118-43-31W
- 32-47-40N 118-32-21W
- 32-36-55N 118-45-00W

32-36-55N 118-56-57W (TO POINT OF ORIGIN).

C. HAZARDOUS OPS REQUEST (SHOBA WITH BOTH EXTENSIONS FOR LIVE FIRE):

- (1) AREA BOUNDED BY FOLLOWING COORDS:

- 32-55-00N 118-25-00W
- 32-55-00N 118-15-00W
- 32-40-00N 118-15-00W
- 32-40-00N 118-35-00W
- 32-45-00N 118-35-00W (TO POINT OF ORIGIN).

D. HAZARDOUS OPS REQUEST (PYRAMID COVE FOR MOORED BUOYS)

- (1) AREA BOUNDED BY FOLLOWING COORDS:

| DEPTH | LAT | LONG |
|------------|------------------|------------|
| ANCHOR 1: | 15FT- 32-47-38N | 118-25-49W |
| ANCHOR 2: | 15FT- 32-47-24N | 118-25-12W |
| ANCHOR 3: | 20FT- 32-47-36N | 118-24-53W |
| ANCHOR 4: | 20FT- 32-47-11N | 118-25-26W |
| ANCHOR 5: | 25FT- 32-47-19N | 118-25-00W |
| ANCHOR 6: | 30FT- 32-47-07N | 118-24-51W |
| ANCHOR 7: | 210FT- 32-47-24N | 118-24-27W |
| ANCHOR 8: | 170FT- 32-47-24N | 118-25-59W |
| ANCHOR 9: | 243FT- 32-47-19N | 118-24-27W |
| ANCHOR 10: | 227FT- 32-47-19N | 118-25-59W |
| ANCHOR 11: | 00FT- 32-47-45N | 118-24-18W |
| ANCHOR 12: | 00FT- 32-46-56N | 118-24-18W |
| ANCHOR 13: | 00FT- 32-46-56N | 118-26-13W |
| ANCHOR 14: | 00FT- 32-47-45N | 118-26-13W |

Charts: 18020 18720 18740

LNM: 05/24

SOUTHERN CALIFORNIA-OFFSHORE-SURVEY OPERATIONS

Atlas Wind will be conducting geophysical and geotechnical surveys until 01 December, 2024, offshore of the Morro Bay Area and within the Equinor Offshore Wind Lease Area (OCS-P 0563). Operations will be bounded by the following coordinates or see enclosure ATLAS-SURVEY OPERATIONS.pdf below:

- 35-47-56N 122-09-23W
- 35-07-05N 121-39-32W
- 35-06-45N 120-37-53W
- 35-33-17N 121-07-01W
- 35-33-13N 121-32-11W
- 35-47-56N 122-09-23W

Surveys will occur within the Lease Area and along areas inshore of the Lease within potential submarine export cable sitting corridors. These potential submarine export cable sitting corridors will be narrow areas that are up to 6,562 feet (2,000 meters) wide and will connect the Lease Area and potential cable landfall locations. During the survey the M/V Island Pride and R/V Taku will be deploying subsurface survey equipment along the route corridor and in the Lease Area (OCS-P 0563) and will be restricted in their ability to maneuver. M/V ISLAND PRIDE and R/V TAKU will be monitoring VHF-FM Chan. 16. Mariners are requested to transit the area with caution. For more details or comments contact Matthew Moulton at 1-805-236-0756.

Charts: 18700 18720 18740

LNM: 15/24

SOUTHERN CALIFORNIA-PISMO BEACH-MARINE OPERATIONS

Orange Marine will be conducting marine fiber optic cable Installation off of Grover Beach from 19 March, 2024 until 1 July, 2024. Installation operations will be conducted by Cable Ship Rene Descartes. For cable locations see enclosure "Local Notice to Mariners JUNO Subsea Fiber Optic Cable Mar2024.pdf". Fishermen are requested to remove all fishing lines or traps within one nautical mile on either side of the coordinates located on the enclosure. Mariners are requested to transit the area with caution. For more details or comments contact Chris Brungardt at 916-949-9141.

Charts: 18700 18720

LNM: 07/24

SOUTHERN CALIFORNIA-POINT LOMA-MARINE CONSTRUCTION

R.E. Staite Engineering, Inc. will be conducting marine construction from 26 February, 2024 until 30 September, 2024 at Naval Base Point Loma at 32-42-12N 117-14-05W. A Floating Crane Barge, Push Boat JEANIE R, Work Boat JOHN DRAKE and skiffs will be monitoring VHF-FM Chan. 16. Mariners are requested to transit the area with caution. For more details or comments contact R.E. Staite Engineering, Inc. at 619-629-9733 or restaite@restaite.net.

SOUTHERN CALIFORNIA-POINT LOMA-MARINE CONSTRUCTION

Chart 18773

LNM: 07/24

SOUTHERN CALIFORNIA-REDONDO BEACH-DREDGING OPERATION

Manson Construction Co. will be conducting harbor maintenance dredging from 15 April, 2024 until 21 June, 2024 at 33-12-36N 117-24-07W at Oceanside Harbor Main Channel and Entrance Channel 24 hours a day, 7 days a week. Material will be transported through floating pipeline, submerged pipeline, and shore pipeline to the disposal area at North Coast Village, Surfriider Way, and Oceanside Pier. Dredge HR MORRIS, DB FREYA, Dredge Tender PUP, Dredge Tender CUB, Survey Boat RUSTLER will be monitoring VHF-FM Chan. 16 & 67. Mariners are requested to transit the area with caution. For more details or comments contact Max Oviedo at 206-619-7729.

Chart 18758

LNM: 15/24

SOUTHERN CALIFORNIA-SAN DIEGO BAY-BRIDGE

CORONADO BAY BRIDGE MAINTENANCE-Scaffolding installed between piers 11-12, 12-13, and 13-14, reduces vertical clearance by no more than 8'. The upstream and downstream lower edges of the scaffolding are lighted at night with red lights. For more details or comments contact the Coast Guard Bridge Office at 510-437-3461.

Charts: 18772 18773

LNM: 13/20

SOUTHERN CALIFORNIA-SAN DIEGO BAY-CONSTRUCTION PROJECT

Marathon Construction Corporation will be conducting marine construction on damaged pilings, replacing floating docks and gangways, conducting dive operations, and installing electrical and mechanical utilities from 22 February, 2024 until 31 January, 2025 at Naval Amphibious Base Coronado, Piers 3, 17 and 21 at 32-40-50N 117-09-27W. Work will be performed mostly from a 60' X 120' crane barge, skiffs, and floating docks and will be monitoring VHF-FM Chan. 16. Mariners are requested to transit the area with caution. For more information or comments contact Timothy Meyer at 619-843-8975.

Charts: 18741 18765 18773

LNM: 07/24

SOUTHERN CALIFORNIA-SAN DIEGO BAY-MARINE CONSTRUCTION

R.E. Staite Engineering, Inc. will be conducting marine construction from 1 April, 2024 until 31 December, 2024 at BAE Systems San Diego facility, Pier 1, Pier 3 and Building 13 Wharf at 32-41-24N 117-08-41W. Vessel Spud Crane Barge RES 150, P/B JEANIE R, support barges, and skiffs will be monitoring VHF-FM Chan. 16. Mariners are requested to transit the area with caution. For more details or comments contact R.E. Staite Engineering, Inc. at 619-538-2761 or restaite@restaite.net.

Chart 18773

LNM: 09/24

SOUTHERN CALIFORNIA-SAN DIEGO BAY-MARINE CONSTRUCTION

Marathon Construction will be conducting marine construction at Naval Base Coronado from 4 January, 2024 until 31 March 2025 at 32-41-43N 117-13-51W. Mariners are requested to transit the area with caution. For more details or comments contact Dane Kost at 619-244-5522.

Chart 18765

LNM: 51/23

SOUTHERN CALIFORNIA-SAN DIEGO BAY-MARINE CONSTRUCTION

R.E. Staite Engineering, Inc. will be conducting marine construction from 1 April, 2024 until 25 June, 2025 at the Drydock and adjacent area in San Diego Bay at the NASSCO waterfront facility 32-41-15N 117-08-24W. Vessels DB POINT LOMA, DB WILLIAM F, DB PALOMAR, RES 180, SCOW HAROLD M, SCOW CLARENCE D, SCOW ROB P, SCOW MIKE J, P/B JEANIE R, C/B JOHN DRAKE, RES SURVEY BOAT, TUG CUYAMACA, and various barges (80', 110' and 120') will be performing dredging and construction operations and will be monitoring VHF-FM Chan. 16. Mariners are requested to transit the area with caution. For more details or comments contact R.E. Staite Engineering at 619-233-0175.

Chart 18773

LNM: 12/24

SOUTHERN CALIFORNIA-SAN DIEGO BAY-MARINE EVENT

San Diego Yacht Club will be sponsoring the SDYC Opening Day race on April 20, 2024, from 11:00am to 4:00pm around San Diego Bay. The event will consist of 50 sailboats participating in a regatta around San Diego Bay. Mariners are requested to transit the area with caution. For more details or comments contact Jeff Johnson at 619-933-9922.

Chart 18773

LNM: 14/24

SOUTHERN CALIFORNIA-SAN DIEGO BAY-NAVY ESTUARY

NORTH HARBOR DRIVE BRIDGE-The north side red pier lights are extinguished. The south side green center channel light is dim and difficult to see. NIMITZ PEDESTRIAN BRIDGE-The north side red pier light at pier 3 on the west side of the channel is extinguished. Estimated time of repair is unknown. For further information contact the Coast Guard Bridge Office at 510-437-3514.

Chart 18773

LNM: 08/24

SOUTHERN CALIFORNIA-SAN DIEGO-MARINE CONSTRUCTION

R.E. Staite Engineering Inc. will be conducting marine construction at Wharf 4 at the Continental Maritime of San Diego, LLC from 15 February, 2024 until 30 April, 2024 at 32-41-42N 117-08-58W. The RES 150 Spud Crane Barge, Floating Crane Barge, P/B JEANIE R, and crew boat JOHN DRAKE will be monitoring VHF-FM Chan. 16. Mariners are requested to transit the area with caution. For more details or comments contact Kristin Joseph at 619-233-0178 or restaite@restaite.net.

Chart 18773

LNM: 06/24

SOUTHERN CALIFORNIA-SAN DIEGO-MARINE CONSTRUCTION

R.E. Staite Engineering Inc. will be conducting marine construction associated with a quaywall that is located between the Naval Base Point Loma Fluel Pier and Pier 122 in San Diego from 18 September, 2023 until 24 April, 2024 at 32-42-00N 117-14-19W. Vessels JEANIE R, flexi floats and various work boats will be monitoring VHF-FM Chan. 16. Mariners are requested to transit the area with caution. For more details or comments contact R.E. Staite Engineering, Inc. at 619-233-0178 or restaite@restaite.net.

Chart 18773

LNM: 37/23

SOUTHERN CALIFORNIA-SAN DIEGO-MARINE CONSTRUCTION

R.E. Staite Engineering Inc. will be conducting marine construction for the repair and replacement of the existing Pier 302 at Naval Base Pt. Loma

SOUTHERN CALIFORNIA-SAN DIEGO-MARINE CONSTRUCTION

from 2 January, 2024 until 2 January, 2025 at 32-42-08N 117-14-09W. DB WILLIAM F, PB JEANIE R, PB JOHN DRAKE, RES 180 Barge, spud/crane barge and support barge RES 110 will be monitoring VHF-FM Chan. 16. Mariners are requested to transit at their slowest safe speed to minimize wake transit the area with caution. For more details or comments contact Tory Wagoner at 619-629-9733 or restaite@restaite.net.

Chart 18773

LNM: 50/23

SOUTHERN CALIFORNIA-SAN DIEGO-MARINE EVENT

The Cortez Racing Association will be sponsoring the CRA Tribute Regatta on 13 April, 2024, between 10:00am until 5:00pm in North San Diego Bay. The event will involve two sailboat races with six different divisions in Harbor Island, North San Diego Bay. Mariners are requested to transit the area with caution. For more details or comments contact Collen Cooke-Salas at 619-852-5010.

Chart 18773

LNM: 14/24

SOUTHERN CALIFORNIA-SAN DIEGO-MARINE EVENT

The San Diego Yacht Club will be sponsoring the One Design Weekend Monthly Series in Coronado Roads, CA. 25 sailing vessels will be racing on courses starting at approximately 32-38-41N 117-11-35W with courses oriented 1.5 nautical miles into the wind direction. Races will be held on April, 18-19 May, 8 June, 20 July, 10-11 August, 28-29 September, 12-13 October, 16-17 November, and 15 December, 2024, from 11:00am to 4:00pm each day. Mariners are requested to transit the area with caution. For more details or comments, contact Jeff Johnson at 619-933-9922.

Chart 18773

LNM: 48/23

SOUTHERN CALIFORNIA-SAN DIEGO-OCEANOGRAPHIC BUOY DEPLOYMENT

The City of San Diego Marine Biology Lab is conducting year-round monitoring with oceanographic buoys in the vicinity of the South Bay Ocean Outfall and Point Loma Ocean Outfall until December, 2024. Surface buoys are yellow and lighted equipped with AIS and run from ocean surface to ocean bottom. The Ocean Monitoring Program has two oceanographic moorings deployed at 32-40-12N 117-19-29W and 32-31-55N 117-11-13W. The M/V OCEANUS AND M/V MONITOR III when in the area will monitor VHF-FM Chan. 16. Mariners are requested to transit the area with caution. For more details or comments contact Adriano Feit at 619-758-2377 or 858-882-7055.

Charts: 18765 18772

LNM: 01/24

SOUTHERN CALIFORNIA-SAN DIEGO-OCEANOGRAPHIC SURVEY

The City of San Diego Marine Biology Lab is conducting year-round ocean monitoring sampling in the vicinity of the South Bay Ocean Outfall and Point Loma Ocean Outfall until 15 November, 2024. The Ocean Monitoring Program conducts trawl sampling, benthic sampling with a double Van Veen sediment grab, vertical CTD casts and horizontal tows with an undulating underwater vehicle, ROV surveys and multiple moorings are deployed in the region below. Ocean sampling will be conducted in an area bound by the following coordinates:

32-31-54N 117-11-11W

32-32-10N 117-11-57W

32-32-03N 117-12-06W

32-32-33N 117-11-56W

32-40-10N 117-19-22W

32-40-04N 117-19-34W

32-39-37N 117-19-32W

32-39-56N 117-19-39W

32-40-10N 117-16-55W

The M/V OCEANUS AND M/V MONITOR III when in the area will monitor VHF-FM Chan. 16. Mariners are requested to transit the area with caution. For more details or comments contact Adriano Feit at 619-758-2377 or 858-882-7055.

Charts: 18765 18772

LNM: 47/23

SOUTHERN CALIFORNIA-SAN DIEGO-ZUNIGA POINT-SUNKEN VESSEL

The Coast Guard has received a report of a sunken 25-foot sailing vessel near Zuniga Point at 32-39-48N 117-11-30W. Mariners are requested to transit the area with caution. For more details or comments, contact Coast Guard Sector San Diego at 619-278-7031.

Chart 18773

LNM: 49/23

SOUTHERN CALIFORNIA-SAN JOSE CREEK-GOLETA SLOUGH-BRIDGE

STATE ROUTE 217 HIGHWAY BRIDGE REPLACEMENT- Caltrans has cleared the waterway of in-water construction during the winter 2023-2024. The bird exclusion netting remains in place at the bridge. For more information, contact the Coast Guard Bridge Office at 510-437-3461.

Chart 18720

LNM: 46/23

SOUTHERN CALIFORNIA-SAN MATEO PT.-BUOY DEPLOYMENT

A Waverider buoy has been deployed 5 NM southwest of San Mateo Pt. in position 33-20-11N 117-39-31W. The buoy was deployed on 26 May, 2023. The buoy is operated by Scripps Institute of Oceanography and is 3-foot diameter sphere with an attached telemetry whip antenna and a nighttime yellow color warning flashing light. The light timing sequence is a series of 5 flashes at 1-second intervals with a period of 20 seconds between each series. Visual range is one kilometer. The buoy is painted yellow and marked "Wave Buoy" with the phone number 858-534-3032. For further comments or details contact Vicki Kellis at 858-534-3032.

Chart 18774

LNM: 23/23

SOUTHERN CALIFORNIA-SAN NICHOLAS ISLAND-ATMOSPHERIC BUOY DEPLOYMENT

Naval Air Systems Command has deployed an atmospheric sampling buoy 1.5 miles Northeast of San Nicholas Island at 33-18-00N 119-30-55W. The yellow buoy FI Y 3s, is 6 feet above the waterline and 2 feet in diameter. Mariners are requested to transit the area with caution. For more details or comments contact Kyle Edwards at 805-989-0672.

Chart 18720

LNM: 39/22

SOUTHERN CALIFORNIA-SAN NICHOLAS ISLAND-COMMERCIAL FISHING OPERATIONS

Ventura County Commercial Fishermen's Association member vessels will be operating within a 35 mile radius of San Nicholas Island between January 01, 2024 and June 15, 2024. Vessels can be expected in this area anytime wind and sea state is at a Beauford Scale of 4 or less. Gear will be marked with a flagged highflyer, radar reflector, lights and bouys. Please give a closest point of approach of 1/2 mile. Vessels can be contacted

SOUTHERN CALIFORNIA-SAN NICHOLAS ISLAND-COMMERCIAL FISHING OPERATIONS

on VHF-FM Chan. 11 and 16. Mariners are requested to transit the area with caution. For more details and comments contact 805-448-4455.

Chart 18022

LNM: 42/23

SOUTHERN CALIFORNIA-SANTA BARBARA HARBOR-DREDGING OPERATIONS

Pacific Dredge & Construction will be conducting dredging operations at Santa Barbara Harbor from 29 March, 2024 until 20 April, 2024 at 34-24-33N 119-41-18W. Anchor Boat SCULLARD and Cutter-Head Dredge SANDPIPER will be monitoring CHF-FM Chan. 6 & 16 and will be working at various points of the main channel in Santa Barbara Harbor and will be connected to a floating pipeline which may be up to 4,000' long. A high voltage power cable connects the dredge to the shore. Mariners are requested to transit the area with caution. For more details or comments contact Gary Foster at 805-331-2995.

Chart 18725

LNM: 13/24

SOUTHERN CALIFORNIA-SANTA BARBARA-AQUACULTURE ESTABLISHMENT

Ocean Rainforest will be establishing an Aquafarm, starting on 30 March, 2023, located 4.3 NM South of Santa Barbara. The site is bound within four yellow boundary marker buoys with a flashing yellow light every 2 seconds (Fl Y2s) in the following positions:

34-19-58.53N 119-42-45.72W

34-20-10.12N 119-42-45.72W

34-20-11.23N 119-42-07.24W

34-19-59.64N 119-42-07.92W

In line with the outer boundary buoys are small unlit floats that are marking the anchors associated with the Aquaculture area, the total buoys marking the anchors are 12 on the long axis of each side and 2 between the corner buoys on the short axis. Within the boundary markers will be 188 buoys/floats, see Enclosure AQUACULTURE ESTABLISHMENT.pdf enclosure below. The interior buoys of the aquaculture are in the shape of a rectangle with the outer edge marked with yellow buoys, every other buoy has a flashing yellow light flashing every 2 seconds (Fl Y2s). Within the rectangle are 135 small unlit floats marking the cultivation lines. Mariners are advised to remain clear of this area as entanglement with associated equipment may occur. Vessel DANNY C will be conducting the deployment and monitoring VHF-FM Chan. 7 and 16. For more details or comments contact Ocean Rainforest Inc at 805-722-9601 or eliza@oceanrainforest.com.

Charts: 18720 18725

LNM: 11/23

SOUTHERN CALIFORNIA-SILVER STRAND TRAINING COMPLEX -WAVE GLIDER DATA COLLECTION OPERATIONS

The Naval Information Warfare Systems Center (NIWC) Pacific will be conducting surface operations off the coast of Silver Strand Training Complex, CA between 22 April, 2024 until 3 May, 2024 within the following positions:

32-38-04N 117-12-02W

32-37-17N 117-11-18W

32-36-49N 117-11-59W

32-37-35N 117-12-43W

NIWC-Pacific will be conducting Daytime autonomous, unmanned maritime vehicle operations of five Liquid Robotics, Inc. Wave Gliders. Operations consist of scientific ocean and weather data collection. The Wave Glider carries no fuel, lubricants, or hydrocarbons. It is wave powered and remotely attended from NIWC-Pacific, moving at speeds of 1kt. It is approximately 9.5' x 3' (surfboard size), blue in color, with a contact plaque and one mast extending 1 meter above the water surface. Mariners are requested to transit the area with caution. For more details or comments contact, Michael Koppi at 619-341-2497 or Email at Michael.r.koppi.civ@us.navy.mil or Colin Fera at 619-226-5066 or Email at colin.j.fera.civ@us.navy.mil.

Charts: 18765 18772

LNM: 16/24

SOUTHERN CALIFORNIA-SOLANA BEACH-DREDGING OPERATIONS

Manson Construction Co. will be conducting dredging operations from 8 March, 2024 until 20 April, 2024 7 days a week, 24 hours a day at 32-58-15N 117-16-49W and 33-02-30N 117-18-06W. DB BAYPORT, M/V JOHN M, and TB TERRI L. BRUSCO will be monitoring VHF-FM Chan. 13, 16, 66 & 67. A pump ashore buoy located offshore of the beach, hookup, and pump the load onto the beach. The pump ashore buoy is attached to approximately 400 feet of floating pipe. Which is attached to 2,200 feet of submerged steel pipeline. Stand-up danger buoys are attached to the submerged pipeline at 400 ft. intervals from the first 1000 ft. of pipeline, extending offshore. Mariners are requested to transit the area with caution. For more details or comments contact Colby Towle at 904-763-4476.

Chart 18774

LNM: 15/24

SOUTHERN CALIFORNIA-VANDENBERG AFB-HAZARDOUS OPERATIONS

Hazardous operations will be conducted from Vandenberg SFB, CA for Western Range operation W4202 from 11:00am on 17 April, 2024 until 12:24pm on 21 April, 2024. Hazardous operation areas are bounded by the following coordinates:

Hazard Area A:

34-42-00N 120-43-00W

34-42-00N 120-28-00W

34-30-00N 120-28-00W

33-41-00N 120-53-00W

31-26-00N 121-51-00W

31-15-00N 122-04-00W

31-15-00N 122-34-00W

31-45-00N 122-37-00W

32-01-00N 122-24-00W

33-51-00N 121-11-00W

34-42-00N 120-43-00W(CLOSING THE FIRST POINT)

Mariners are advised to remain clear of these areas for the duration of operations. For more details or comments contact Vandenberg AFB at 805-606-8825 or on VHF-FM Chan. 06 or 16.

Charts: 18680 18700 18720 18740

LNM: 16/24

SOUTHERN CALIFORNIA-VENTURA HARBOR-DREDGING OPERATIONS

Manson Construction Co. and The U.S. Army Corps of Engineers will be conducting dredging operations from 8 March, 2024 until 25 April, 2024 at Ventura Harbor with operations 24 hours a day, 7 days a week at 34-14-44N 119-16-18W. Dredge HR MORRIS, DB FREYA, Dredge Tender PUP, Dredge Tender CUB and SB RUSTLER will be monitoring VHF-FM Chan. 16 & 67. Mariners are requested to transit the area with caution. For more

SOUTHERN CALIFORNIA-VENTURA HARBOR-DREDGING OPERATIONS

details or comments contact Manson Construction Co. at 562-983-2340.

Chart 18725

LNM: 09/24

SOUTHERN CALIFORNIA-VENTURA-MARINE CONSTRUCTION

The Ventura Yacht Club will be conducting marine construction to the existing outer row of docks at 34-14-43N 119-15-52W. Construction will take place during daylight hours only from 17 April, 2024 until 30 June, 2024. Crane Barge STEVEN J along with two work boats will be monitoring VHF-FM Chan. 16. Mariners are requested to transit the area with caution. For more details or comments contact Chad Lucas at 707-430-3565.

Chart 18725

LNM: 15/24

SOUTHERN CALIFORNIA-OFFSHORE SAN DIEGO-OCEANOGRAPHIC OPERATIONS

The Scripps Institution of Oceanography research vessel ROBERT GORDON SPROUL (Call Sign WSQ-2674) will conduct surface to floor oceanographic operations on 23 April, 2024 in the vicinity of San Diego and bounded by the following coordinates:

- 32-40-48N 117-23-36W
- 32-43-22N 117-22-00W
- 32-44-17N 117-27-00W
- 32-47-44N 117-25-03W
- 32-45-36N 117-34-39W
- 32-38-54N 117-29-48W
- 32-39-06N 117-22-38W

The exact timing and location of each station will depend on operational concerns and weather conditions. During over-the-side operations, vessel will be restricted in ability to maneuver; all traffic requested to give ROBERT GORDON SPROUL a wide berth. ROBERT GORDON SPROUL will monitor VHF-FM chan. 13 & 16. Mariners are requested to transit the area with caution. For more comments or details contact vessel master at Heather Galiher at 858-226-8761.

Chart 18765

LNM: 16/24

SOUTHERN CALIFORNIA-OFFSHORE SAN DIEGO-OCEANOGRAPHIC OPERATIONS

The Scripps Institution of Oceanography research vessel ROBERT GORDON SPROUL (Call Sign WSQ-2674) will conduct surface to floor oceanographic operations on 25 April, 2024 in the vicinity of San Diego and bounded by the following coordinates:

- 32-40-48N 117-23-36W
- 32-43-22N 117-22-00W
- 32-44-17N 117-27-00W
- 32-47-44N 117-25-03W
- 32-45-36N 117-34-39W
- 32-38-54N 117-29-48W
- 32-39-06N 117-22-38W

The exact timing and location of each station will depend on operational concerns and weather conditions. During over-the-side operations, vessel will be restricted in ability to maneuver; all traffic requested to give ROBERT GORDON SPROUL a wide berth. ROBERT GORDON SPROUL will monitor VHF-FM chan. 13 & 16. Mariners are requested to transit the area with caution. For more comments or details contact vessel master at Heather Galiher at 858-226-8761.

Chart 18765

LNM: 16/24

SOUTHERN CALIFORNIA-OFFSHORE SAN DIEGO-OCEANOGRAPHIC OPERATIONS

The Scripps Institution of Oceanography research vessel ROBERT GORDON SPROUL (Call Sign WSQ-2674) will conduct surface to floor oceanographic operations on 27 April, 2024 in the vicinity of San Diego and bounded by the following coordinates:

- 32-40-48N 117-23-36W
- 32-43-22N 117-22-00W
- 32-44-17N 117-27-00W
- 32-47-44N 117-25-03W
- 32-45-36N 117-34-39W
- 32-38-54N 117-29-48W
- 32-39-06N 117-22-38W

The exact timing and location of each station will depend on operational concerns and weather conditions. During over-the-side operations, vessel will be restricted in ability to maneuver; all traffic requested to give ROBERT GORDON SPROUL a wide berth. ROBERT GORDON SPROUL will monitor VHF-FM chan. 13 & 16. Mariners are requested to transit the area with caution. For more comments or details contact vessel master at Heather Galiher at 858-226-8761.

Chart 18765

LNM: 16/24

SOUTHERN CALIFORNIA-SAN DIEGO-RESEARCH BUOY DEPLOYMENT

Ocean Power Technologies is deploying a 3.5m yellow research buoy 22-25 April, 2024 offshore San Diego in position 32-35-20N 117-53-41W with three buoys attached to the center buoy supporting it's mooring. Each of the buoys are lit, center buoy Fl Y 2s and the three surrounding buoys Fl Y 4s. M/V LOREN and M/V SARAH will be conducting the buoy deployment and will be monitoring VHF-FM Chan. 16. Due to the complexity of the deployment mariners are advised to stay clear. For further comments or details contact Cyrus Getts at 305-766-7773.

Charts: 18740 18765

LNM: 12/24

UNITED STATES COAST GUARD-NAVCEN-SURVEY

We are eager to understand the primary reason for your visit to the Navigation Center website and how you use it, whether for recreational boating, professional purposes, data requests, educational reasons, or otherwise. Your feedback on the website's ease of use, ability to find information, and if it's your primary source for navigation-related information is crucial. We are committed to improving your experience and welcome any suggestions to enhance the site's usability, information accessibility, and overall efficiency. Your insights are invaluable in helping us better meet your navigation needs. Navigation Center Website Feedback Survey (surveymonkey.com)

LNM: 15/24

SECTION VIII - LIGHT LIST CORRECTIONS

An Asterisk *, indicates the column in which a correction has been made to new information

| (1) No. | (2) Name and Location | (3) Position | (4) Characteristic | (5) Height | (6) Range | (7) Structure | (8) Remarks |
|------------|--------------------------|-----------------|-----------------------|---------------|--------------|------------------|----------------|
|------------|--------------------------|-----------------|-----------------------|---------------|--------------|------------------|----------------|

None

PUBLICATION CORRECTIONS**None**

ENCLOSURES**REPORT OF DELAY AT DRAWBRIDGE**[Delay_Report_11-2017.pdf](#)

Use link above to Report a Delay at a Drawbridge.

LNM: 06/07

NORTHERN CALIFORNIA-DELTA & RIVERS-OLD RIVER-BRIDGE[BNSF_OldRiver_Barge_Lighting01.pdf](#)

See link above for typical barge lighting and location during fender work.

LNM: 13/24

NORTHERN CALIFORNIA-DELTA & RIVERS-AMERICAN RIVER-BRIDGE[AmRiv_SiltCurtain_BargeLocation.pdf](#)

CAPITAL CITY HWY (ROUTE 51) BRIDGE-See link above for barge and silt curtain locations.

LNM: 22/22

NORTHERN CALIFORNIA-SAN FRANCISCO BAY-BRIDGE[PlatformLighting_GG_Bridge_20Feb24.pdf](#)

GOLDEN GATE BRIDGE-Temporary Platform Location and Lighting revised 20 Feb 24.

LNM: 08/24

NORTHERN CALIFORNIA-SAN FRANCISCO BAY-BRIDGE[R-SR_Bridge_Temp_Platform_Lighting.pdf](#)

RICHMOND-SAN RAFAEL BRIDGE- See link above for temporary underdeck platform lighting for concrete and steel repairs.

LNM: 48/21

NORTHERN CALIFORNIA-DELTA & RIVERS-SACRAMENTO RIVER-BRIDGE[ButteConstructionLightng-BuoyLine.pdf](#)

REPLACEMENT BUTTE CITY BRIDGE-See link above for temporary construction trestle and lighting and proposed buoy line..

LNM: 36/22

NORTHERN CALIFORNIA-DELTA & RIVERS-SAN JOAQUIN RIVER-BRIDGE[TemporaryBridge_FalseworkLighting.pdf](#)

CROWS LANDING REPLACEMENT-See link above for temporary falsework, temporary bridge, the temporary navigation channel during construction with navigation lighting plan.

LNM: 36/22

SOUTHERN CALIFORNIA-SANTA BARBARA-AQUACULTURE ESTABLISHMENT[AQUACULTURE ESTABLISHMENT.png](#)

see link above.

LNM: 03/23

CALIFORNIA - SANTA BARBARA - TRAFFIC SEPARATION (TSS) EXTENDED[TSS_Circ.78.pdf](#)

See link above.

LNM: 21/23

SOUTHERN CALIFORNIA - CHANNEL ISLANDS - AREA TO BE AVOIDED (ATBA) ENLARGED

[ATBA_Circ.342.pdf](#)

See link above.

LNM: 21/23

CALIFORNIA - SANTA BARBARA TSS AND CHANNEL ISLANDS ATBA GRAPHIC

[new-protections.jpg](#)

See link above.

LNM: 21/23

CALIFORNIA-CALIFORNIA COAST-VOLUNTARY VESSEL SPEED REDUCTION

[2024 NOAA USCG EPA VSR Announcement.pdf](#)

See link above.

LNM: 16/24

SOUTHERN CALIFORNIA-PISMO BEACH-MARINE OPERATIONS

[JUNO Subsea Fiber OpCab.pdf](#)

See link above

LNM: 07/24

SOUTHERN CALIFORNIA-OFFSHORE-SURVEY OPERATIONS

[ATLAS-SURVEY OPERATIONS.pdf](#)

see enclosure below.

LNM: 15/24

SOUTHERN CALIFORNIA-PORTS OF LOS ANGELES/LONG BEACH-LA/LB HARBOR-BRIDGE

[V_Thomas_Platform_Lighting1.pdf](#)

See link above for platform lighting for Vincent Thomas Bridge.

LNM: 28/19

THE LOCAL NOTICE TO MARINERS IS AVAILABLE ON THE WORLD WIDE WEB AT [HTTPS://WWW.NAVCEN.USCG.GOV](https://www.navcen.uscg.gov)

W.J. George, CDR
U.S. Coast Guard
Chief Waterways Management Branch

**U.S. COAST GUARD
REPORT OF DELAY AT DRAWBRIDGE
PER 33 CFR 117.5**

BRIDGE NAME: _____ DATE: _____

MILE : _____ WATERWAY: _____

1. Name/ Type of Vessel: _____ Direction of Travel : _____

2. Vessel Owner (Name): _____

(Address): _____

3. Name of Pilot (if applicable): _____

(Address): _____

4. Time vessel signaled for bridge opening: _____

5. Location of vessel when signal was given: _____

6. Time and location of vessel when delay began: _____

7. Method of signal for bridge opening: () Radio () Sound () Visual.

(If sound or visual signal was used, specify: _____)

8. Time bridge operator acknowledged signal: _____

9. Method of bridge operator acknowledgement: () Radio () Sound () Visual

(If sound or visual signal was used, specify: _____)

10. Did bridge operator acknowledgement indicate the bridge,

() Could be opened immediately?

() Could not be opened immediately?

11. If land traffic crossed the bridge:

Time land traffic started across the bridge _____

Time land traffic stopped crossing the bridge _____

Did land traffic stop on the bridge? _____

Duration land traffic stopped on the bridge _____

12. Time drawbridge opened for navigation _____

13. Additional comments:

I certify the above information is true to the best of my knowledge and understand this statement may be used by the U.S. Coast Guard in levying fines against the bridge owner.

Signature _____

Telephone _____

Mariners may complete and return to:

Commander (dpw)

Fax: (510) 437-5836

Email: Carl.T.Hausner@uscg.mil

Eleventh Coast Guard District

Coast Guard Island, Building 50-2

Alameda, CA 94501-5100

Attn: Bridge Office

Questions? Please contact: Carl Hausner, Bridge Administrator, Eleventh Coast Guard District

Office: (510) 437-3516

Cell: (510) 219-4366

Mariners are reminded not to require bridge openings for appurtenances nonessential to navigation, per 33 CFR 117.11

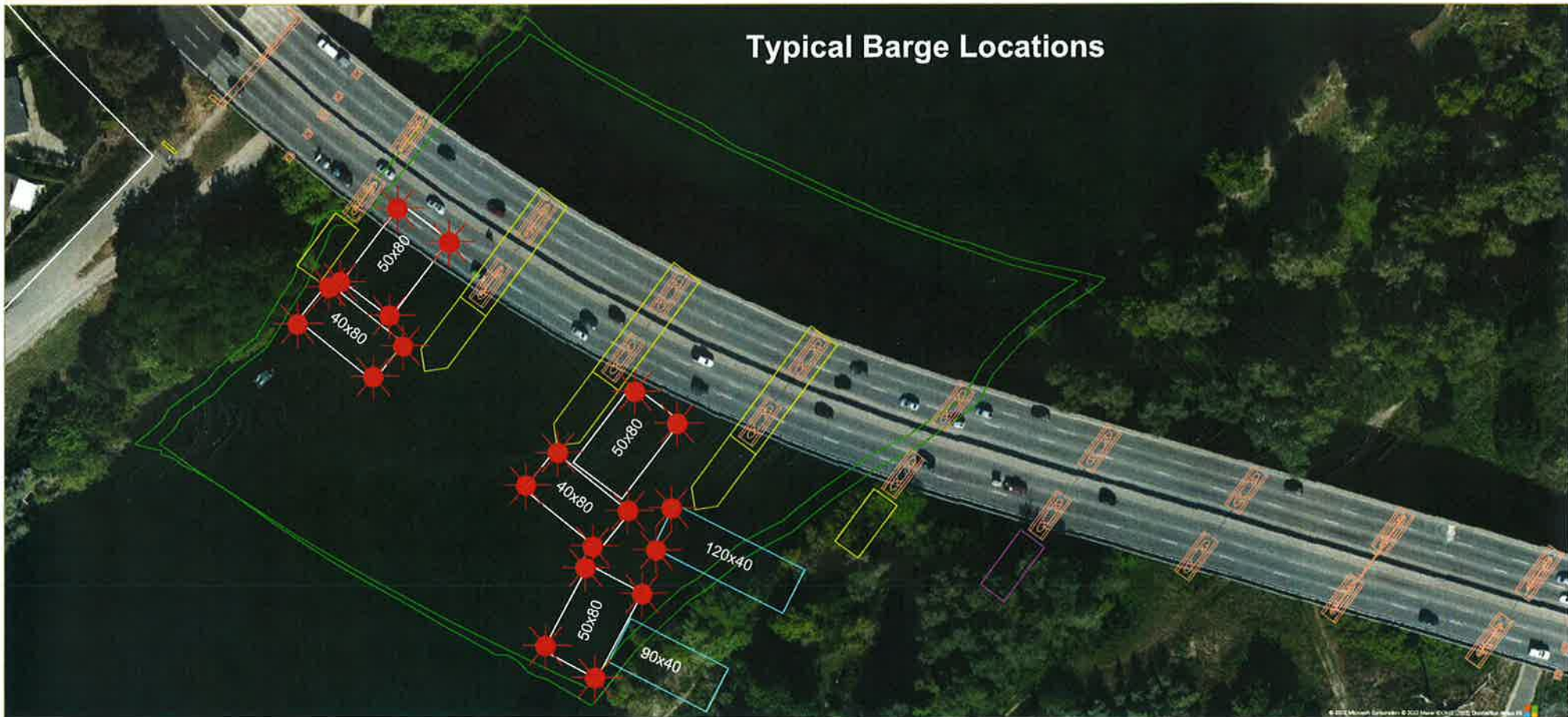
Pier Protection Replacement Project
BNSF Rail Bridge
Mile 10.4, Old River
March 25, 2024 to September 27, 2024



Typical barge location. The working barge will be lighted at night with all-round red lights. For the safety of navigation, the barge can be moved, 24-hours a day, if at least 1-hour notice is given to the contractor, Pacific Pile & Marine.

Rehabilitation and Modification Project
Capital City (CA Route 51) Bridge, Mile 4.0, American River

Typical Barge Location and Typical Barge Lighting



Each corner of each barge is lighted at night with steady burning all-round red light, visible at 2,000 by approaching vessels. All vessels transiting the project area should use extreme caution. Turbidity curtains will be placed at different locations during the project. The next four diagrams show the proposed location of the curtains.



Capital City Bridge, Mile 4.0, American River
Turbidity Curtain Plan
Phase 1 Installation



Capital City Bridge, Mile 4.0, American River

Turbidity Curtain Plan
Phase 2 Installation



Capital City Bridge, Mile 4.0, American River

Turbidity Curtain Plan
Phase 3 Installation



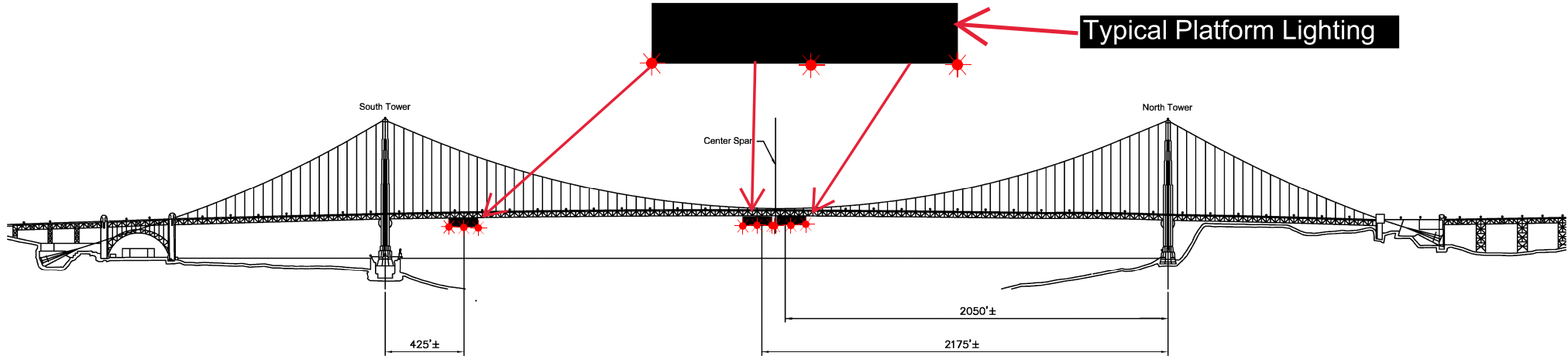
Capital City Bridge, Mile 4.0, American River

Turbidity Curtain Plan
Phase 4 Installation

Temporary Access Platforms

Golden Gate Bridge, mile 2.5, San Francisco Bay

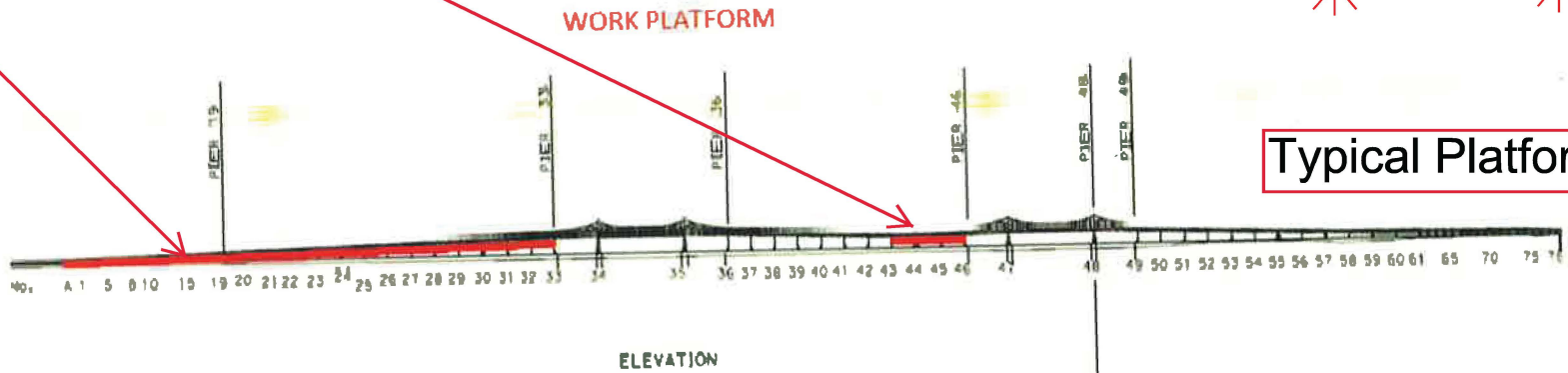
Revised 20 Feb 24



Three 54 ft wide temporary platforms are installed in the main span below low steel of the bridge, in relation to centerline of the span; two south of the north tower and one north of the south tower, reducing vertical clearance by no more than 14 feet. The upstream and downstream lower edges of the temporary platforms will be lighted at night with steady burning red lights visible at 2,000 yards by approaching vessels.

Painting and Structural Repairs Project
Richmond-San Rafael Bridge
Mile 13.0, San Francisco Bay

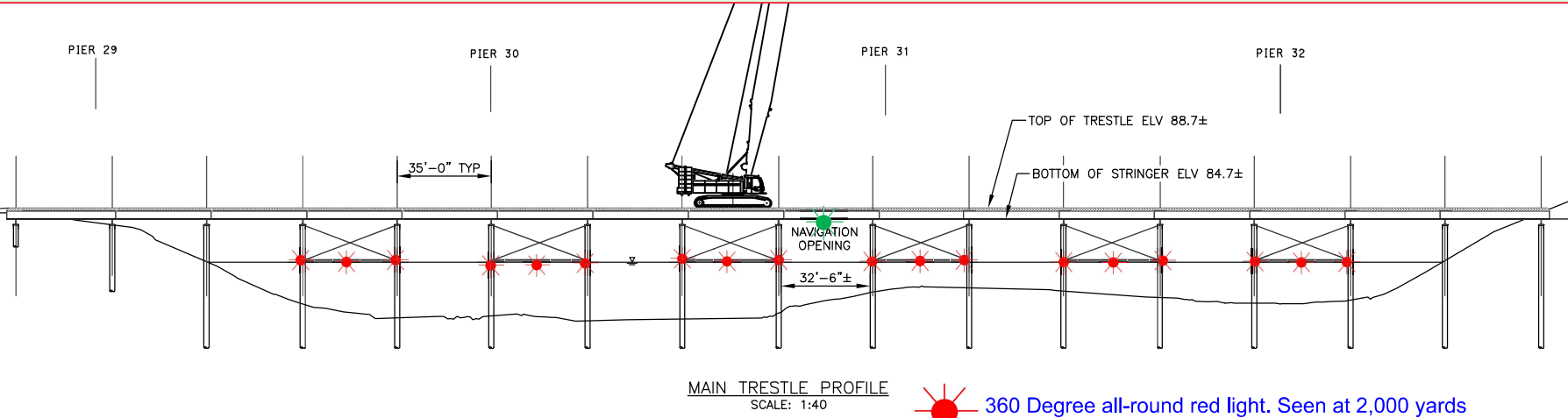
Temporary Underdeck Platforms




Typical Platform Lighting

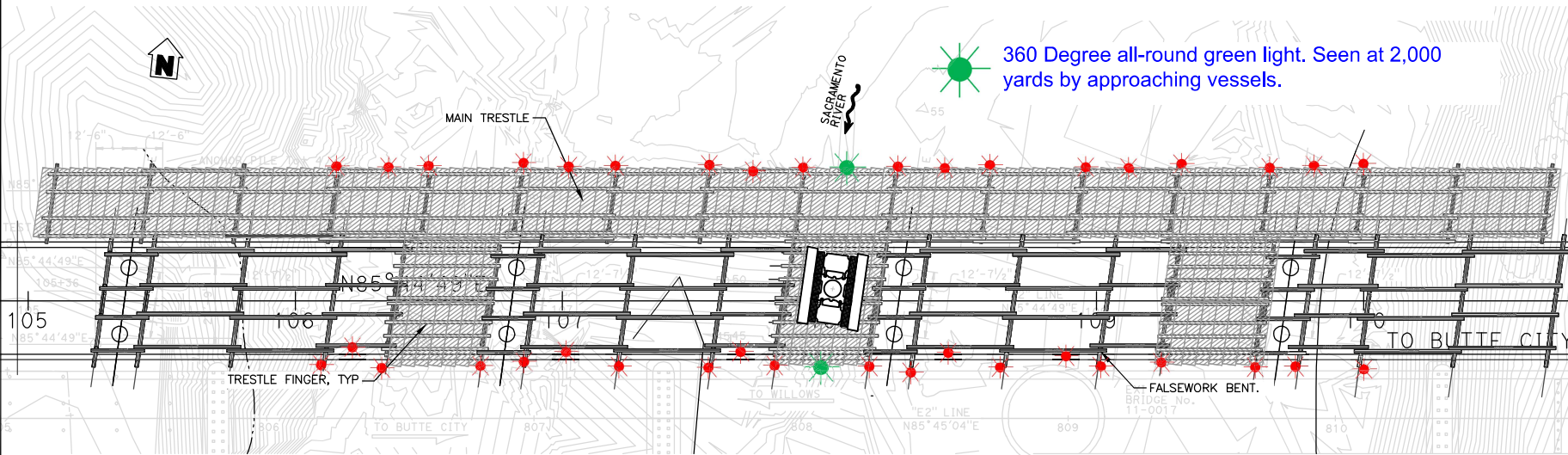
The upstream and downstream lower edges of each temporary platform in each span are lighted at night with steady burning red lights to be seen at 2,000 yards by approaching vessels. Each platform reduces vertical clearance by no more than 3 feet.

Butte City Bridge Replacement Project Sacramento River

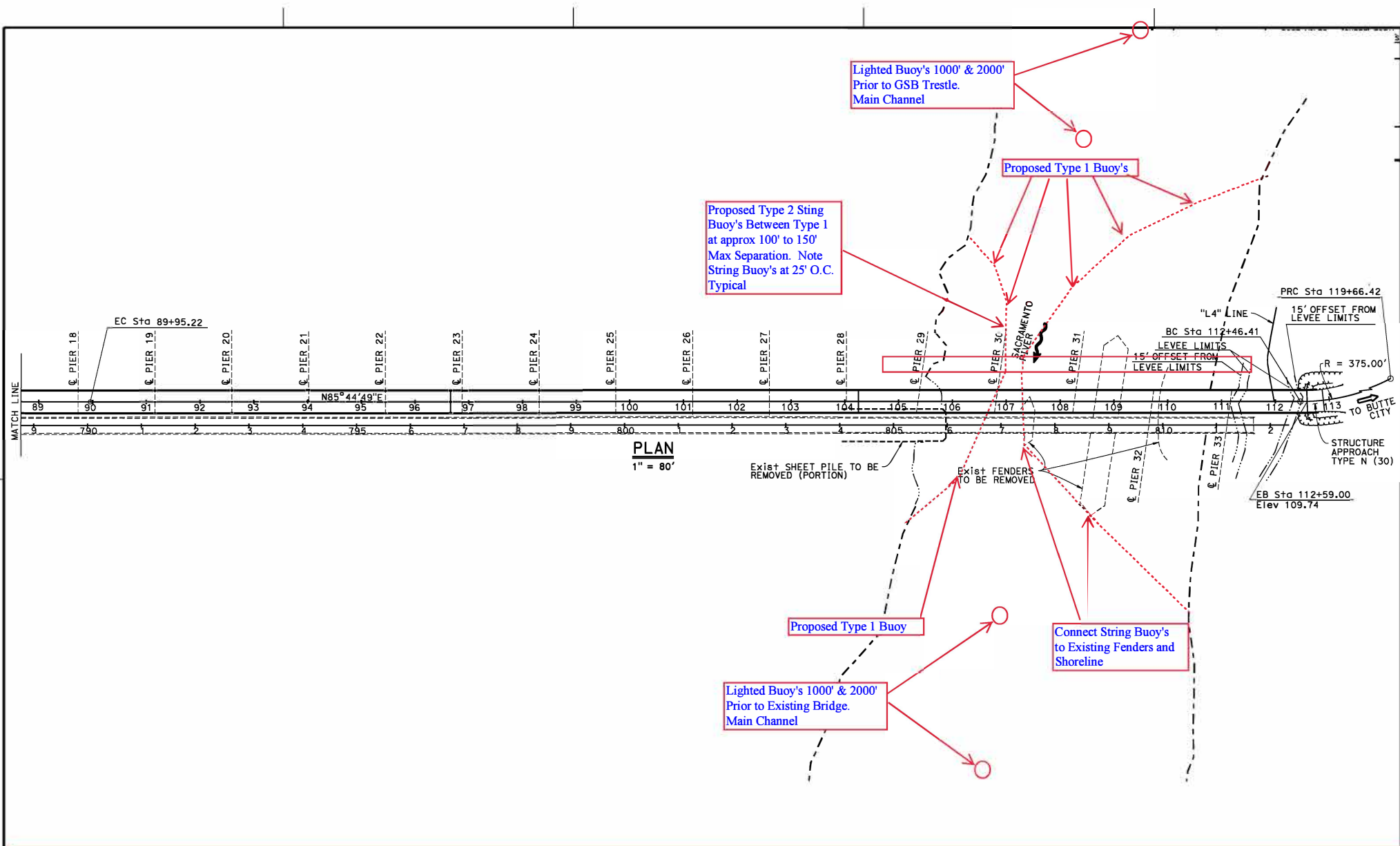


 360 Degree all-round red light. Seen at 2,000 yards by approaching vessels.

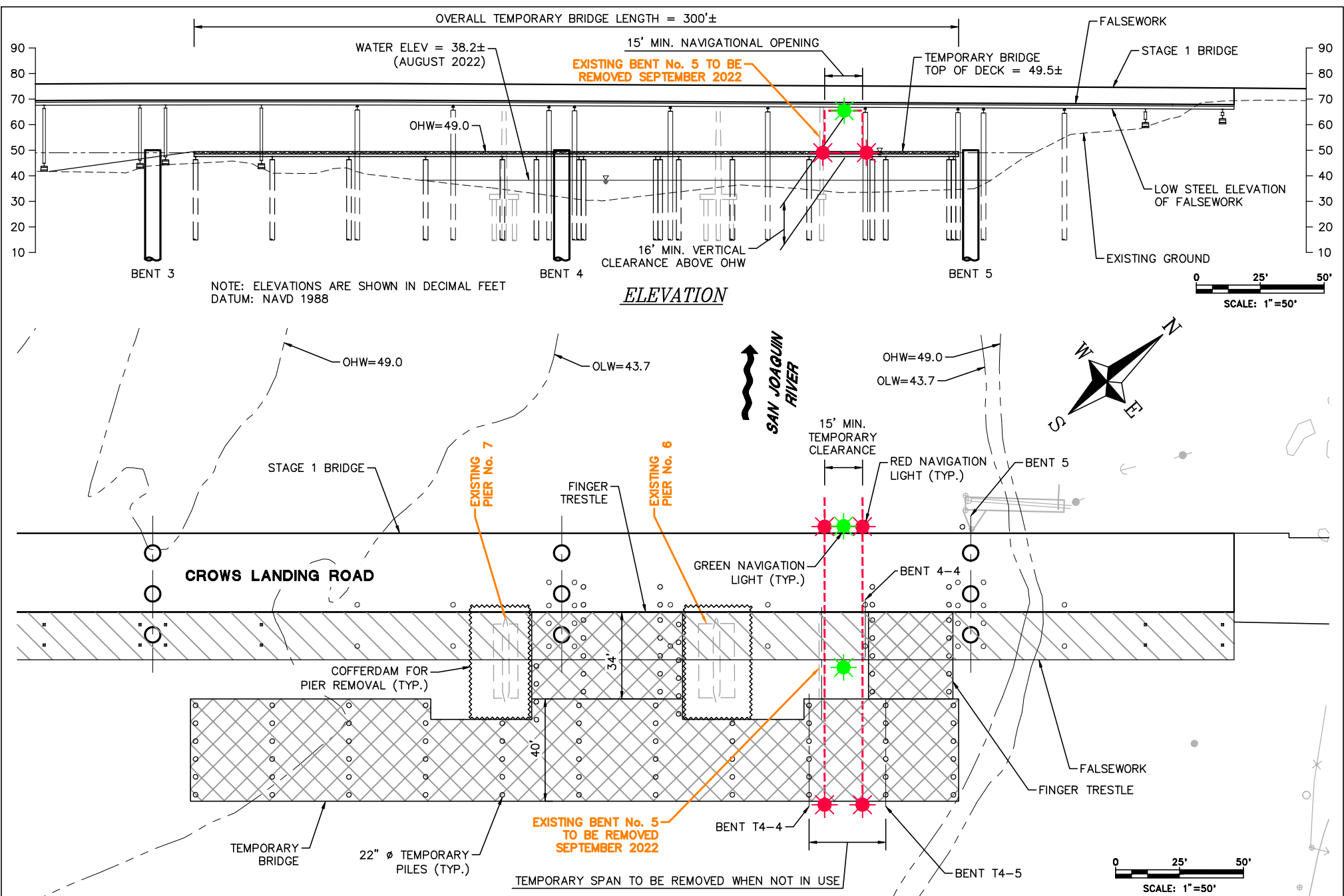
 360 Degree all-round green light. Seen at 2,000 yards by approaching vessels.



The upriver and downriver ends of the trestle piles and crossbeams are lighted at night with steady burning red lights. The upriver and downriver low steel of the temporary navigation span, in the center of the river, is lighted at night with steady burning green lights, which identifies the center of the temporary navigation span.

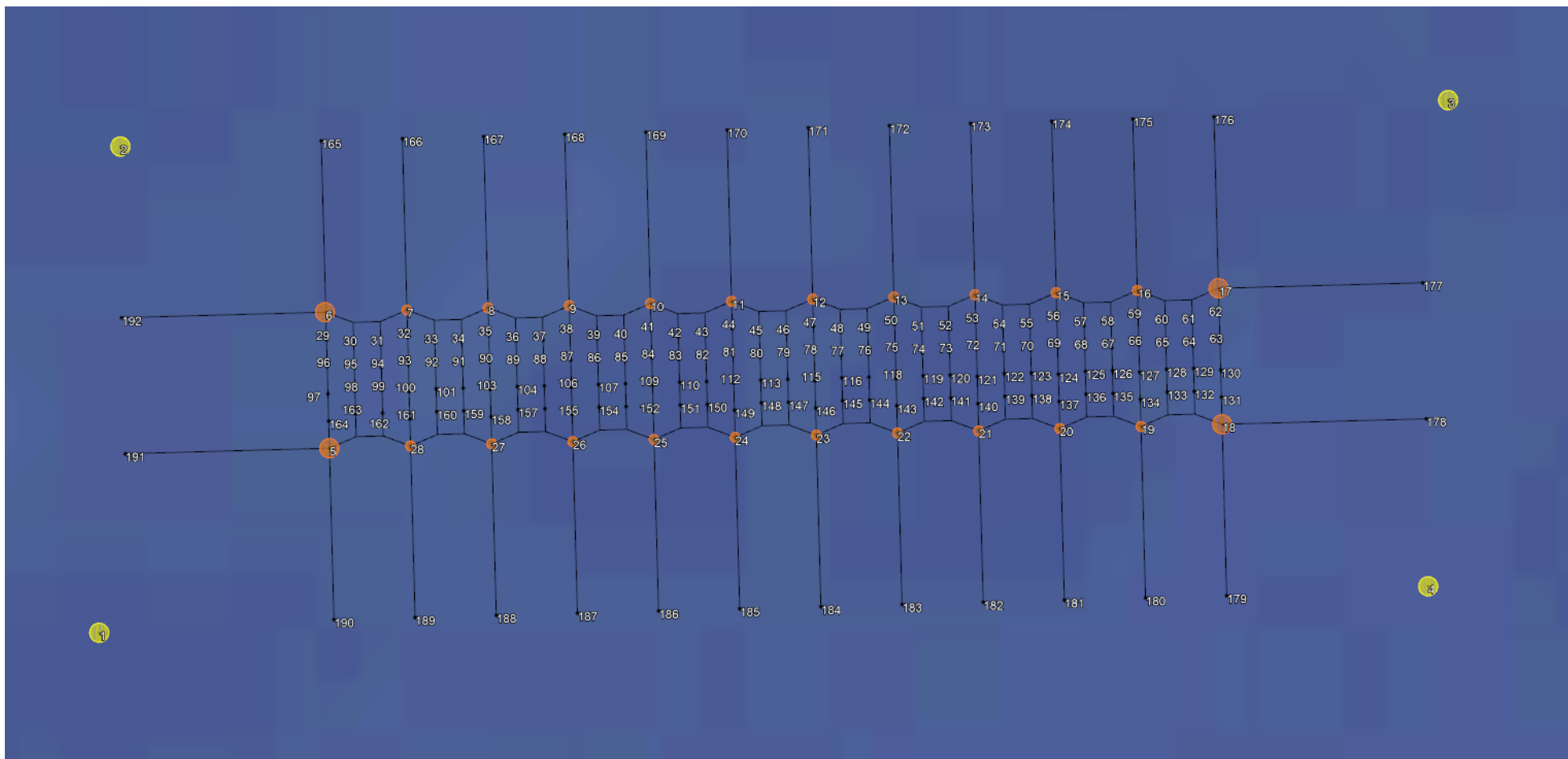


**Butte City Bridge Replacement Project, mile 169.7, Sacramento River
Proposed Buoy Line During Construction**



Temporary Navigation Lighting-Crows Landing Bridge Replacement Project - San Joaquin River

The temporary bridge, the replacement bridge and existing bridge will be lighted at night with two red lights marking the temporary navigation channel. The temporary falsework will be lighted, upriver and downriver, with green lights marking the center of the temporary navigation channel. During construction the temporary navigation channel will provide a horizontal clearance of 15 feet and a vertical clearance at Ordinary High Water of 16 feet.



4 ALBERT EMBANKMENT
LONDON SE1 7SR
Telephone: +44 (0)20 7735 7611 Fax: +44 (0)20 7587 3210

COLREG.2/Circ.78
28 November 2022

TRAFFIC SEPARATION SCHEMES AND ASSOCIATED MEASURES

1 The Maritime Safety Committee, at its 106th session (2 to 11 November 2022), having considered the recommendation made by the Sub-Committee on Navigation, Communications and Search and Rescue at its ninth session (21 to 30 June 2022), and in accordance with the *Procedure for the adoption and amendment of traffic separation schemes, routing measures other than traffic separation schemes, including designation and substitution of archipelagic sea lanes, and ship reporting systems* (resolution A.858(20)), adopted traffic separation schemes and associated measures, as follows:

- .1 amended traffic separation schemes and associated measures *Approaches to the Chornomorsk, Odesa and Pivdennyi ports*, which replace the existing traffic separation schemes *Between the ports of Odessa and Ilichevsk* and *In the approaches to the ports of Odessa and Ilichevsk* (COLREG.2/Circ.14, paragraphs 1.1.2 and 1.1.3); and
- .2 amendments to the traffic separation scheme *In the Santa Barbara Channel* (COLREG.2/Circ.64, annex 6),

as set out in annexes 1 and 2, respectively.

2 Accordingly, the aforementioned traffic separation schemes and associated measures will be implemented at 0000 hours UTC on 1 June 2023.

ANNEX 2

**AMENDMENTS TO THE TRAFFIC SEPARATION SCHEME
"IN THE SANTA BARBARA CHANNEL"**

In the Santa Barbara Channel

(Reference charts: United States 18700, 2013 edition; 18720, 2020 edition; and 18721, 2009 edition.

Note: These charts are based on North American 1983 datum)

Part II

Between Point Conception and Point Arguello

The description of the traffic separation scheme in part II "Between Point Conception and Point Arguello" is replaced by the following:

(a) A separation zone is bounded by a line connecting the following geographical positions:

(1) 34°20'.84 N, 120°30'.28 W (13) 34°29'.15 N, 121°06'.94 W
(6) 34°19'.88 N, 120°30'.59 W (14) 34°28'.19 N, 121°07'.26 W

(b) A traffic lane for westbound traffic is established between the separation zone and a line connecting the following geographical positions:

(7) 34°21'.80 N, 120°29'.96 W (15) 34°30'.11 N, 121°06'.63 W

(c) A traffic lane for eastbound traffic is established between the separation zone and a line connecting the following geographical positions:

(12) 34°18'.92 N, 120°30'.91 W (16) 34°27'.23 N, 121°07'.57 W

4 ALBERT EMBANKMENT
LONDON SE1 7SR
Telephone: +44 (0)20 7735 7611 Fax: +44 (0)20 7587 3210

SN.1/Circ.342
28 November 2022

ROUTING MEASURES OTHER THAN TRAFFIC SEPARATION SCHEMES

1 The Maritime Safety Committee, at its 106th session (2 to 11 November 2022), having considered the recommendation made by the Sub-Committee on Navigation, Communications and Search and Rescue at its ninth session (21 to 30 June 2022), and in accordance with the *Procedure for the adoption and amendment of traffic separation schemes, routing measures other than traffic separation schemes, including designation and substitution of archipelagic sea lanes, and ship reporting systems* (resolution A.858(20)), adopted routing measures other than traffic separation schemes, as follows:

- .1 recommended route *Off the coast of Shio-no-Misaki*;
- .2 amendments to areas to be avoided *Off the California coast* (resolution A.711(17));
- .3 no anchoring area *In the southern portion of Pulley Ridge*; and
- .4 recommendation on navigation for containerships in the traffic separation schemes *Off Vlieland, Vlieland North and Vlieland Junction, Terschelling-German Bight, Off Friesland and German Bight western approach*,

as set out in annexes 1 to 4, respectively.

2 Accordingly, the aforementioned routing measures will be implemented at 0000 hours UTC on 1 June 2023.

ANNEX 2

AMENDMENTS TO AREAS TO BE AVOIDED "OFF THE CALIFORNIA COAST"

Off the California coast

(Reference charts: United States 18700, 2013 edition; 18720, 2020 edition; 18721, 2009 edition.

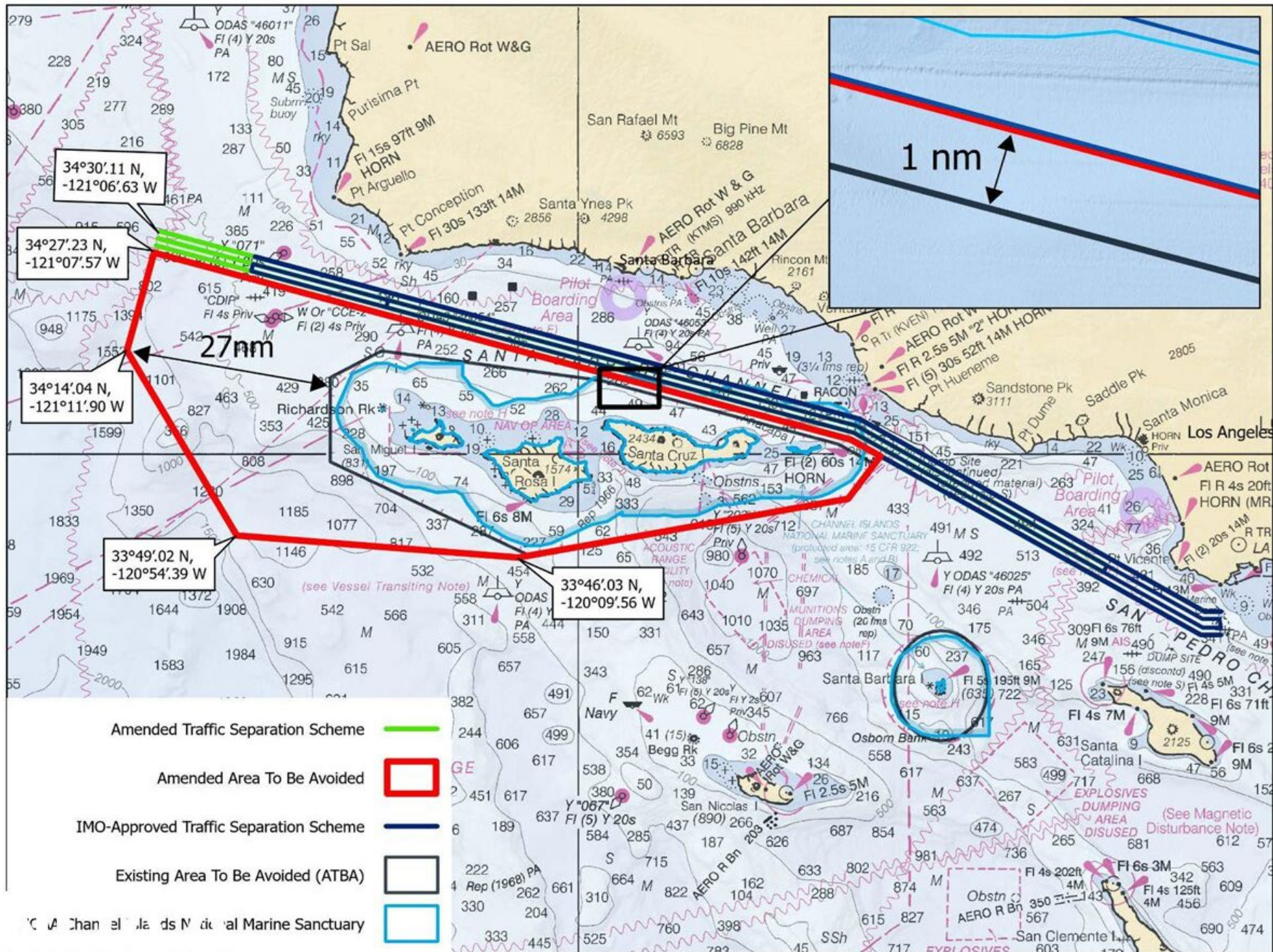
Note: These charts are based on North American 1983 datum.)

Description of the area to be avoided

- (a) **In the region of San Miguel, Santa Rosa, Santa Cruz and Anacapa Islands off the coast of southern California**

The existing area to be avoided is replaced by the area bounded by a line connecting the following geographical positions:

- (1) 34°27'.23 N, 121°07'.57 W
- (2) 34°02'.01 N, 119°16'.56 W
- (3) 33°59'.77 N, 119°11'.85 W
- (4) 33°54'.01 N, 119°16'.87 W
- (5) 33°46'.03 N, 120°09'.56 W
- (6) 33°49'.02 N, 120°54'.39 W
- (7) 34°14'.04 N, 121°11'.90 W





To: All Mariners

April 1, 2024

The National Oceanic and Atmospheric Administration (NOAA), with support from the United States Coast Guard (USCG) and Environmental Protection Agency (EPA) is issuing a voluntary 10-knot Vessel Speed Reduction (VSR) request that goes into effect May 1 off the coasts of San Francisco, Monterey, and southern California; please see the attached charts. Large ships traveling at 10 knots or less give whales more time to move to avoid a strike, reduce the lethality of a strike should one occur, and generate less harmful ocean noise and fewer air emissions. Thus, the goals of these voluntary VSR zones are to reduce the risk of fatal ship strikes to endangered and threatened blue, fin, and humpback whales, reduce ocean noise, and protect public health along the California coast. These whale species are protected under the Federal Endangered Species Act (16 U.S.C. 1538 et seq.), the Marine Mammal Protection Act (16 U.S.C. 1361 et seq.), and the National Marine Sanctuaries Act (16 U.S.C. 1431 et seq.). Any unauthorized take of whales, even if unintentional, by vessels transiting in U.S. waters violates federal statutes.

The voluntary VSR requests will be in effect May 1 to December 31, 2024 for the San Francisco and Monterey Bay Region zones and May 1 to December 15, 2024 for the southern California zone, as shown in the attached charts. The VSR period is being extended by two weeks in the San Francisco and Monterey Bay Region zones due to concerns about the extended presence of protected humpback whales in recent years off Central California. NOAA, USCG, and EPA request that all vessels 300 gross tons (GT) or larger reduce speeds to 10 knots when transiting within the designated VSR zones and prioritize use of the western traffic lane of the San Francisco TSS when traveling in the San Francisco Offshore TSS. Vessels may deviate from the speed and routing recommendations whenever necessary to maintain safe maneuvering.

We request your cooperation with the voluntary VSR requests to protect the health of coastal communities and whales that annually migrate to and through these zones to feed. All transits by vessels 300 GT or larger are analyzed by NOAA via Automatic Information System (AIS) data provided by USCG to assess the cooperation of your company along with industry as a whole.

NOAA, USCG, and EPA are committed to the long-term protection of nationally significant marine resources and public health by enhancing marine safety and environmental awareness in the maritime community. If you have questions, please contact Sean Hastings, 805-705-1790, sean.hastings@noaa.gov.

NOAA, USCG, and EPA commend your commitment to protecting endangered and threatened whales and protecting public health by cooperation with the 10 knot VSR requests and working towards a goal of 100% cooperation in 2024.

Handwritten signature of William J. Douros in blue ink.

William J. Douros, Regional Director
NOAA Office of National Marine Sanctuaries
West Coast Region

Handwritten signature of Jennifer Quan in blue ink.

Jennifer Quan, Regional Administrator
NOAA National Marine Fisheries Service
West Coast Region

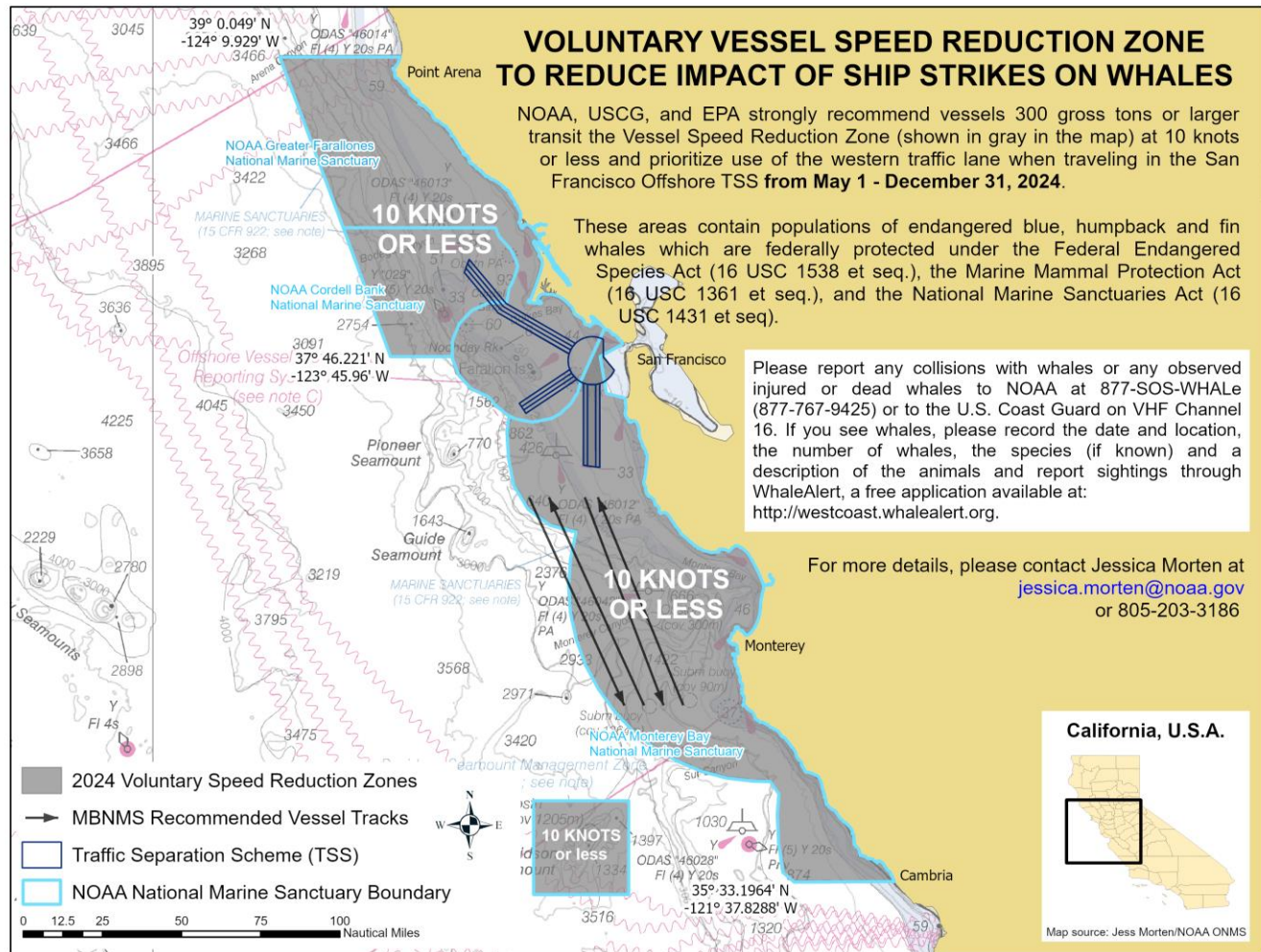
Handwritten signature of Andrew M. Sugimoto in blue ink.

Andrew M. Sugimoto, Rear Admiral
U.S. Coast Guard
District Eleven

Handwritten signature of Martha Guzman in blue ink.

Martha Guzman, Regional Administrator
Environmental Protection Agency
Region 9

2024 Voluntary Vessel Speed Reduction Zones – San Francisco and Monterey Bay Region

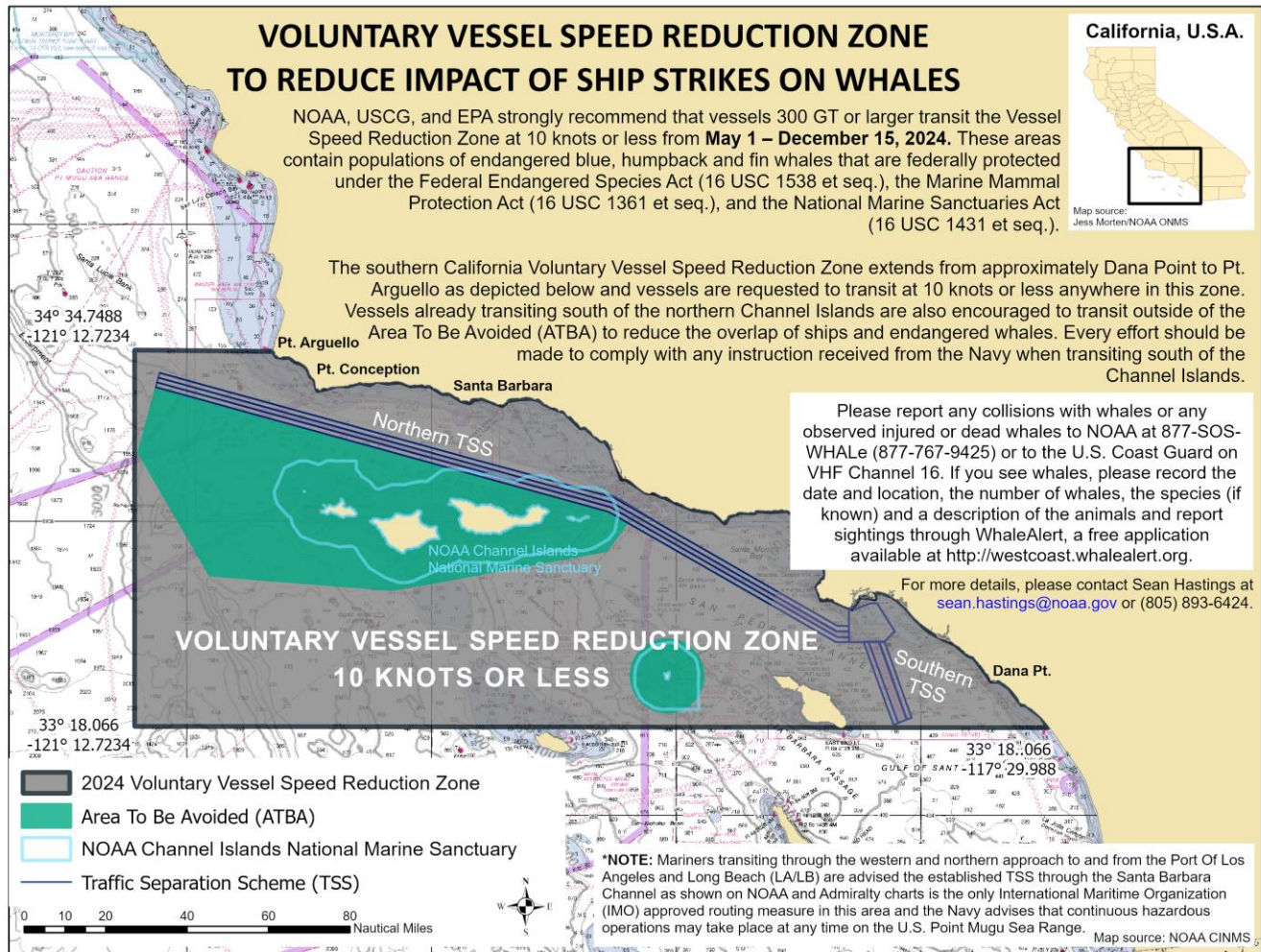


NOAA Chart 501

This map is not to be used for navigational purposes

16 FEBRUARY 2024

2024 Voluntary Vessel Speed Reduction Zone – Southern California Region



California, U.S.A.



Map source: Jess Morten/NOAA ONMS

NOAA Chart 18022

Chart not for navigational purposes.

18 MARCH 2024

LOCAL NOTICE TO MARINERS

JUNO SUBSEA FIBER OPTIC CABLE

Fiber Optic Cable Laying Operations in the California EEZ
March 19 – June 1, 2024
By the *C/S Rene Descartes*

Submitted to: U.S. Coast Guard, Sector LA-LB (COTP)
Via email: D11-DG-SectorLALB-WWM@uscg.mil

Subsea Fiber Optic Cable Landing Activity

The *C/S René Descartes*, a cable-laying ship, will be performing cable installation operations for the JUNO Cable System from the Grover Beach (CA) to Japan. The cable route will pass through the US Exclusive Economic Zone (EEZ). The cable ship will perform the following functions in the order listed:

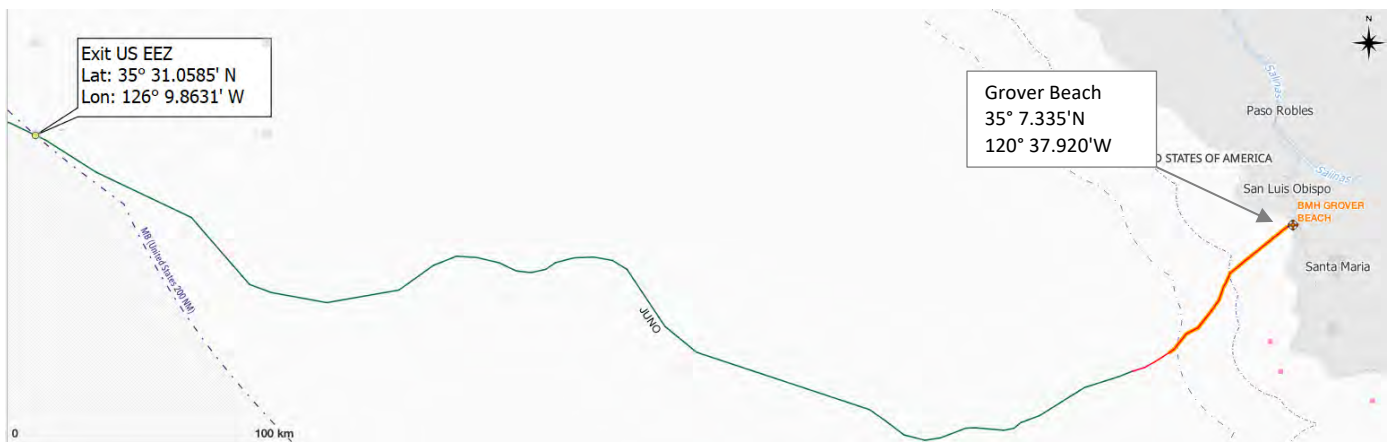
1. clear the seabed from debris using a grapnel,
2. plough bury the cable on the continental shelf,
3. lay the cable on the seafloor from the continental shelf to the EEZ boundary,
4. return to the continental shelf to improve the cable burial using a ROV.

All mariners are requested to remain aware of the cable-laying operations and maintain a minimum one (1) nautical mile (NM) clearance of the cable ship.

Start/end dates: March 19th, 2024, to June 1st, 2024.

(Above Start/end dates will be changed slightly subject to the actual cable laying progress.)

General Location of Cable Lay Activities: The cable alignment will cross NOAA Navigational Charts: 18700 (South half) and 18720 (NE corner) and is shown on the following figure. A detailed table of the coordinates along the alignment is included in the section below.



JUNO Planned Cable Route

Cable Ship Vessel Details



| Vessel Information | |
|----------------------------|---|
| Name | C/S René Descartes |
| Flag | FRANCE |
| Year Built | 2002 |
| IMO | 9248100 |
| Call Sign | FNWZ |
| Dimensions | |
| Length | 144.50 m |
| Beam | 22 m |
| Draft | 7.40 m |
| Gross Tonnage | 11,700 ton |
| Communication | |
| Bridge Contact | +870- 773 164 657, +870- 773 188 333 |
| Information | Email: passe.descartes@orange.com |
| Immediate Point of Contact | |
| Contact Person, Position | Jean-Sebastien SERNA, Master until end of April Guillaume LE SAUX, Master in May |
| Company Name | Orange Marine |
| Address | 21, rue Jasmin, 75016 PARIS, FRANCE |
| Email | cdt.descartes@orange.com |
| Telephone | +33 9 689 000 17 |

The cable route coordinates for the segments passing through the US EEZ are provided on the following page.

JUNO CABLE MARINE ROUTE COORDINATES

All mariners are requested to remain aware of the cable-laying operations and maintain 1 NM clearance of the cable ship.

| Pos | Latitude | | | Longitude | | |
|--------------|----------|--------|---|-----------|--------|---|
| Grover Beach | | | | | | |
| 1 | 35 | 7.335 | N | 120 | 37.920 | W |
| 2 | 35 | 7.335 | N | 120 | 37.920 | W |
| 3 | 35 | 7.037 | N | 120 | 38.784 | W |
| 4 | 35 | 6.989 | N | 120 | 38.924 | W |
| 5 | 35 | 6.877 | N | 120 | 39.253 | W |
| 6 | 35 | 6.804 | N | 120 | 39.465 | W |
| 7 | 35 | 5.872 | N | 120 | 40.614 | W |
| 8 | 34 | 58.839 | N | 120 | 49.313 | W |
| 9 | 34 | 57.707 | N | 120 | 50.755 | W |
| 10 | 34 | 56.078 | N | 120 | 52.681 | W |
| 11 | 34 | 54.672 | N | 120 | 54.412 | W |
| 12 | 34 | 53.398 | N | 120 | 54.938 | W |
| 13 | 34 | 51.986 | N | 120 | 55.562 | W |
| 14 | 34 | 51.195 | N | 120 | 56.072 | W |
| 15 | 34 | 47.588 | N | 120 | 57.320 | W |
| 16 | 34 | 46.829 | N | 120 | 57.826 | W |
| 17 | 34 | 44.841 | N | 120 | 59.262 | W |
| 18 | 34 | 41.840 | N | 121 | 1.619 | W |
| 19 | 34 | 40.282 | N | 121 | 2.846 | W |
| 20 | 34 | 39.576 | N | 121 | 4.199 | W |
| 21 | 34 | 39.322 | N | 121 | 4.685 | W |
| 22 | 34 | 39.039 | N | 121 | 5.227 | W |
| 23 | 34 | 38.647 | N | 121 | 5.977 | W |
| 24 | 34 | 34.539 | N | 121 | 9.255 | W |
| 25 | 34 | 33.823 | N | 121 | 10.314 | W |
| 26 | 34 | 31.331 | N | 121 | 14.180 | W |
| 27 | 34 | 29.774 | N | 121 | 17.003 | W |

| Pos | Latitude | | | Longitude | | |
|-----|----------|--------|---|-----------|--------|---|
| 28 | 34 | 28.918 | N | 121 | 19.760 | W |
| 29 | 34 | 28.752 | N | 121 | 20.295 | W |
| 30 | 34 | 27.345 | N | 121 | 23.869 | W |
| 31 | 34 | 24.681 | N | 121 | 32.287 | W |
| 32 | 34 | 24.541 | N | 121 | 32.789 | W |
| 33 | 34 | 23.565 | N | 121 | 34.350 | W |
| 34 | 34 | 23.179 | N | 121 | 34.967 | W |
| 35 | 34 | 22.693 | N | 121 | 35.746 | W |
| 36 | 34 | 17.101 | N | 121 | 44.689 | W |
| 37 | 34 | 15.861 | N | 121 | 48.032 | W |
| 38 | 34 | 15.251 | N | 121 | 49.674 | W |
| 39 | 34 | 14.582 | N | 121 | 50.489 | W |
| 40 | 34 | 13.739 | N | 121 | 51.505 | W |
| 41 | 34 | 13.236 | N | 121 | 54.122 | W |
| 42 | 34 | 13.864 | N | 122 | 1.602 | W |
| 43 | 34 | 13.842 | N | 122 | 2.441 | W |
| 44 | 34 | 13.796 | N | 122 | 4.171 | W |
| 45 | 34 | 11.240 | N | 122 | 10.811 | W |
| 46 | 34 | 10.891 | N | 122 | 13.048 | W |
| 47 | 34 | 10.592 | N | 122 | 14.960 | W |
| 48 | 34 | 11.294 | N | 122 | 17.771 | W |
| 49 | 34 | 11.980 | N | 122 | 20.517 | W |
| 50 | 34 | 14.832 | N | 122 | 24.245 | W |
| 51 | 34 | 15.603 | N | 122 | 25.253 | W |
| 52 | 34 | 18.682 | N | 122 | 29.636 | W |
| 53 | 34 | 28.667 | N | 122 | 59.792 | W |
| 54 | 34 | 33.791 | N | 123 | 15.265 | W |
| 55 | 34 | 37.745 | N | 123 | 20.108 | W |
| 56 | 34 | 40.636 | N | 123 | 23.651 | W |
| 57 | 34 | 43.035 | N | 123 | 25.249 | W |
| 58 | 34 | 48.860 | N | 123 | 29.130 | W |
| 59 | 34 | 54.548 | N | 123 | 32.925 | W |

| Pos | Latitude | | | Longitude | | |
|--------|----------|--------|---|-----------|--------|---|
| 60 | 34 | 55.606 | N | 123 | 33.631 | W |
| 61 | 34 | 55.686 | N | 123 | 33.684 | W |
| 62 | 34 | 58.027 | N | 123 | 37.527 | W |
| 63 | 34 | 58.911 | N | 123 | 42.443 | W |
| 64 | 34 | 58.718 | N | 123 | 47.607 | W |
| 65 | 34 | 58.175 | N | 123 | 49.693 | W |
| 66 | 34 | 57.416 | N | 123 | 52.611 | W |
| 67 | 34 | 56.089 | N | 123 | 54.526 | W |
| 68 | 34 | 55.671 | N | 123 | 55.130 | W |
| 69 | 34 | 54.829 | N | 123 | 58.971 | W |
| 70 | 34 | 55.254 | N | 124 | 2.883 | W |
| 71 | 34 | 57.090 | N | 124 | 6.753 | W |
| 72 | 34 | 57.395 | N | 124 | 7.397 | W |
| 73 | 34 | 58.794 | N | 124 | 13.346 | W |
| 74 | 34 | 59.142 | N | 124 | 18.713 | W |
| 75 | 34 | 57.632 | N | 124 | 22.462 | W |
| 76 | 34 | 56.776 | N | 124 | 24.700 | W |
| 77 | 34 | 51.983 | N | 124 | 31.417 | W |
| 78 | 34 | 50.214 | N | 124 | 33.871 | W |
| 79 | 34 | 47.363 | N | 124 | 50.242 | W |
| 80 | 34 | 46.899 | N | 124 | 52.902 | W |
| 81 | 34 | 49.567 | N | 125 | 7.605 | W |
| 82 | 34 | 51.661 | N | 125 | 13.291 | W |
| 83 | 34 | 53.957 | N | 125 | 15.325 | W |
| 84 | 35 | 2.728 | N | 125 | 22.954 | W |
| 85 | 35 | 7.609 | N | 125 | 27.172 | W |
| 86 | 35 | 9.348 | N | 125 | 28.676 | W |
| 87 | 35 | 21.287 | N | 125 | 53.825 | W |
| 88 | 35 | 29.527 | N | 126 | 6.798 | W |
| 89 | 35 | 29.870 | N | 126 | 7.390 | W |
| 90 | 35 | 31.059 | N | 126 | 9.863 | W |
| US EEZ | | | | | | |

JUNO CABLE MARINE ROUTE COORDINATES



M/V Island Pride – Call Sign: LAGN8



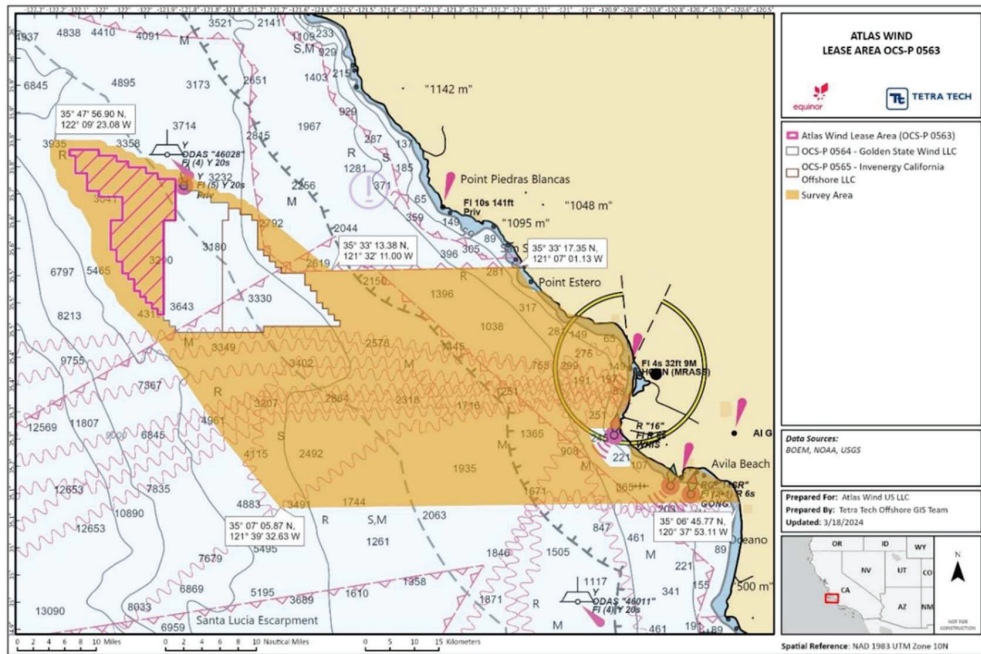
R/V Taku – Call Sign: TAKU

RADIO FREQUENCY VESSELS CAN BE CONTACTED ON : VHF channel 16

PASSING ARRANGEMENTS:

During the survey the M/V Island Pride and R/V Taku will be deploying subsurface survey equipment along the route corridor and in the Lease Area (OCS-P 0563) and will be restricted in their ability to maneuver. Approaching vessels are requested to pass at a safe speed and distance.

Chart of Survey Area within both state and federal waters with latitude and longitude of approximate Survey Area boundaries



SURVEY COORDINATES OF LEASE AREA AND SURVEY AREA

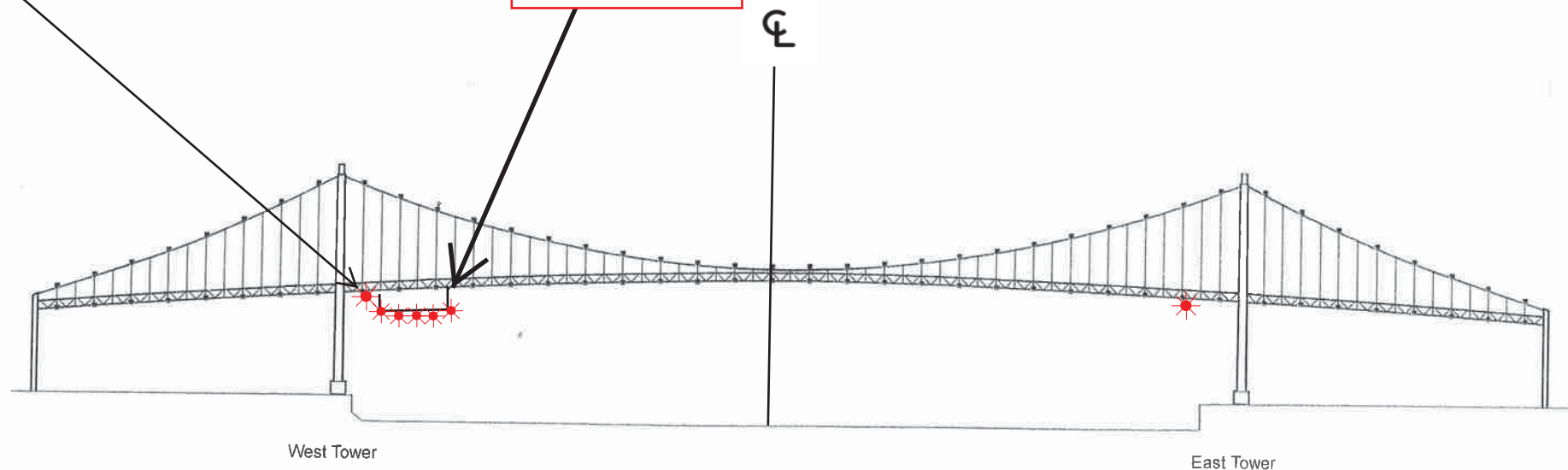
| SURVEY COORDINATES OF THE LEASE AREA | |
|---|------------------|
| Latitude | Longitude |
| 35.7248 | -121.8855 |
| 35.6491 | -121.8865 |
| 35.6494 | -121.9130 |
| 35.4793 | -121.9154 |
| 35.4764 | -121.9286 |
| 35.5963 | -122.0330 |
| 35.6504 | -122.0323 |
| 35.6502 | -122.0058 |
| 35.6934 | -122.0053 |
| 35.6939 | -122.0583 |
| 35.7049 | -122.0847 |
| 35.7375 | -122.1109 |
| 35.7701 | -122.1238 |
| 35.7809 | -122.1237 |
| 35.7804 | -122.0573 |

| SURVEY COORDINATES OF THE SURVEY AREA | |
|--|------------------|
| Latitude | Longitude |
| 35.5548 | -121.117 |
| 35.4484 | -120.906 |
| 35.1127 | -120.631 |
| 35.1182 | -121.659 |
| 35.4263 | -121.93 |
| 35.6353 | -122.077 |
| 35.7991 | -122.156 |
| 35.743 | -121.905 |
| 35.6762 | -121.714 |
| 35.5537 | -121.536 |

Vincent Thomas Highway Bridge
Mile 3.0
Los Angeles/Long Beach Harbor
Painting Project

West Channel Margin
Light

Below Low Steel
Platform. 5' 4"
reduction in
vertical clearance



A 180 foot long under deck temporary platform will reduce vertical clearance by 5' 4". Each corner and every 50 feet along the the upstream and downstream side of the platform will lighted at night with steady burning red lights visible at 2000 yards by approaching vessels. In a duration of 1-year the platform will progress from the western channel margin light to 250' west of the centerline of the bridge.